

Product datasheet for **RG236835**

SHF (NM_001301171) Human Tagged ORF Clone

Product data:

Product Type: Expression Plasmids
Product Name: SHF (NM_001301171) Human Tagged ORF Clone
Tag: TurboGFP
Symbol: SHF
Mammalian Cell Selection: Neomycin
Vector: pCMV6-AC-GFP (PS100010)
E. coli Selection: Ampicillin (100 ug/mL)
ORF Nucleotide Sequence: >RG236835 representing NM_001301171.
 Blue=ORF Red=Cloning site Green=Tag(s)

```
GCTCGTTTAGTGAACCGTCAGAATTTGTAAATACGACTCACTATAGGGCGGCCGGGAATTCGTCGACTG
GATCCGGTACCGAGGAGATCTGCCGCCGCGATCGCC
ATGGAGCCCTATGAGGCTCAAAAGATGATGGCCGAGATCCGGGGCTCCAAGGAGACGAACTCAGCCC
TTGCTCTGTATGACACACCCTATGAGCCAGAGGAGGATGGGGCCACCCCGAAGGTGAGGGGGCCCCC
TGGCCCCGGGAGTCCCGCTGCCAGAGGATGATGAGAGGCCCCCTGAGGAGTATGACCAGCCCTGGGAG
TGAAGAAGGAGCGGATTTCAAAGCCTTTCAGCCAGTTTGAAGGACCGGAGAAGAGCTGCCTGTCA
CCTGGCCGGGAGGAGAAGGGCGGCTACCTCCCGACTCTCTGCAGGGAACCCCAAGTCAGCAAACCC
CTAAGCATGGAGCCAGCAGCCCTGGGGAGTGGACAGATCCAGCACTGCCTCTGAAAACAGGTC
TGGTATCACGGGCGCATCAGCCGAACCGACGCCGAGAACCTGCTCCGGCTGTGCAAAGAGGCCAGCTAC
CTGGTGCACAACAGTGAGACCAGCAAGAATGACTTCTCCCTCTCCCTCAAGAGCAGCCAGGGATTATG
CACATGAAGCTGTCCGAACCAAGGAACACAAATATGTGCTGGGCCAGAACAGCCCGCCCTTACAGCAGC
GTCCCTGAAATTGTGACCACTATGCCAGCCGCAAGCTACCCATTAAGGGAGCCGAACACATGTCCCTG
CTCTACCCTGTGGCCATCCGGACTCTT
ACGCGTACGCGGCCGCTCGAG - GFP Tag - GTTAAAC
```

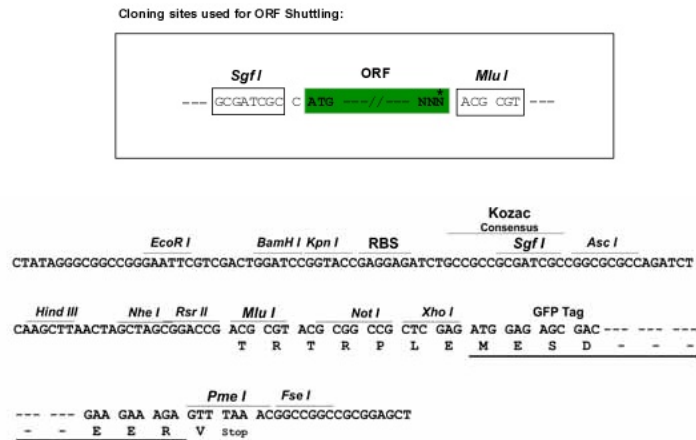
Protein Sequence: >Peptide sequence encoded by RG236835
 Blue=ORF Red=Cloning site Green=Tag(s)

```
MEPYEAQKMAEIRGSKETATQPLPLYDTPYEPEEDGATPEGEGAPWPRESRLPEDDERPPEEYDQPWE
WKKERISKAFAAQFEGPEKSCLSPGREEKGRLLPRLSAGNPKSAKPLSMEPSSPLGEWTDPALPLENQV
WYHGAISRDAENLLRLCKEASYLVRNSETSKNDFSLSLKSSQGFMMHMLSRKKEHKYVLGQNSPPFSS
VPEIVHHYASRKLPIKGAEHMSLLYPVAIRTL
TRTRPLEMESDESGLPAMEIECRITGTLNGVEFELVGGEGTPEQGRMTNKMSTKGALTFSPYLLSHV
MGYGFYHFGTYPSTYENPFLHAINNGGYTNRIEKYEDGGVLHVSFSYRYEAGRVIGDFKVMGTGFPED
SVIFTDKIIRSNAIVEHLHPMGDNDLDGSTRTRFSLRDGGYSSVVDSHMHFKSAIHPISILQNGGPMFA
FRRVEEDHSNTELGIVEYQHAFKTPDADAGEERV
```



Restriction Sites: SgfI-MluI

Cloning Scheme:



ACCN: NM_001301171

ORF Size: 717 bp

OTI Disclaimer: The molecular sequence of this clone aligns with the gene accession number as a point of reference only. However, individual transcript sequences of the same gene can differ through naturally occurring variations (e.g. polymorphisms), each with its own valid existence. This clone is substantially in agreement with the reference, but a complete review of all prevailing variants is recommended prior to use. [More info](#)

OTI Annotation: This clone was engineered to express the complete ORF with an expression tag. Expression varies depending on the nature of the gene.

Components: The ORF clone is ion-exchange column purified and shipped in a 2D barcoded Matrix tube containing 10ug of transfection-ready, dried plasmid DNA (reconstitute with 100 ul of water).

RefSeq: [NM_001301171.1](#), [NP_001288100.1](#)

RefSeq Size: 1679 bp

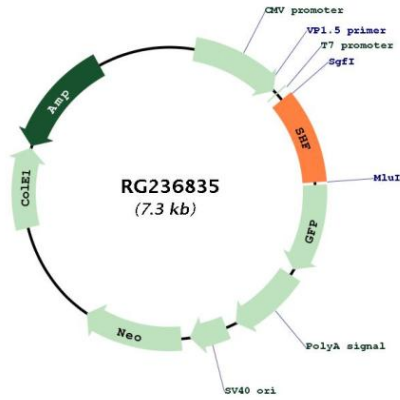
RefSeq ORF: 720 bp

Locus ID: 90525

Cytogenetics: 15q21.1

MW: 27.5 kDa

Product images:



Circular map for RG236835