

## Product datasheet for **RG236829**

### IFNAR2 (NM\_001289126) Human Tagged ORF Clone

#### Product data:

Product Type:	Expression Plasmids
Product Name:	IFNAR2 (NM_001289126) Human Tagged ORF Clone
Tag:	TurboGFP
Symbol:	IFNAR2
Synonyms:	IFN-alpha-REC; IFN-R; IFNABR; IFNARB; IMD45
Mammalian Cell Selection:	Neomycin
Vector:	pCMV6-AC-GFP (PS100010)
E. coli Selection:	Ampicillin (100 ug/mL)
ORF Nucleotide Sequence:	>RG236829 representing NM_001289126. Blue=ORF Red=Cloning site Green=Tag(s)

```
GCTCGTTTAGTGAACCGTCAGAATTTGTAAACGACTCACTATAGGGCGCCGGGAATTCGTCGACTG
GATCCGGTACCGAGGAGATCTGCCGCCGCGATCGCC
ATGCTTTTGAGCCAGAATGCCTTCATCTTCAGATCACTTAATTTGGTTTCATGGTGTATATCAGCCTC
GTGTTTGGTATTTTCATATGATTCGCCTGATTACACAGATGAATCTTGCACTTTCAAGATATCATTGCGA
AATTTCCGGTCCATCTTATCATGGGAATTAACCACTCCATTGTACCACTCACTATACATTGCTG
TATAAATCATGAGTAAACCAGAAGATTTGAAGGTGGTTAAGAACTGTGCAAATACCACAAGATCATTT
TGTGACCTCACAGATGAGTGGAGAAGCACACAGGCGCTATGTCACCGTCTAGAAGGATTGAGCGGG
AACACAACGTTGTTTCAGTTGCTCACACAATTTCTGGCTGGCCATAGACATGTCTTTGAACCACCAGAG
TTTGAGATTGTTGGTTTTACCAACCACATTAATGTGATGGTGAAATTTCCATCTATTGTTGAGGAAGAA
TTACAGTTTGATTATCTCTCGTCATTGAAGAACAGTCAGAGGGAATTGTTAAGAAGCATAAACCCGAA
ATAAAAGGAAACATGAGTGGAAATTTCCACCTATATCATTGACAAGTTAATCCAAACACGAACTACTGT
GTATCTGTTTATTTAGAGCACAGTGATGAGCAAGCAGTAATAAAGTCTCCCTTAAATGCACCTCCTT
CCACCTGGCCAGGAATCAGAATTTTCA
ACGCGTACGCGGCCGCTCGAG - GFP Tag - GTTTAAAC
```



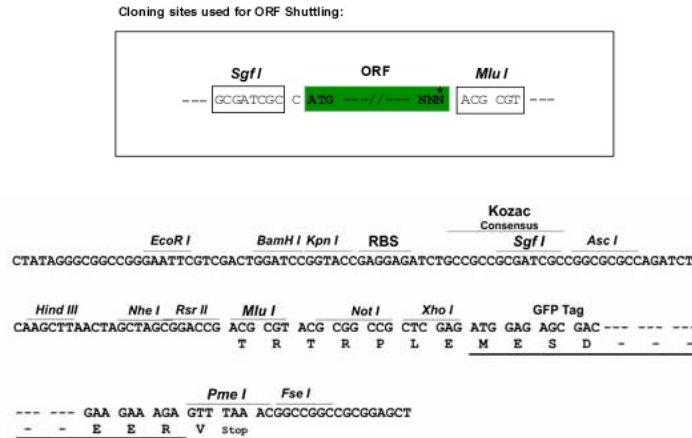
[View online »](#)

**Protein Sequence:** >Peptide sequence encoded by RG236829  
 Blue=ORF Red=Cloning site Green=Tag(s)

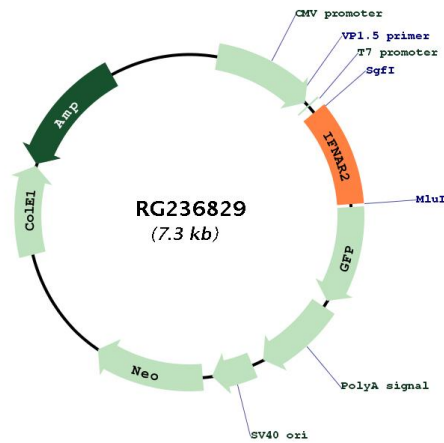
MLLSQNAFIFRSLNLVLMVYISLVFGISYDSPDYDESCTFKISLRNFRSILSWELKNHSIVPTHYLL  
 YTIMSKPEDLKVVKNCANTRSFCDLTDEWRSTHEAYVTVLEGFSGNTTLFSCSHNFWLAIDMSFEPPE  
 FEIVGFTNHINVMVKFSPIVEEELQFDLSLVIEEQSEGIKKHKPEIKGNMNGNFYIIDKLIPNTNYC  
 VSVYLEHSDEQAVIKSPLKCTLLPPGQSEFS  
 TRTRPLEMESDESGLPAMEIECRITGTLNGVEFELVGGEGTPEQGRMTNKMSTKGALTFSPYLLSHV  
 MGYGFYHFGTYPSTYENPFLHAINNGGYTNTRIEKYEDGGVLHVSFSYRYEAGRVIGDFKVMGTGFPED  
 SVIFTDKIIRSNAIVEHLHPMGDNDLDGSFTRTFSLRDGGYSSVVDSHMHFKSAIHPSILQNGGPMFA  
 FRRVEEDHSNTELGIVEYQHAFKTPDADAGEERV

**Restriction Sites:** SgfI-MluI

**Cloning Scheme:**



**Plasmid Map:**



**ACCN:** NM\_001289126

<b>ORF Size:</b>	717 bp
<b>OTI Disclaimer:</b>	The molecular sequence of this clone aligns with the gene accession number as a point of reference only. However, individual transcript sequences of the same gene can differ through naturally occurring variations (e.g. polymorphisms), each with its own valid existence. This clone is substantially in agreement with the reference, but a complete review of all prevailing variants is recommended prior to use. <a href="#">More info</a>
<b>OTI Annotation:</b>	This clone was engineered to express the complete ORF with an expression tag. Expression varies depending on the nature of the gene.
<b>Components:</b>	The ORF clone is ion-exchange column purified and shipped in a 2D barcoded Matrix tube containing 10ug of transfection-ready, dried plasmid DNA (reconstitute with 100 ul of water).
<b>RefSeq:</b>	<a href="#">NM_001289126.1</a> , <a href="#">NP_001276055.1</a>
<b>RefSeq Size:</b>	2789 bp
<b>RefSeq ORF:</b>	720 bp
<b>Locus ID:</b>	3455
<b>UniProt ID:</b>	<a href="#">P48551</a>
<b>Cytogenetics:</b>	21q22.11
<b>Protein Families:</b>	Druggable Genome, Transmembrane
<b>Protein Pathways:</b>	Cytokine-cytokine receptor interaction, Jak-STAT signaling pathway, Natural killer cell mediated cytotoxicity, Toll-like receptor signaling pathway
<b>MW:</b>	27.8 kDa
<b>Gene Summary:</b>	The protein encoded by this gene is a type I membrane protein that forms one of the two chains of a receptor for interferons alpha and beta. Binding and activation of the receptor stimulates Janus protein kinases, which in turn phosphorylate several proteins, including STAT1 and STAT2. The protein belongs to the type II cytokine receptor family. Mutations in this gene are associated with Immunodeficiency 45. [provided by RefSeq, Jul 2020]