

Product datasheet for **RG236821**

CNOT8 (NM_001301074) Human Tagged ORF Clone

Product data:

Product Type:	Expression Plasmids
Product Name:	CNOT8 (NM_001301074) Human Tagged ORF Clone
Tag:	TurboGFP
Symbol:	CNOT8
Synonyms:	CAF1; Caf1b; CALIF; hCAF1; POP2
Mammalian Cell Selection:	Neomycin
Vector:	pCMV6-AC-GFP (PS100010)
E. coli Selection:	Ampicillin (100 ug/mL)
ORF Nucleotide Sequence:	>RG236821 representing NM_001301074. Blue=ORF Red=Cloning site Green=Tag(s)

```
GCTCGTTTAGTGAACCGTCAGAATTTGTAAACGACTCACTATAGGGCGCCGGGAATTCGTCGACTG
GATCCGGTACCGAGGAGATCTGCCGCCGCGATCGCC
ATGCCTGCAGCACTTGTGGAGAATAGCCAGGTTATCTGTGAAGTGTGGCCAGTAATCTAGAAGAAGAG
ATGAGGAAGATCCGAGAAATCGTGCTCAGTTACAGTTATATTGCCATGGACACAGAATTTCCAGGTGTT
GTGGTGCACCAATTGGTGAATTCGTAGTTCCATAGATTACCAATATCAGCTTCTGCGGTGCAATGTT
GACCTTTAAAAATTATCCAGCTGGCCTTACATTCACAAATGAGAAGGGAGAGTATCCTTCTGGAATC
AATACTTGGCAGTTCAATTTCAAATTTAACCTTACTGGCTATGATTTGGCTATATGGTAAAGTTGCTT
ACAGATTCCTGTTTCCAGAAGGGAACATGAATTCCTTCATATTCTGAACCTTTCTTCCCATCCATT
TATGATGTGAAATACCTGATGAAGAGCTGCAAAAATCTTAAGGGAGGTCTTCAGGAAGTTGCTGATCAG
TTGGATTTGCAGAGGATTGGAAGGCAGCACAGGCTCAGACTCACTGCTGACAGGAATGGCTTTC
TTTAGGATGAAAGAGTTGTTTTTGGAGACAGCATTGATGATGCCAAGTACTGTGGGCGGCTCTATGGC
TTAGGCACAGGAGTGGCCAGAAGCAGAATGAGGATGTGGACTCTGCCAGGAGAAGATGAGCATCCTG
GCGATTATCAACAACATGCAGCAG
ACGCGTACGCGGCCGCTCGAG - GFP Tag - GTTAAAC
```



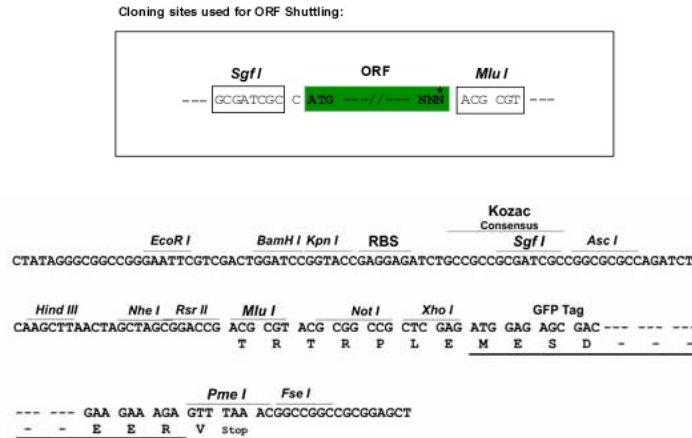
[View online »](#)

Protein Sequence: >Peptide sequence encoded by RG236821
 Blue=ORF Red=Cloning site Green=Tag(s)

MPAALVENSQVICEVWASNLEEMRKIREIVLSYSYIAMDTEFPGVVVRPIGEFRSSIDYQYQLLR CNV
 DLLKIIQLGLTFNEKGEYPSGINTWQFNFKFNL TGYDFGYMVKLLTDSRLPEEEHEFFHILNLFPSI
 YDVKYLKMSCKNLKGLQEVADQLDLQRIGRQHQA GSDSLLTGMAFFRMKELFFEDSIDDAKYCGRLYG
 LGTGVAAKQNEVDVSAQEKMSILAIINNMQQ
 TRTRPLEMESDESGLPAMEIECRITGTLNGVEFELVGGGEGTPEQGRMTNKMSTKGALTFSPYLLSHV
 MGYGFYHFGTYPSGYENPFLHAINNGGYTNTRIEKYEDGGVLHVSFSYRYEAGRVIGDFKVMGTGFPED
 SVIFTDKIIRS NATVEHLHPMGDNDLDGSFTRTFLRDGGYSSVVD SHMHFKSAIHPSILQNGGPMFA
 FRRVEEDHSNTELGIVEYQHAFKTPDADAGEERV

Restriction Sites: Sgfl-MluI

Cloning Scheme:



ACCN: NM_001301074

ORF Size: 714 bp

OTI Disclaimer: The molecular sequence of this clone aligns with the gene accession number as a point of reference only. However, individual transcript sequences of the same gene can differ through naturally occurring variations (e.g. polymorphisms), each with its own valid existence. This clone is substantially in agreement with the reference, but a complete review of all prevailing variants is recommended prior to use. [More info](#)

OTI Annotation: This clone was engineered to express the complete ORF with an expression tag. Expression varies depending on the nature of the gene.

Components: The ORF clone is ion-exchange column purified and shipped in a 2D barcoded Matrix tube containing 10ug of transfection-ready, dried plasmid DNA (reconstitute with 100 ul of water).

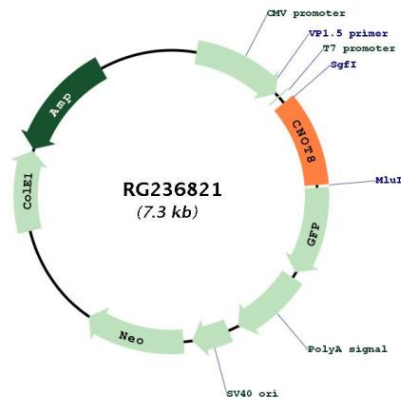
RefSeq: [NM_001301074.2](#)

RefSeq Size: 2459 bp

RefSeq ORF: 717 bp

Locus ID:	9337
UniProt ID:	Q9UFF9
Cytogenetics:	5q33.2
Protein Families:	Transcription Factors
Protein Pathways:	RNA degradation
MW:	27.9 kDa
Gene Summary:	Has 3'-5' poly(A) exoribonuclease activity for synthetic poly(A) RNA substrate. Its function seems to be partially redundant with that of CNOT7. Catalytic component of the CCR4-NOT complex which is linked to various cellular processes including bulk mRNA degradation, miRNA-mediated repression, translational repression during translational initiation and general transcription regulation. During miRNA-mediated repression the complex seems also to act as translational repressor during translational initiation. Additional complex functions may be a consequence of its influence on mRNA expression. Associates with members of the BTG family such as TOB1 and BTG2 and is required for their anti-proliferative activity. [UniProtKB/Swiss-Prot Function]

Product images:



Circular map for RG236821