

Product datasheet for **RG236817**

MTRF1L (NM_001301871) Human Tagged ORF Clone

Product data:

Product Type:	Expression Plasmids
Product Name:	MTRF1L (NM_001301871) Human Tagged ORF Clone
Tag:	TurboGFP
Symbol:	MTRF1L
Synonyms:	HMRF1L; MRF1L; mtRF1a
Mammalian Cell Selection:	Neomycin
Vector:	pCMV6-AC-GFP (PS100010)
E. coli Selection:	Ampicillin (100 ug/mL)
ORF Nucleotide Sequence:	>RG236817 representing NM_001301871. Blue=ORF Red=Cloning site Green=Tag(s)

```
GCTCGTTTAGTGAACCGTCAGAATTTGTAAATACGACTCACTATAGGGCGCCGGGAATTCGTCGACTG
GATCCGGTACCGAGGAGATCTGCCGCCGCGATCGCC
ATGTTGTTTACATCAGAGATATTTGATATGTATCAGCAATATGCTGCATTTAAAAGATGGCATTGAA
ACCCTGGAATATTTCCAAGTGAAGTGGCTTAGACATGCATCTGCCAGCATTGGGGGTTGAGAA
GCCTATAGGCACATGAAATTTGAAGGAGGTGTTACAGAGTACAAAGAGTGCCAAAGACAGAAAAGCAA
GGCCGCGTCCATACTAGCACCATGACTGTAGCAATATTACCCAGCCTACTGAGATTAATCTGGTGATT
AATCCGAAAGATTTGAGAATTGACACTAAGCGAGCCAGTGGAGCTGGGGGCAGCATGTAATACCAGC
GACAGTGTCTCCGATAGTTTCATCTTCCAACAGGTGTTGTTTCTGAATGTCAACAAGAGAGATCTCAG
CTGAAAAATAAAGAGCTGGCTATGACAAAAGTTAGGTGCAAAACTGTACAGCATGCATCTAGAAGAAGAA
ATAAATAAAGACAGAATGCTAGAAAAATTCAGATTGGAAGTAAAGGAAGATCAGAGAAAATAAGAACA
TATAATTTCCACAGAACCAGGTCACAGATCACAGAATAAACAAGACGCTGCATGATCTTGAAACTTTT
ATGCAAGGAGATTATCTACTGGATGAACCTGTACAGTCATTGAAGGAATACGCCGATTATGAATCTTTA
GTAGAAATTTTCCAAAAAGTT
ACGCGTACGCGGCCGCTCGAG - GFP Tag - GTTAAAC
```



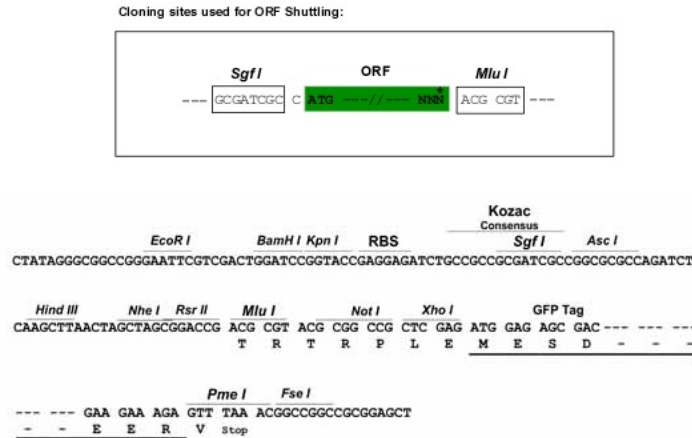
[View online »](#)

Protein Sequence: >Peptide sequence encoded by RG236817
 Blue=ORF Red=Cloning site Green=Tag(s)

MLFTSEIFDMYQQYA AFKRWHFETLEYFPSELGGLR HASASIGGSEAYRHMKFEGGVHRVQRV PKTEKQ
 GRVHTSTMTVA ILPQPT E INLVINPKDLRIDTKRASGAGGQHVNTTDSAVRIVHLPTGVVSECQ QERSQ
 LKNKELAMTKLRAKLYSMHLEEEINKRQNKARKIQIGSKGRSEKIRTYNFPQNRVTDHRINKTLHDLETF
 MQGDYLLDELVQSLKEYADYELVEIISQKV
 TRTRPLEMESDESGLPAMEIECRITGTLNGVEFELVGGEGTPEQGRMTNKMKSTKGALTFSPYLLSHV
 MGYGFYHFGTYPSGYENPFLHAINNGGYTNTRIEKYEDGGVLHVSFSYRYEAGRVIGDFKVMGTGFPEP
 SVIFTDKIIRS NATVEHLHPMGDNDLDGSFTRTFSLRDGGYSSVVD SHMHFKSAIHPSILQNGGPMFA
 FRRVEEDHSNTELGIVEYQHAFKTPDADAGEERV

Restriction Sites: SgfI-MluI

Cloning Scheme:



ACCN: NM_001301871

ORF Size: 714 bp

OTI Disclaimer: The molecular sequence of this clone aligns with the gene accession number as a point of reference only. However, individual transcript sequences of the same gene can differ through naturally occurring variations (e.g. polymorphisms), each with its own valid existence. This clone is substantially in agreement with the reference, but a complete review of all prevailing variants is recommended prior to use. [More info](#)

OTI Annotation: This clone was engineered to express the complete ORF with an expression tag. Expression varies depending on the nature of the gene.

Components: The ORF clone is ion-exchange column purified and shipped in a 2D barcoded Matrix tube containing 10ug of transfection-ready, dried plasmid DNA (reconstitute with 100 ul of water).

RefSeq: [NM_001301871.2](#)

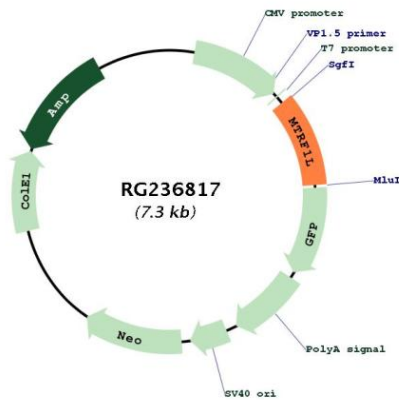
RefSeq Size: 3790 bp

RefSeq ORF: 717 bp

Locus ID: 54516
UniProt ID: [Q9UGC7](#)
Cytogenetics: 6q25.2
MW: 27.8 kDa

Gene Summary: The protein encoded by this gene plays a role in mitochondrial translation termination, and is thought to be a release factor that is involved in the dissociation of the complete protein from the final tRNA, the ribosome, and the cognate mRNA. This protein acts upon UAA and UAG stop codons, but has no in vitro activity against UGA, which encodes tryptophan in human mitochondrion, or, the mitochondrial non-cognate stop codons, AGA and AGG. This protein shares sequence similarity to bacterial release factors. Pseudogenes of this gene are found on chromosomes 4, 8, and 11. Alternative splicing results in multiple transcript variants. [provided by RefSeq, Sep 2014]

Product images:



Circular map for RG236817