

Product datasheet for **RG236812**

PPP1R7 (NM_001282411) Human Tagged ORF Clone

Product data:

Product Type:	Expression Plasmids
Product Name:	PPP1R7 (NM_001282411) Human Tagged ORF Clone
Tag:	TurboGFP
Symbol:	PPP1R7
Synonyms:	SDS22
Mammalian Cell Selection:	Neomycin
Vector:	pCMV6-AC-GFP (PS100010)
E. coli Selection:	Ampicillin (100 ug/mL)
ORF Nucleotide Sequence:	>RG236812 representing NM_001282411. Blue=ORF Red=Cloning site Green=Tag(s)

```
GCTCGTTTAGTGAACCGTCAGAATTTGTAAACGACTCACTATAGGGCGCCGGGAATTCGTCGACTG
GATCCGGTACCGAGGAGATCTGCCGCCCGCATCGCC
ATGGCGCGGAACGCGCGCGGGCAGCAACAGTCGCAGGAGATGATGGAGGAAGAACATGAGCTGCCT
GTGGACATGGAACCATCAACCTGGACAGAGATGCAGAGGATGTTGATTGAATCACTATCGCATAGGG
AAGATTGAAGGATTTGAGGACTGAAGAAAGTGAAGACTCTCGCTCCGCCAAAATTTAATTAATGC
ATTGAGAATCTGGAGGAGCTACAGAGTCTCGAGAGCTGGATCTTACGACAACCAGATCAAGAAGATT
GAGAATCTGGAGGCGCTAACAGAGCTGGAGATTCTAGATATTTCTTTAATCTGCTGAGAAACATCGAA
GGGTTGACAAGTTGACACGACTGAAAAACTCTCTTGGTCAACAATAAAATCAGTAAAATTGAGAAC
TTAAGCAACTTACATCAACTACAGATGCTAGAGCTGGGATCTAACCGCATCCGGGCAATCGAAAATC
GACACCTTAACCAACCTGGAGAGTTGTTTTGGGAAAAACAAAATTAATAAATTCAGAACCTGGAT
GCGCTACCAACCTGACAGTCTCAGTATGCAGAGCAACCGGCTGACCAAGATCGAGGGTCTGCAGAAC
CTGGTGAACCTGCGGGAGCTGTACCTTAGCCACAATGGCATCGAGGTCATCGAGGGCCTGGAGAACAAT
GTGCAGGACAGCCTCACGTAC
ACGCGTACGCGGCCGCTCGAG - GFP Tag - GTTTAAAC
```



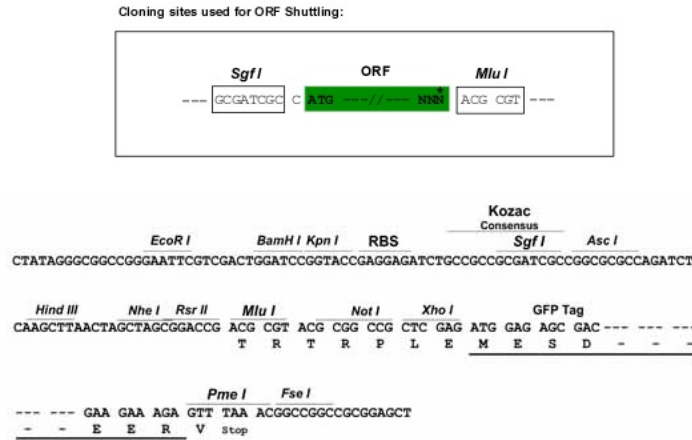
[View online »](#)

Protein Sequence: >Peptide sequence encoded by RG236812
 Blue=ORF Red=Cloning site Green=Tag(s)

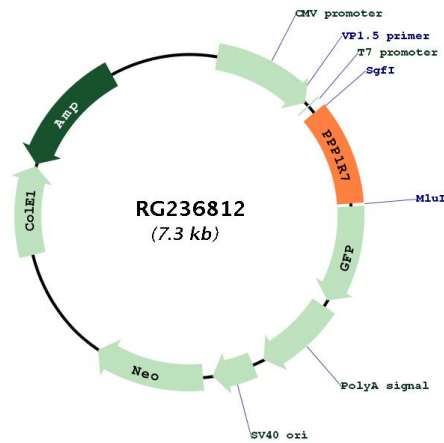
MAAERGAGQQSQEMEEEEHEL PVDMETINLDRDAEDVDLNHYRIGKIEGFEVLKKVKTLC LRQNLIKC
 IENLEELQSLRELDLYDNQIKKIENLEALTEILDISFNLLRNIEGVKDLTRLKKLFLVNNKISKIEN
 LSNLHQLQMLELGSNRIRAIENIDTLTNLESFLGKNKITKLQNLDALTNLTVLSMQSNRLTKIEGLQN
 LVNLREL YL SHNGIEVIEGLENNVQDSLTY
 TRTRPLEMESDESGLPAMEIECRITGTLNGVEFELVGGEGTPEQGRMTNKMSTKGALTFSPYLLSHV
 MGYGFYHFGTYP SGYENPFLHAINNGGYTNTRIEKYEDGGVLHVSFSYRYEAGRVIGDFKVMGTGFPED
 SVIFTDKIIRS NATVEHLHPMGDNDLDGSFTRTFSLRDGGYSSVVD SHMHFKSAIHPSILQNGGPMFA
 FRRVEEDHSNTELGIVEYQHAFKTPDADAGEERV

Restriction Sites: SgfI-MluI

Cloning Scheme:



Plasmid Map:



ACCN: NM_001282411

ORF Size:	711 bp
OTI Disclaimer:	The molecular sequence of this clone aligns with the gene accession number as a point of reference only. However, individual transcript sequences of the same gene can differ through naturally occurring variations (e.g. polymorphisms), each with its own valid existence. This clone is substantially in agreement with the reference, but a complete review of all prevailing variants is recommended prior to use. More info
OTI Annotation:	This clone was engineered to express the complete ORF with an expression tag. Expression varies depending on the nature of the gene.
Components:	The ORF clone is ion-exchange column purified and shipped in a 2D barcoded Matrix tube containing 10ug of transfection-ready, dried plasmid DNA (reconstitute with 100 ul of water).
RefSeq:	NM_001282411.1 , NP_001269340.1
RefSeq Size:	1674 bp
RefSeq ORF:	714 bp
Locus ID:	5510
UniProt ID:	Q15435
Cytogenetics:	2q37.3
Protein Families:	Druggable Genome, Phosphatase
MW:	27.8 kDa
Gene Summary:	This gene encodes a protein subunit that regulates the activity of the serine/threonine phosphatase, protein phosphatase-1. The encoded protein is required for completion of the mitotic cycle and for targeting protein phosphatase-1 to mitotic kinetochores. Alternate splicing results in multiple transcript variants. [provided by RefSeq, Sep 2013]