

## Product datasheet for **RG236809**

### **RAB23 (NM\_001278668) Human Tagged ORF Clone**

#### Product data:

Product Type:	Expression Plasmids
Product Name:	RAB23 (NM_001278668) Human Tagged ORF Clone
Tag:	TurboGFP
Symbol:	RAB23
Synonyms:	HSPC137
Mammalian Cell Selection:	Neomycin
Vector:	pCMV6-AC-GFP (PS100010)
E. coli Selection:	Ampicillin (100 ug/mL)
ORF Nucleotide Sequence:	>RG236809 representing NM_001278668. Blue=ORF Red=Cloning site Green=Tag(s)

```
GCTCGTTTAGTGAACCGTCAGAATTTGTAAACGACTCACTATAGGGCGCCGGGAATTCGTCGACTG
GATCCGGTACCGAGGAGATCTGCCGCCGCGATCGCC
ATGTTGGAGGAAGATATGGAAGTCGCCATAAAGATGGTGGTTGTAGGGAATGGAGCAGTTGGAAAATCA
AGTATGATTCAGCGATATTGCAAAGGCATTTTTACAAAAGACTACAAGAAAACCATGGAGTTGATTTT
TTGGAGCGACAAATCAAGTTAATGATGAAGATGTCAGACTAATGTTATGGGACTGCAGGTCAGGAG
GAATTTGATGCAATTACAAAGGCCTACTATCGAGGAGCCAGGCTTGTGTCTCGTCTCTACCACA
GATAGGGAATCTTTGAAGCAGTTCCAGTTGGAGAGAGAAAGTAGTAGCCGAAGTGGGAGATATACCA
ACTGTACTTGTGCAAAACAAGATTGATCTCTGGATGATTCTTGTATAAAGAATGAGGAAGCTGAGGCA
CTGGCAAAAAGGTTAAAGTTAAGATTCTACAGAACATCAGTGAAAGAAGTCTAAATGTGAATGAAGTT
TTTAAGTATTTGGCTGAAAAATACCTTCAGAACTCAAACAACAATAGCTGAGGATCCAGAACTAACG
CATTCAAGTAGTAACAAGATTGGTGTCTTAAATACATCTGGTGGAAAGTCACTCCGGTCAGAATTCAGGT
ACCCTCAATGGTGGAGATGTCATCAATCTTAGACCCAACAACAAGGACCAAGAAAAACAGAAATCCT
TTTAGCAGCTGTAGCATACCC
ACGCGTACGCGGCCGCTCGAG - GFP Tag - GTTAAAC
```



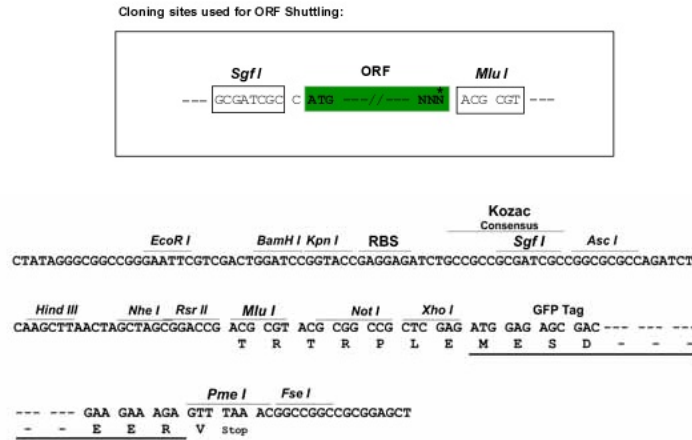
[View online »](#)

**Protein Sequence:** >Peptide sequence encoded by RG236809  
 Blue=ORF Red=Cloning site Green=Tag(s)

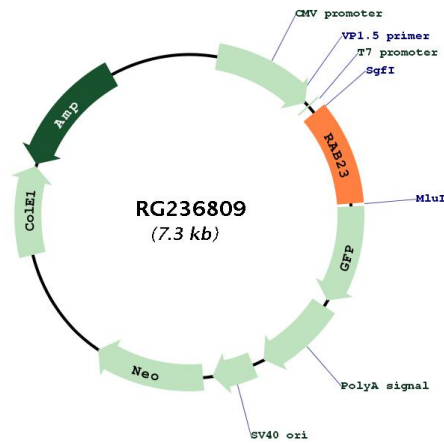
MLEEDMEVAIKMVVVNGAVGKSSMIQRYCKGIFTKDYKKTIGVDFLERQIQVNDEDVRLMLWDTAGQE  
 EFDAITKAYYRGAQACVLVFSTTDRESFEAVSSWREKVVAEVGDIPVTVLQNKIDLLDDSCIKNEEA  
 LAKRLKLRFYRTSVKEDLVNVEVFKYLAEKYLQKLKQQAEDPELTHSSSNKIGVFNTSGGSHSGQNSG  
 TLNGGDVINLRPNKQRTKKNRNPFSSCSIP  
 TRTRPLEMESDESGLPAMEIECRITGTLNGVEFELVGGGEGTPEQGRMTNKMSTKGALTFSPYLLSHV  
 MGYGFYHFGTYPSGYENPFLHAINNGGYTNTRIEKYEDGGVLHVSFSYRYEAGRVIGDFKVMGTGFPED  
 SVIFTDKIIRSNAIVEHLHPMGDNDLDGSFTRTFSLRDGGYSSVVD SHMHFKSAIHPSILQNGGPMFA  
 FRRVEEDHSNTELGIVEYQHAFKTPDADAGEERV

**Restriction Sites:** SgfI-MluI

**Cloning Scheme:**



**Plasmid Map:**



**ACCN:** NM\_001278668

<b>ORF Size:</b>	711 bp
<b>OTI Disclaimer:</b>	The molecular sequence of this clone aligns with the gene accession number as a point of reference only. However, individual transcript sequences of the same gene can differ through naturally occurring variations (e.g. polymorphisms), each with its own valid existence. This clone is substantially in agreement with the reference, but a complete review of all prevailing variants is recommended prior to use. <a href="#">More info</a>
<b>OTI Annotation:</b>	This clone was engineered to express the complete ORF with an expression tag. Expression varies depending on the nature of the gene.
<b>Components:</b>	The ORF clone is ion-exchange column purified and shipped in a 2D barcoded Matrix tube containing 10ug of transfection-ready, dried plasmid DNA (reconstitute with 100 ul of water).
<b>RefSeq:</b>	<a href="#">NM_001278668.1</a> , <a href="#">NP_001265597.1</a>
<b>RefSeq Size:</b>	4367 bp
<b>RefSeq ORF:</b>	714 bp
<b>Locus ID:</b>	51715
<b>UniProt ID:</b>	<a href="#">Q9ULC3</a>
<b>Cytogenetics:</b>	6p12.1-p11.2
<b>Protein Families:</b>	Druggable Genome
<b>Protein Pathways:</b>	Hedgehog signaling pathway
<b>MW:</b>	26.7 kDa
<b>Gene Summary:</b>	This gene encodes a small GTPase of the Ras superfamily. Rab proteins are involved in the regulation of diverse cellular functions associated with intracellular membrane trafficking, including autophagy and immune response to bacterial infection. The encoded protein may play a role in central nervous system development by antagonizing sonic hedgehog signaling. Disruption of this gene has been implicated in Carpenter syndrome as well as cancer. Alternative splicing results in multiple transcript variants. [provided by RefSeq, Jul 2013]