

Product datasheet for **RG236806**

FAM133B (NM_001288584) Human Tagged ORF Clone

Product data:

Product Type: Expression Plasmids
Product Name: FAM133B (NM_001288584) Human Tagged ORF Clone
Tag: TurboGFP
Symbol: FAM133B
Mammalian Cell Selection: Neomycin
Vector: pCMV6-AC-GFP (PS100010)
E. coli Selection: Ampicillin (100 ug/mL)
ORF Nucleotide Sequence: >RG236806 representing NM_001288584.
 Blue=ORF Red=Cloning site Green=Tag(s)

```
GCTCGTTTAGTGAACCGTCAGAATTTTGTAAATACGACTCACTATAGGGCGCCGGGAATTCGTCGACTG
GATCCGGTACCGAGGAGATCTGCCGCCGCGATCGCC
ATGAACCAATAGCAATGGCGAGATCAAGGGTCCAATCCAGTCTTCAGGGCCAACAATACAGGATTAT
CTGAATCGACCAAGGCCTACCTGGGAAGAAGTAAAAGAGCAACTAGAAAAGAAAAAGAAAGGCTCCAAG
GCTTTGGCTGAATTTGAAGAAAAATGAATGAGAACTGGAAGAAAGAACTGAAAAACACAGGGAGAAA
TTGTTAAGTGAAGTGAGAGCTCATCAAAAAAGACAGAGAAAAGAAAAAGAAAAGAAGAAATCTGGT
AGGTATTCATCTTCTTTCATCAAGCTCTGATTCTTCCAGCAGTCTTCTGATTCTGAAGATGAGGAT
AAGAAACAAGAAAAACGGAGAAAAGAAAAAGAAAGAAAGAAAGAAAGAAAGAAAGAAAGAAAGAA
GAAACTGAATCAGACAGTAAGGATAGTTTAAAAAAGAAAAAGAAAGTCAAAAGATGGAAGTGAAGAA
AAGGATATTAAGGACTCAGCAAAAAGAGAAAGATGTATTCTGAAGATAAACCTTTATCATCTGAGTCC
TTGTCAGAATCAGAGTATATTGAGGAGGTGCGAGCAAAAAGAAAGAAAGCAGTGAAGAACGAGAAAA
GCAACAGAAAAACAAAAAGAAAAAGAAAGCATAAGAAACACAGTAAGAAGAAGAAAAAGAGGCTGCT
AGTTCAAGTCCTGACTACCA
ACGCGTACGCGGCCGCTCGAG - GFP Tag - GTTAAAC
```

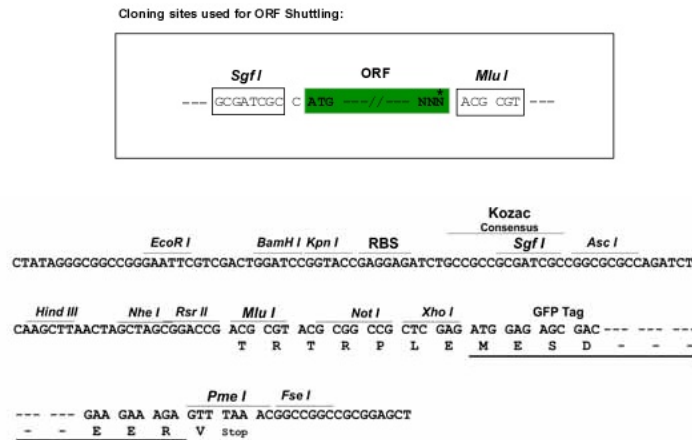
Protein Sequence: >Peptide sequence encoded by RG236806
 Blue=ORF Red=Cloning site Green=Tag(s)

```
MNPIAMARSRGPIQSSGPTIQDYLNRPRTWEEVKEQLEKSKKSKALAEFEKMNENWKKELEKHREK
LLSGSESSSKRQRKKEKSKGRYSSSSSSSSSSSSSEDEDKKQKRRKKKKNRSHKSSSESSMS
ETESDSKDSLKKKSKDGTETEKEKDIKGLSKRKMYSKPLSSESLSESEYIEEVRKKKSSSEEREK
ATEKTKKKKHKHKKKKAASSSPDSP
TRTRPLEMESDESGLPAMEIECRITGTLNGVEFELVGGEGTPEQGRMTNKMSTKGALTFSPYLLSHV
MGYGFYHFGTYPSTYENPFLHAINNGGYNTRIEKYEDGGVLHVSFSYRYEAGRVIGDFKVMGTGFPED
SVIFTDKIIRSNAIVEHLHPMGDNDLDGSTRTRFSLRDGGYSSVVDSHMHFKSAIHPSILQNGGPMFA
FRVEEDHSNTELGIVEYQHAFKTPDADAGEERY
```

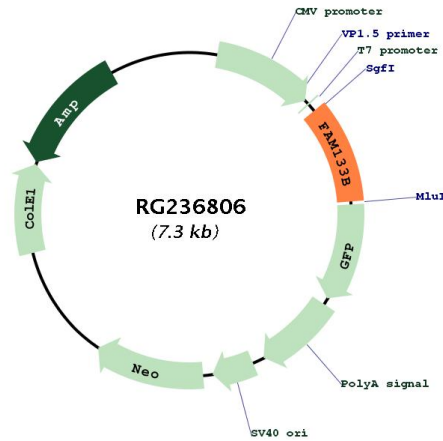


Restriction Sites: SgfI-MluI

Cloning Scheme:



Plasmid Map:



ACCN: NM_001288584

ORF Size: 711 bp

OTI Disclaimer: The molecular sequence of this clone aligns with the gene accession number as a point of reference only. However, individual transcript sequences of the same gene can differ through naturally occurring variations (e.g. polymorphisms), each with its own valid existence. This clone is substantially in agreement with the reference, but a complete review of all prevailing variants is recommended prior to use. [More info](#)

OTI Annotation: This clone was engineered to express the complete ORF with an expression tag. Expression varies depending on the nature of the gene.

Components:	The ORF clone is ion-exchange column purified and shipped in a 2D barcoded Matrix tube containing 10ug of transfection-ready, dried plasmid DNA (reconstitute with 100 ul of water).
RefSeq:	<u>NM_001288584.2</u>
RefSeq Size:	2455 bp
RefSeq ORF:	714 bp
Locus ID:	257415
UniProt ID:	<u>Q5BKY9</u>
Cytogenetics:	7q21.2
MW:	27.2 kDa