

## Product datasheet for **RG236801**

### EIF4EL3 (EIF4E2) (NM\_001282958) Human Tagged ORF Clone

#### Product data:

Product Type:	Expression Plasmids
Product Name:	EIF4EL3 (EIF4E2) (NM_001282958) Human Tagged ORF Clone
Tag:	TurboGFP
Symbol:	EIF4E2
Synonyms:	4E-LP; 4EHP; EIF4EL3; h4EHP; IF4e
Mammalian Cell Selection:	Neomycin
Vector:	pCMV6-AC-GFP (PS100010)
E. coli Selection:	Ampicillin (100 ug/mL)
ORF Nucleotide Sequence:	>RG236801 representing NM_001282958. Blue=ORF Red=Cloning site Green=Tag(s)

```
GCTCGTTTAGTGAACCGTCAGAATTTTGTAAACGACTCACTATAGGGCGGCCGGGAATTCGTCGACTG
GATCCGGTACCGAGGAGATCTGCCGCCGCGATCGCC
ATGAACAACAAGTTCGACGCTTTGAAAGATGATGACAGTGGGACCATGATCAGAATGAAGAAAACAGC
ACACAGAAAGATGGTGAGAAGGAAAAACGGAACGAGACAAGAATCAGAGCAGTAGCAAGAGAAAGGCT
GTTGTCCCTGGACCGGCAGAGCATCCCCTGCAGTACAACACACTTTTGGTACTCCAGGAGAACCCCC
GGCCGTCCCACGAGCTCACAGAGCTATGAACAGAATATCAAACAGATTGGCACCTTGCCTCTGTGGAG
CAGTTCGGAGGTTTTATAGCCACATGGTACGTCCTGGGACCTGACAGGCCACAGTGACTTCCATCTC
TTCAAAGAAGGAATTAACCCATGTGGGAGGATGATGCAAATAAAAATGGTGGCAAGTGGATTATTCGG
CTGCGGAAGGGCTTGGCCTCCCCTTGTGGGAGAATCTCATTGTCATGCTGGGGGAACAGTTTCATG
GTTGGGAGGAGATCTGTGGGGCTGTGGTGTCTGTCCGCTTTCAGGAAGACATTATTTCAATATGGAAT
AAGACTGCCAGTGACCAAGCAACCACAGCCGAATCCGGGACACACTTCGGCGAGTGCTTAACCTACCT
CCCAACACCATTATGGAATACAAAACACACCCGACAGCATCAAGGCCTGGGAGGAGTTTCATGGCCTG
GTGAACAGCAGCGGCCGC
ACGCGTACGCGGCCGCTCGAG - GFP Tag - GTTAAAC
```



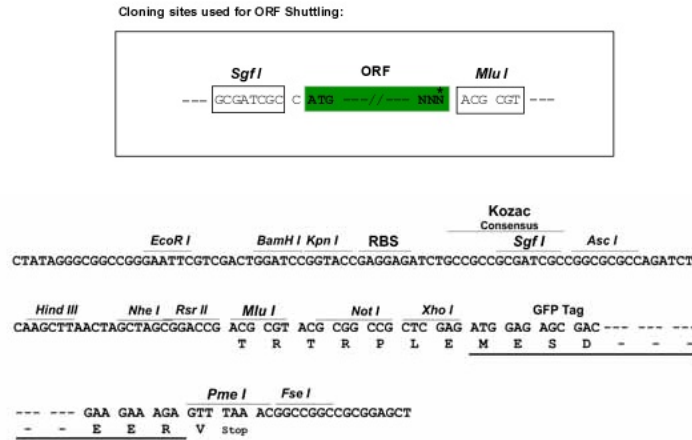
[View online »](#)

**Protein Sequence:** >Peptide sequence encoded by RG236801  
 Blue=ORF Red=Cloning site Green=Tag(s)

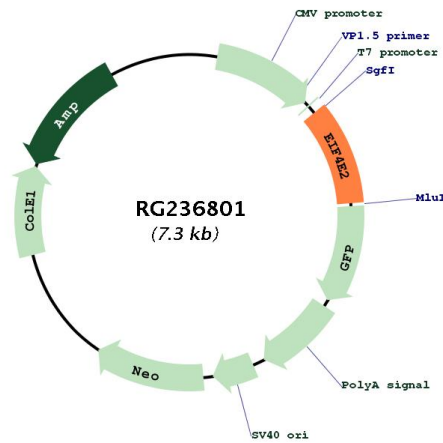
MNNKFDALKDDSGDHDQNEENSTQKDGEEKTERDKNQSSSKRKAVVPGPAEHPLQYNYTFWYSR RTP  
 GRPTSSSQSYEQNIKQIGTFASVEQFWRFYSHMVRPGDLTGHSDFHLFKEGIKPMWEDDANKNGGKWIIR  
 LRKGLASRCWENLILAMLGEQFMVGEEICGAVVSVRFQEDIISIWNKTASDQATTARIRDTLRRVNLNP  
 PNTIMEYKTHTDSIKAWEEFHGLVNSSGR  
 TRTRPLEMESDESGLPAMEIECRITGTLNGVEFELVGGGEGTPEQGRMTNKMSTKGALTFSPYLLSHV  
 MGYGFYHFGTYPSGYENPFLHAINNGGYTNTRIEKYEDGGVLHVSFSYRYEAGRVIGDFKVMGTGFPED  
 SVIFTDKIIRS NATVEHLHPMGDNDLDGSFTRTFSLRDGGYSSVVD SHMHFKSAIHPSILQNGGPMFA  
 FRRVEEDHSNTELGIVEYQHAFKTPDADAGEERV

**Restriction Sites:** SgfI-MluI

**Cloning Scheme:**



**Plasmid Map:**



**ACCN:** NM\_001282958

<b>ORF Size:</b>	708 bp
<b>OTI Disclaimer:</b>	The molecular sequence of this clone aligns with the gene accession number as a point of reference only. However, individual transcript sequences of the same gene can differ through naturally occurring variations (e.g. polymorphisms), each with its own valid existence. This clone is substantially in agreement with the reference, but a complete review of all prevailing variants is recommended prior to use. <a href="#">More info</a>
<b>OTI Annotation:</b>	This clone was engineered to express the complete ORF with an expression tag. Expression varies depending on the nature of the gene.
<b>Components:</b>	The ORF clone is ion-exchange column purified and shipped in a 2D barcoded Matrix tube containing 10ug of transfection-ready, dried plasmid DNA (reconstitute with 100 ul of water).
<b>RefSeq:</b>	<a href="#">NM_001282958.1</a> , <a href="#">NP_001269887.1</a>
<b>RefSeq Size:</b>	3630 bp
<b>RefSeq ORF:</b>	711 bp
<b>Locus ID:</b>	9470
<b>Cytogenetics:</b>	2q37.1
<b>Protein Families:</b>	Transcription Factors
<b>Protein Pathways:</b>	Insulin signaling pathway, mTOR signaling pathway
<b>MW:</b>	27.7 kDa
<b>Gene Summary:</b>	Recognizes and binds the 7-methylguanosine-containing mRNA cap during an early step in the initiation (PubMed:9582349, PubMed:17368478, PubMed:25624349). Acts as a repressor of translation initiation (PubMed:22751931). In contrast to EIF4E, it is unable to bind eIF4G (EIF4G1, EIF4G2 or EIF4G3), suggesting that it acts by competing with EIF4E and block assembly of eIF4F at the cap (By similarity).[UniProtKB/Swiss-Prot Function]