

## Product datasheet for **RG236799**

### HAGH (NM\_001286249) Human Tagged ORF Clone

#### Product data:

Product Type:	Expression Plasmids
Product Name:	HAGH (NM_001286249) Human Tagged ORF Clone
Tag:	TurboGFP
Symbol:	HAGH
Synonyms:	GLO2; GLX2; GLXII; HAGH1
Mammalian Cell Selection:	Neomycin
Vector:	pCMV6-AC-GFP (PS100010)
E. coli Selection:	Ampicillin (100 ug/mL)
ORF Nucleotide Sequence:	>RG236799 representing NM_001286249. Blue=ORF Red=Cloning site Green=Tag(s)

```
GCTCGTTTAGTGAACCGTCAGAATTTGTAAACGACTCACTATAGGGCGGCCGGGAATTCGTCGACTG
GATCCGGTACCGAGGAGATCTGCCGCCGCGATCGCC
ATGGTGGTGGGCCGAGGGCTGCTCGGCCCGCAGCCTCGCCGCGCTGGGAGCCGCTGCGCCCGCCGA
GGCCTCGGTCCAGCCCTGCTGGGAGTTTCTGCCACACAGATTTGCGGAAGAACCTGACCGTGGACGAG
GGCACCATGAAGGTAGAGGTGCTGCCTGCCCTGACCGACAACATACATGTACCTGGTCATTGATGATGAG
ACCAAGGAGGCTGCCATTGTGGATCCGGTGCAGCCCCAGAAGTCGTGGACGCGGCAGAAAGCACGGG
GTGAAACTGACCACAGTCTCACCACCCACCACCCTGGGACCATGCTGGCGGGAATGAGAACTGGTC
AAGCTGGAGTCGGGACTGAAGGTGTACGGGGTGACGACCGTATCGGGCCCTGACTCACAAGATCACT
CACCTGTCCACACTGCAGGTGACACCTTGTGGTGGCTGCGGGAAGTTCTATGAAGGGACTGCGG
ATGAGATGTGTAAGCTCTGCTGGAGGTCTGGGCCGGCTCCCCCGGACACAAGAGTCTACTGTGGCC
ACGAGTACACCATCAACAACCTCAAGTTTGACGCCACGTGGAGCCCGCAATGCCGCCATCCGGGAGA
AGCTGGCCTGGGCAAGGAGAAGTACAGCATCGGGGAGCCACAGTGCCATCCACCCTGGCAGAGGAGT
TTACCTACAACCCCTTCA
ACGCGTACGCGGCCGCTCGAG - GFP Tag - GTTAAAC
```



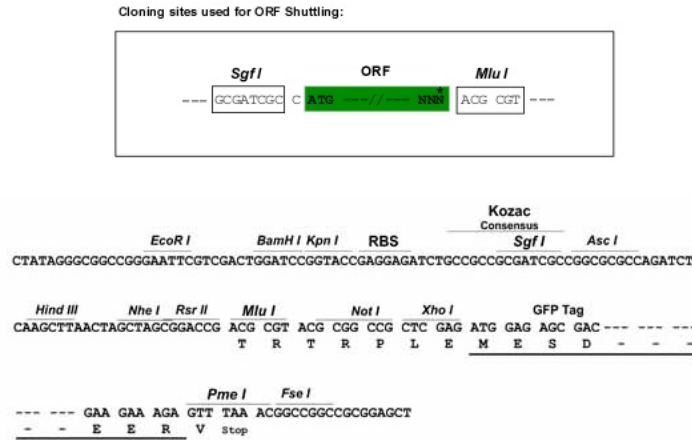
[View online »](#)

**Protein Sequence:** >Peptide sequence encoded by RG236799  
 Blue=ORF Red=Cloning site Green=Tag(s)

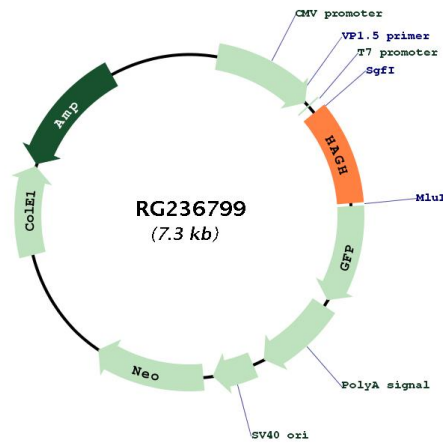
MVVGRGLLGRRSLAALGAACARRGLGPALLGVFCHTDLRKNLTVDEGTMKVEVLPALTDNYMYLVIDDE  
 TKEAAIVDPVQPQKVVDAAARKHGVKLTTVLTTHHHWDHAGGNEKLVKLESGLVYGGDDRIGALTHKIT  
 HLSTLQVTPCLWLAAGSSMKGLRMRCVKLCWRSWAGSPRTQESTVATSTPSTTSSLHATWSPAMPSPGR  
 SWPGPRRSTASGSPQCHPPWQRSLPTTPS  
 TRTRPLEMESDESGLPAMEIECRITGTLNGVEFELVGGEGTPEQGRMTNKMSTKGALTFSPYLLSHV  
 MGYGFYHFGTYPSGYENPFLHAINNGGYTNTRIEKYEDGGVLHVSFSYRYEAGRVIGDFKVMGTGFPEP  
 SVIFTDKIIRSNAIVEHLHPMGDNDLDGSFTRTFSLRDGGYSSVVDSHMHFKSAIHPSILQNGGPMFA  
 FRRVEEDHSNTELGIVEYQHAFKTPDADAGEERV

**Restriction Sites:** SgfI-MluI

**Cloning Scheme:**



**Plasmid Map:**



**ACCN:** NM\_001286249

<b>ORF Size:</b>	708 bp
<b>OTI Disclaimer:</b>	The molecular sequence of this clone aligns with the gene accession number as a point of reference only. However, individual transcript sequences of the same gene can differ through naturally occurring variations (e.g. polymorphisms), each with its own valid existence. This clone is substantially in agreement with the reference, but a complete review of all prevailing variants is recommended prior to use. <a href="#">More info</a>
<b>OTI Annotation:</b>	This clone was engineered to express the complete ORF with an expression tag. Expression varies depending on the nature of the gene.
<b>Components:</b>	The ORF clone is ion-exchange column purified and shipped in a 2D barcoded Matrix tube containing 10ug of transfection-ready, dried plasmid DNA (reconstitute with 100 ul of water).
<b>RefSeq:</b>	<a href="#">NM_001286249.2</a>
<b>RefSeq Size:</b>	1443 bp
<b>RefSeq ORF:</b>	711 bp
<b>Locus ID:</b>	3029
<b>UniProt ID:</b>	<a href="#">Q16775</a>
<b>Cytogenetics:</b>	16p13.3
<b>Protein Families:</b>	Druggable Genome
<b>Protein Pathways:</b>	Pyruvate metabolism
<b>MW:</b>	25.9 kDa
<b>Gene Summary:</b>	The enzyme encoded by this gene is classified as a thiolesterase and is responsible for the hydrolysis of S-lactoyl-glutathione to reduced glutathione and D-lactate. Three transcript variants encoding different isoforms have been found for this gene. [provided by RefSeq, Oct 2013]