

## Product datasheet for **RG236793**

### LYSMD4 (NM\_001284420) Human Tagged ORF Clone

#### Product data:

**Product Type:** Expression Plasmids  
**Product Name:** LYSMD4 (NM\_001284420) Human Tagged ORF Clone  
**Tag:** TurboGFP  
**Symbol:** LYSMD4  
**Mammalian Cell Selection:** Neomycin  
**Vector:** pCMV6-AC-GFP (PS100010)  
**E. coli Selection:** Ampicillin (100 ug/mL)  
**ORF Nucleotide Sequence:** >RG236793 representing NM\_001284420.  
 Blue=ORF Red=Cloning site Green=Tag(s)

```
GCTCGTTTAGTGAACCGTCAGAATTTTGTAAACGACTCACTATAGGGCGGCCGGGAATTCGTCGACTG
GATCCGGTACCGAGGAGATCTGCCGCCGCGATCGCC
ATGTTTCGTAGCCAATCCGCAGGCGCGGTGGCAGCTGCGGGTGCGGGTGCGGGTTCGCGAGTCGCCGGT
CGCCGGTGCGGCGGAGCCTGGGCGCTGAGGTTGAGATATCAAGAAAGTCAACAATTCATCAGAGAA
CAAGACTTATATGCTTTGAAATCTGTTAAGATTCCAGTGAGAAACCATGGGATCCTGATGGAGACCCAC
AAAGAAGTAAACCCCTTCTGAGCCCGTCTCCGAGACCACAGTGACCGTGGAACTGCCAGAGGCAGAC
AGAGCAGGCGCGGGCACCAGTCCCGAGCCGCAACTGATGGGCTTCTTAAGGGGATTGACCAGGAT
ATTGAGCGTGCAGTGCAGTCAAGAAATCTTCTACATGAAAGTTACTGCATGGACACCTCCATCAGCCA
CTGCTCCCGCACCTCCGAAGACGCTATGGATGGTGCAGATTGTGGCATTGAGTGGGAAATGCTGTT
TTCATCATGCTGCTGATTGGTATTGCTTGCCTGTCTTTATTTGGTCTACTTTAAAATACAAGCTAGT
GGTGAGACCCCTAATAGCTTGAACACAAGTGCATCCCCAATGGCTCGATGGCAATGGGTACAGTTCCA
GGGCAAGCCCCCAGACTAGCAGTTGCAGTGCCAGCCGCTCACTTCTGCAGACAGCCAGTTCAGTCAGACC
ACCCAAGCGGGGAGC
ACGCGTACGCGGCCGCTCGAG - GFP Tag - GTTAAAC
```

**Protein Sequence:** >Peptide sequence encoded by RG236793  
 Blue=ORF Red=Cloning site Green=Tag(s)

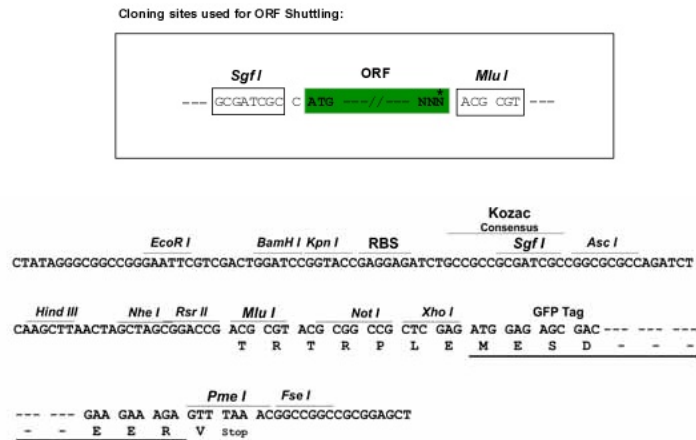
```
MFVANPQARWQLRVAGRGSRVAGRRSRRSLGAEVADIKKVNFIREQDL YALKSVKIPVRNHGILMETH
KELKPLLSPSSETTVTVLPEADRAGAGTGAQAGQLMGFFKIDQDIERAVQSEIFLHESYCMDTSHQP
LLPAPPKTPMDGADCGIQWNAVFIMLLIGIVLPVFYLVYFKIQASGETPNSLNTTVIPNGSMAMGTVP
GQAPRLAVAVPAVTSADSQFSQTTQAGS
TRTRPLEMESDESGLPAMEIECRITGTLNGVEFELVGGEGTPEQGRMTNKMSTKGALTFSPYLLSHV
MGYGFYHFGTYPSGYENPFLHAINNGYTNRIEKYEDGGVLHVSVSYRYEAGRVIGDFKVMGTGFPEL
SVIFTDKIIRSNAIVEHLHPMGDNDLDGSFTRTFSLRDGGYSSVVDSDHMFKSAIHPSILQNGGPMFA
FRVEEDHSNTELGIVEYQHAFKTPDADAGEERY
```



[View online >](#)

Restriction Sites: SgfI-MluI

Cloning Scheme:



ACCN: NM\_001284420

ORF Size: 705 bp

OTI Disclaimer: The molecular sequence of this clone aligns with the gene accession number as a point of reference only. However, individual transcript sequences of the same gene can differ through naturally occurring variations (e.g. polymorphisms), each with its own valid existence. This clone is substantially in agreement with the reference, but a complete review of all prevailing variants is recommended prior to use. [More info](#)

OTI Annotation: This clone was engineered to express the complete ORF with an expression tag. Expression varies depending on the nature of the gene.

Components: The ORF clone is ion-exchange column purified and shipped in a 2D barcoded Matrix tube containing 10ug of transfection-ready, dried plasmid DNA (reconstitute with 100 ul of water).

RefSeq: [NM\\_001284420.1](#), [NP\\_001271349.1](#)

RefSeq Size: 2431 bp

RefSeq ORF: 708 bp

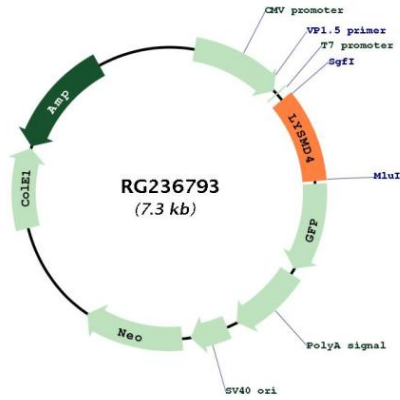
Locus ID: 145748

Cytogenetics: 15q26.3

Protein Families: Transmembrane

MW: 25.9 kDa

Product images:



Circular map for RG236793