

## Product datasheet for **RG236790**

### RhoGDI (ARHGDI) (NM\_001301241) Human Tagged ORF Clone

#### Product data:

Product Type:	Expression Plasmids
Product Name:	RhoGDI (ARHGDI) (NM_001301241) Human Tagged ORF Clone
Tag:	TurboGFP
Symbol:	ARHGDI
Synonyms:	GDIA1; HEL-S-47e; NPHS8; RHOGLI; RHOGLI-1
Mammalian Cell Selection:	Neomycin
Vector:	pCMV6-AC-GFP (PS100010)
E. coli Selection:	Ampicillin (100 ug/mL)
ORF Nucleotide Sequence:	>RG236790 representing NM_001301241. Blue=ORF Red=Cloning site Green=Tag(s)

```
GCTCGTTTAGTGAACCGTCAGAATTTGTAAACGACTCACTATAGGGCGCCGGGAATTCGTCGACTG
GATCCGGTACCGAGGAGATCTGCCGCCCGGATCGCC
ATGGCTGAGCAGGAGCCACAGCCGAGCAGCTGGCCAGATTGCAGCGGAGAACGAGGAGGATGAGCAC
TCGGTCAACTACAAGCCCCGGCCAGAGAGCATCCAGGAGATCCAGGAGCTGGACAAGGACGACGAG
AGCCTGCGAAAGTACAAGGAGGCCCTGCTGGGCCGCGTGGCCGTTTCCGAGACCCCAACGTCCCAAC
GTCGTGGTACTGGCCTGACCCTGGTGTGACGCTCGGCCCGGGCCCCCTGGAGCTGGACCTGACGGGC
GACCTGGAGAGCTTCAAGAAGCAGTCGTTGTGCTGAAGGAGGGTGTGGAGTACCGGATAAAAATCTCT
TTCCGGGTTAACCGAGAGATAGTGTCCGGCATGAAGTACATCCAGCATACTACAGAAAGCGTCAAG
ATTGACAAGACTGACTACATGGTAGGCAGCTATGGGCCCGGGCCGAGGAGTACGAGTTCCTGACCCCC
GTGGAGGAGGCACCAAGGGTCTATCTCCCCGTACACCCGAGGCCCTGGCTTACAGGAGGAGCGGAGC
AGCCATTCTCCAGGCCCGTGGTTGCCCTGGACGTGTGCGTCTGCTGCTCCGGGGTGGAGCTGGGGTG
TGGGATGCACGGCCTCGTGGGGCCGGCCGCTCTCCAGCCCCGCTGCTCCCTGGCCAGCCCCCTTGTG
GCTGTCCGGTCCCGTC
ACGCGTACGCGGCCGCTCGAG - GFP Tag - GTTAAAC
```



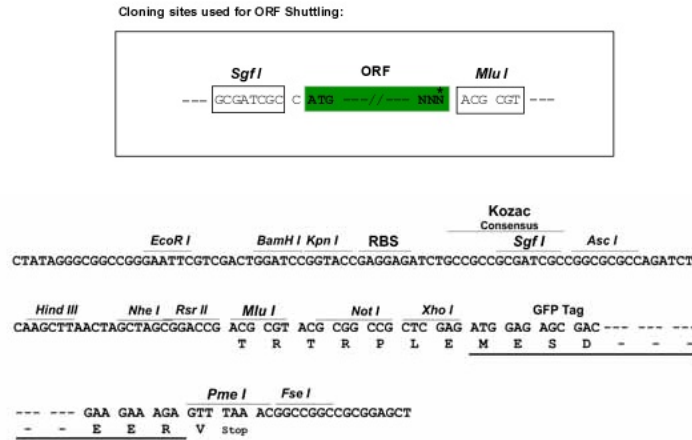
[View online »](#)

**Protein Sequence:** >Peptide sequence encoded by RG236790  
 Blue=ORF Red=Cloning site Green=Tag(s)

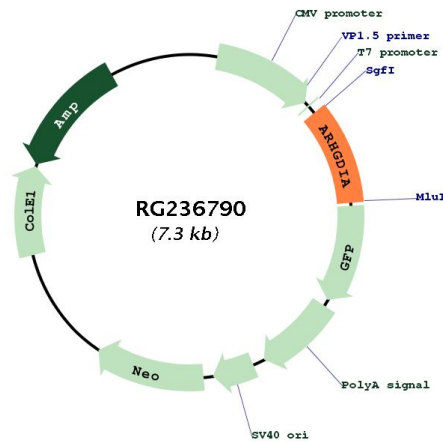
MAEQEPTAEQLAQIAAENEDEHSVNYKPPAQKSIQEIQLDKDDESLRKYKEALLGRVAVSADPNVNP  
 VVVTGLTLVCSSAPGPLELDLTGDLESFKKQSFVLKEGVEYRIKISFRVNREIVSGMKYIQHTYRKGVK  
 IDKTDYMGVSGYPRAEEYFLTPVEEAPKGSISPSHPRPGFRFRERSHSPGPVAVGRVRLLLRGGAGV  
 WDARPRGGRAVLQPRCSLASPLVAVGPV  
 TRTRPLEMESDESGLPAMEIECRITGTLNGVEFELVGGGEGTPEQGRMTNKMSTKGALTFSPYLLSHV  
 MGYGFYHFGTYPSGYENPFLHAINNGGYTNTRIEKYEDGGVLHVSFSYRYEAGRVIGDFKVMGTGFPE  
 SVIFTDKIIRSNAIVEHLHPMGDNDLDGSFTRTFSLRDGGYSSVVDSHMHFKSAIHPSILQNGGPMFA  
 FRRVEEDHSNTELGIVEYQHAFKTPDADAGEERV

**Restriction Sites:** SgfI-MluI

**Cloning Scheme:**



**Plasmid Map:**



**ACCN:** NM\_001301241

<b>ORF Size:</b>	705 bp
<b>OTI Disclaimer:</b>	The molecular sequence of this clone aligns with the gene accession number as a point of reference only. However, individual transcript sequences of the same gene can differ through naturally occurring variations (e.g. polymorphisms), each with its own valid existence. This clone is substantially in agreement with the reference, but a complete review of all prevailing variants is recommended prior to use. <a href="#">More info</a>
<b>OTI Annotation:</b>	This clone was engineered to express the complete ORF with an expression tag. Expression varies depending on the nature of the gene.
<b>Components:</b>	The ORF clone is ion-exchange column purified and shipped in a 2D barcoded Matrix tube containing 10ug of transfection-ready, dried plasmid DNA (reconstitute with 100 ul of water).
<b>RefSeq:</b>	<a href="#">NM_001301241.2</a>
<b>RefSeq Size:</b>	1746 bp
<b>RefSeq ORF:</b>	708 bp
<b>Locus ID:</b>	396
<b>UniProt ID:</b>	<a href="#">P52565</a>
<b>Cytogenetics:</b>	17q25.3
<b>Protein Families:</b>	Druggable Genome
<b>Protein Pathways:</b>	Neurotrophin signaling pathway
<b>MW:</b>	26.3 kDa
<b>Gene Summary:</b>	This gene encodes a protein that plays a key role in the regulation of signaling through Rho GTPases. The encoded protein inhibits the disassociation of Rho family members from GDP (guanine diphosphate), thereby maintaining these factors in an inactive state. Activity of this protein is important in a variety of cellular processes, and expression of this gene may be altered in tumors. Mutations in this gene have been found in individuals with nephrotic syndrome, type 8. Alternate splicing results in multiple transcript variants. [provided by RefSeq, Jul 2014]