

Product datasheet for **RG236784**

PAQR4 (NM_001284511) Human Tagged ORF Clone

Product data:

Product Type: Expression Plasmids
Product Name: PAQR4 (NM_001284511) Human Tagged ORF Clone
Tag: TurboGFP
Symbol: PAQR4
Mammalian Cell Selection: Neomycin
Vector: pCMV6-AC-GFP (PS100010)
E. coli Selection: Ampicillin (100 ug/mL)
ORF Nucleotide Sequence: >RG236784 representing NM_001284511.
 Blue=ORF Red=Cloning site Green=Tag(s)

```
GCTCGTTTAGTGAACCGTCAGAATTTTGTAAACGACTCACTATAGGGCGCCGGGAATTCGTCGACTG
GATCCGGTACCGAGGAGATCTGCCGCCGCGATCGCC
ATGGCGTTCCTGGCCGGCCGCGCTGCTGGACTGGGCCAGCTCGCCGCCGACCTGCAGTTCAATAAG
TTCGTGCTGACCGGGTACCGGCCGCCAGCAGCGGCTCGGGTGCCTGCGCAGCCTCTTCTACCTGCAC
AACGAACGGGCAACATCTACACGCACGGCTCCGTGCTCTACCTCTTTATGTGCCACCAAGGGGGC
AGCGCTGTGTACGCCGGCTCCTCGCCCTGGACATGTGTGGGGTCTGCCTGTCAACACCCTTGGGGCC
CTGCCATCATCCACTGCACCTGGCTGCAGGCCCTGGCTGCGCCCGGCTGCCCTGGTGGGCTACACT
GTGTTGTGGGTGTGGCCGGCTGGCGTGTCTCACCGCCCTCCACCAGTGTGCTCGGCTCCGGGCATT
GGATGGCAGGCTGCTGCCGCCTACTGGTATTTGGGGCCGGGGAGTGGTCTGGGTTACAGGGCTCCA
GGCTCCCTGCCCTGCTACCTGCGCATGGACGACTGGCGCTGCTTGGGGACTGGTAAATGTAGCCCGT
CTGCCCGAGCGTGGGGACCTGGCCGCTTTGACTACTGGGGCACTCCCACCAGATCATGCACCTGCTG
AGCGTGGGCTCCATCCTGCAGCTGCACGCCGGCTCGTGCCCGACCTGCTCTGGGCTGCCACCACGGC
TGTCCCCGGGAC
ACGCGTACGCGGCCGCTCGAG - GFP Tag - GTTAAAC
```

Protein Sequence: >Peptide sequence encoded by RG236784
 Blue=ORF Red=Cloning site Green=Tag(s)

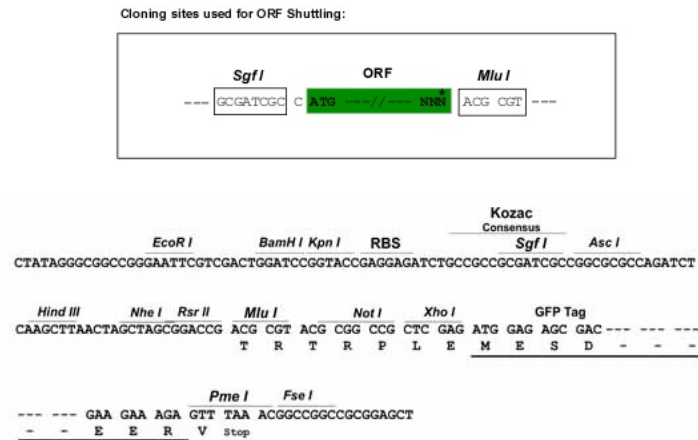
```
MAFLAGPRLLDWASSPPHLQFNKFVLTGYRPASSGSGCLRSLFYLNELGNIYTHGSVL YHLFMCHQGG
SAVYARLLALDMCGVCLVNTLGALPIIHCTLACRPWLRPAALVGYTVLSGVAGWRALTAPSTSARLRAF
GWQAAARLLVFGARGVGLGSGAPGSLPCYL RMDALALLGGLVNVARLPERWGPGRFDYWGNSHQIMHLL
SVGSILQLHAGVVPDLLWAAHACPRD
TRTRPLEMESDESGLPAMEIECRITGTLNGVEFELVGGEGTPEQGRMTNKMSTKGALTFSPYLLSHV
MGYGFYHFGTYPSTYENPFLHAINNGYTNRIEKYEDGGVLHVSFSYRYEAGRVIGDFKVMGTGFPED
SVIFTDKIIRSNAIVEHLHPMGDNDLDGSFTRTFSLRDGGYSSVVDSDMHFKSAIHPISILQNGGPMFA
FRRVEEDHSNTELGIVEYQHAFKTPDADAGEERY
```



[View online >](#)

Restriction Sites: SgfI-MluI

Cloning Scheme:



ACCN: NM_001284511

ORF Size: 702 bp

OTI Disclaimer: The molecular sequence of this clone aligns with the gene accession number as a point of reference only. However, individual transcript sequences of the same gene can differ through naturally occurring variations (e.g. polymorphisms), each with its own valid existence. This clone is substantially in agreement with the reference, but a complete review of all prevailing variants is recommended prior to use. [More info](#)

OTI Annotation: This clone was engineered to express the complete ORF with an expression tag. Expression varies depending on the nature of the gene.

Components: The ORF clone is ion-exchange column purified and shipped in a 2D barcoded Matrix tube containing 10ug of transfection-ready, dried plasmid DNA (reconstitute with 100 ul of water).

RefSeq: [NM_001284511.2](#)

RefSeq Size: 2694 bp

RefSeq ORF: 705 bp

Locus ID: 124222

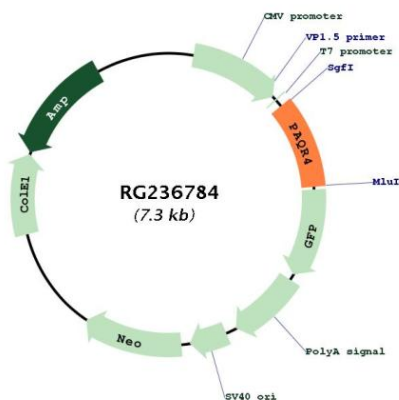
UniProt ID: [Q8N4S7](#)

Cytogenetics: 16p13.3

Protein Families: Druggable Genome, Transmembrane

MW: 25.6 kDa

Product images:



Circular map for RG236784