

Product datasheet for **RG236780**

DYRK4 (NM_001282285) Human Tagged ORF Clone

Product data:

Product Type: Expression Plasmids
Product Name: DYRK4 (NM_001282285) Human Tagged ORF Clone
Tag: TurboGFP
Symbol: DYRK4
Mammalian Cell Selection: Neomycin
Vector: pCMV6-AC-GFP (PS100010)
E. coli Selection: Ampicillin (100 ug/mL)
ORF Nucleotide Sequence: >RG236780 representing NM_001282285.
 Blue=ORF Red=Cloning site Green=Tag(s)

```
GCTCGTTTAGTGAACCGTCAGAATTTTGTAAACGACTCACTATAGGGCGGCCGGGAATTCGTCGACTG
GATCCGGTACCGAGGAGATCTGCCGCCGCGATCGCC
ATGTGGAGCCTGGGCTGCATCACGGCGGAGTTGTACACGGGCTACCCCTGTTCCCGGGGAGAATGAG
GTGGAGCAGCTGGCCTGCATCATGGAGGTGCTGGGTCTGCCGCCAGCCGGCTTCATTAGACAGCCTCC
AGGAGACAGACATTCTTTGATCCAAAGGTTTTCTAAAAATATAACCAACAACAGGGGGAAAAAAGA
TACCCAGATTCCAAGGACCTCACGATGGTGCTGAAAACCTATGACACCAGCTTCTGGACTTTCTCAGA
AGGTGTTTGGTATGGGAACCTTCTTTCGCATGACCCCGGACCAGGCCCTCAAGCATGCTTGATTATCAT
CAGTCTCGGAACCTCAAGCCACAGCCAGGCCAGCCCTGAGGAAATCCAATTCCTTTTCCCCTCT
GAGACAAGGAAGGACAAGGTTCAAGGCTGTCATCACTCGAGCAGAAAAGCAGATGAGATCACCAAAGAG
ACTACAGAGAAAACAAAAGATAGCCCCACGAAGCATGTTACAGATTACAGGTGATCAGCAGGACTGTCTC
CAGCACGGAGCTGACACTGTTACAGCTGCCTCAACTGGTAGACGCTCCCAAGAAGTCAGAGGCAGCTGTC
GGGGCGGAGGTGTCCATGACCTCCCAGGACAGAGCAAAAACCTTCTCCCTCAAGAACACAAACGTTTTA
CCCCCTATTGTA
ACGCGTACGCGGCCGCTCGAG - GFP Tag - GTTAAAC
```

Protein Sequence: >Peptide sequence encoded by RG236780
 Blue=ORF Red=Cloning site Green=Tag(s)

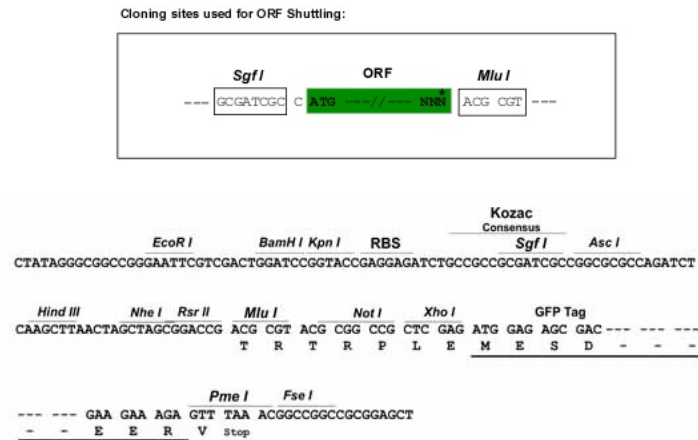
```
MWSLGCITAEIYTGYPFGENEVEQLACIMEVLGLPPAGFIQTASRRQTFDQSKGFPKNTNRRGKRR
YPSKDLTMVLKTYDTSFLDFLRRLVWEPRLMTPDQALKHAWIHQSRNLKPQPRPQTLRKSNSFFPS
ETRKDKVQGHSSRKADEITKETTEKTKDSPTKHVQHSQDQDCLQHGADTVQLPQLVDAPKKSEAAV
GAEVSMSPGQSKNFSKNTNVLPIV
TRTRPLEMESDESGLPAMEIECRITGTLNGVEFELVGGEGTPEQGRMTNKMSTKGALTFSPYLLSHV
MGYGFYHFGTYPSTYENPFLHAINNGYTNRIEKYEDGGVLHVSFSYRYEAGRVIGDFKVMGTGFPED
SVIFTDKIIRSNAIVEHLHPMGDNDLDGSFTRTFSLRDGGYSSVVDSDHMFKSAIHPSILQNGGPMFA
FRRVEEDHSNTELGIVEYQHAFKTPDADAGEERV
```



[View online >](#)

Restriction Sites: SgfI-MluI

Cloning Scheme:



ACCN: NM_001282285

ORF Size: 702 bp

OTI Disclaimer: The molecular sequence of this clone aligns with the gene accession number as a point of reference only. However, individual transcript sequences of the same gene can differ through naturally occurring variations (e.g. polymorphisms), each with its own valid existence. This clone is substantially in agreement with the reference, but a complete review of all prevailing variants is recommended prior to use. [More info](#)

OTI Annotation: This clone was engineered to express the complete ORF with an expression tag. Expression varies depending on the nature of the gene.

Components: The ORF clone is ion-exchange column purified and shipped in a 2D barcoded Matrix tube containing 10ug of transfection-ready, dried plasmid DNA (reconstitute with 100 ul of water).

RefSeq: [NM_001282285.1](#), [NP_001269214.1](#)

RefSeq Size: 968 bp

RefSeq ORF: 705 bp

Locus ID: 8798

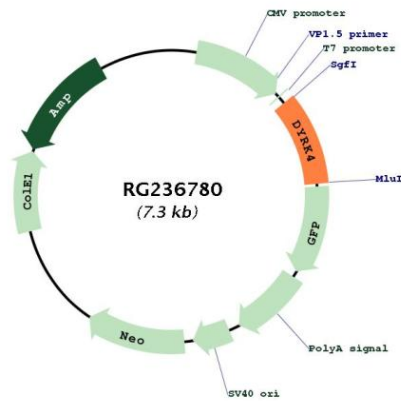
Cytogenetics: 12p13.32

Protein Families: Druggable Genome, Protein Kinase

MW: 26.8 kDa

Gene Summary:

This gene encodes an enzyme that belongs to a conserved family of serine/threonine protein kinases. Members of this dual specificity kinase family are thought to function in the regulation of cell differentiation and proliferation, survival, and in development. Alternate splicing results in multiple transcript variants. Additional alternatively spliced transcript variants of this gene have been described, but their full-length nature is not known. [provided by RefSeq, Aug 2013]

Product images:

Circular map for RG236780