

Product datasheet for **RG236776**

PAQR6 (NM_001272108) Human Tagged ORF Clone

Product data:

Product Type:	Expression Plasmids
Product Name:	PAQR6 (NM_001272108) Human Tagged ORF Clone
Tag:	TurboGFP
Symbol:	PAQR6
Synonyms:	PRdelta
Mammalian Cell Selection:	Neomycin
Vector:	pCMV6-AC-GFP (PS100010)
E. coli Selection:	Ampicillin (100 ug/mL)
ORF Nucleotide Sequence:	>RG236776 representing NM_001272108. Blue=ORF Red=Cloning site Green=Tag(s)

```
GCTCGTTTAGTGAACCGTCAGAATTTGTAAATACGACTCACTATAGGGCGGCCGGGAATTCGTCGACTG
GATCCGGTACCGAGGAGATCTGCCGCCGCGATCGCC
ATGCTCAGTCTCAAGCTGCCCAACTTCTTCAAGTCCACCAGGTCCCCGGGTGTTCTGGGAAGATGGC
ATCATGTCTGGTACCGCCGCCACCAGCTCGGCTTTGGACTGTGTCTCAGCTCCTTCCAGATGACC
AACGAGACGGTCAACATCTGGACTCACTTCTGCCACCTGTTTCTGGAGCTGGAAAGCCTGGGCTC
AGTAAGGTCTCCGCACAGGAGCCTTCGCCTATCCATTCTGTTTCGACAACCTCCCCTCTTTATCGG
CTCGGGCTGTGTGGGCAGGGCCACGGCTGTGGCAGGAGGCCCTGAGCACCAGCCATGGCTACCAT
CTCTTCTGCGCGTGTCTACTGGCTTCTTTCGCCTCCCACCTGCCTGAAAGGCTGGCACCAGGACGC
TTTGATTACATCGGCCACAGCCACCAGTTATTCCACATCTGTGCAGTGTGGGCACCCACTTCCAGCTG
GAGGCAGTGTGGCTGATATGGGATCACGCAGAGCCTGGCTGGCCACACAGGAACCTGCCCTGGGCTG
GCAGGCACAGTGGCCCACTGGTCTTGGCTGCAGCTGGGAACCTACTCATTATTGCTGCTTTCACAGCC
ACCCTGCTTCGGGCCCCAGTACATGCCCTCTGCTGCAGGGTGGCCCACTGGAGGGGGTACCCAGGCC
AAACAACAG
ACGCGTACGCGGCCGCTCGAG - GFP Tag - GTTAAAC
```



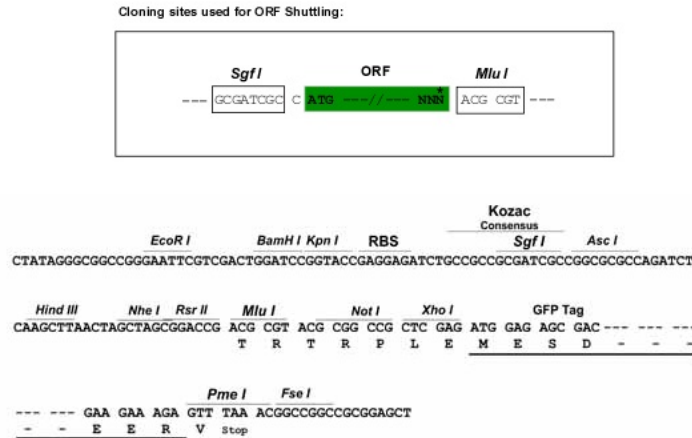
[View online »](#)

Protein Sequence: >Peptide sequence encoded by RG236776
 Blue=ORF Red=Cloning site Green=Tag(s)

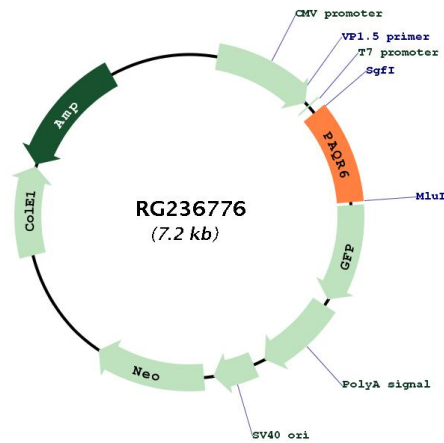
MLSLKLPQLLVHQQVPRVFWEDGIMSGYRRPTSSALDCVLSFQMTNETVNIWTHFLPTCFLEESPLG
 SKVLRGTGAFAYPFLFDNLPLFYRLGLCWGRGHGCGQEALSTSHGYHLFCALLTGFLFASHLPERLAPGR
 FDYIGHSHQLFHICAVLGFTHFQLEAVLADMGSRRAWLATQEPALGLAGTVATLVAAAAGNLLIIAAFTA
 TLLRAPSTCPPLLQGGPLEGGTQAKQQ
 TRTRPLEMESDESGLPAMEIECRITGTLNGVEFELVGGGEGTPEQGRMTNKMSTKGALTFSPYLLSHV
 MGYGFYHFGTYPSGYENPFLHAINNGGYTNTRIEKYEDGGVLHVSFSYRYEAGRVIGDFKVMGTGFPED
 SVIFTDKIIRSNAIVEHLHPMGDNDLDGSFTRTFSLRDGGYSSVVDSHMHFKSAIHPSILQNGGPMFA
 FRRVEEDHSNTELGIVEYQHAFKTPDADAGEERV

Restriction Sites: SgfI-MluI

Cloning Scheme:



Plasmid Map:



ACCN: NM_001272108

ORF Size:	699 bp
OTI Disclaimer:	The molecular sequence of this clone aligns with the gene accession number as a point of reference only. However, individual transcript sequences of the same gene can differ through naturally occurring variations (e.g. polymorphisms), each with its own valid existence. This clone is substantially in agreement with the reference, but a complete review of all prevailing variants is recommended prior to use. More info
OTI Annotation:	This clone was engineered to express the complete ORF with an expression tag. Expression varies depending on the nature of the gene.
Components:	The ORF clone is ion-exchange column purified and shipped in a 2D barcoded Matrix tube containing 10ug of transfection-ready, dried plasmid DNA (reconstitute with 100 ul of water).
RefSeq:	NM_001272108.2
RefSeq Size:	1696 bp
RefSeq ORF:	702 bp
Locus ID:	79957
UniProt ID:	Q6TCH4
Cytogenetics:	1q22
Protein Families:	Druggable Genome, Transmembrane
MW:	25.9 kDa
Gene Summary:	Plasma membrane progesterone (P4) receptor coupled to G proteins (PubMed:23763432, PubMed:23161870). Seems to act through a G(s) mediated pathway (PubMed:23161870). Involved in neurosteroid inhibition of apoptosis (PubMed:23161870). May be involved in regulating rapid P4 signaling in the nervous system (PubMed:23763432). Also binds dehydroepiandrosterone (DHEA), pregnanolone, pregnenolone and allopregnanolone (PubMed:23763432, PubMed:23161870).[UniProtKB/Swiss-Prot Function]