

## Product datasheet for **RG236771**

### TPD52 (NM\_001287143) Human Tagged ORF Clone

#### Product data:

Product Type:	Expression Plasmids
Product Name:	TPD52 (NM_001287143) Human Tagged ORF Clone
Tag:	TurboGFP
Symbol:	TPD52
Synonyms:	D52; hD52; N8L; PC-1; PrLZ
Mammalian Cell Selection:	Neomycin
Vector:	pCMV6-AC-GFP (PS100010)
E. coli Selection:	Ampicillin (100 ug/mL)
ORF Nucleotide Sequence:	>RG236771 representing NM_001287143. Blue=ORF Red=Cloning site Green=Tag(s)

```
GCTCGTTTAGTGAACCGTCAGAATTTGTAAACGACTCACTATAGGGCGCCGGGAATTCGTCGACTG
GATCCGGTACCGAGGAGATCTGCCGCCGCGATCGCC
ATGGATTGTAGAGAGATGGACTTATATGAGGACTACCACTCCCGTTTGATTTTGATGCAGGAGTGAAC
AAAAGCTATCTCTACTTGTCTCTAGTGGAAATTCATCTCCACCCGGATCACCTACTCTTCAGAAATTT
GGTCTGCTGAGAACAGACCCAGTCCCTGAGGAAGGAGAAGATGTTGCTGCCACGATCAGTGCCACAGAG
ACCCTCTCGAAGAGGAGCAGGAAGAGCTAAGAAGAGAACTTGCAAAGGTAGAAGAAGAAATCCAGACT
CTGTCTCAAGTGTAGCAGCAAAAGAGAAGCATCTAGCAGAGATCAAGCGGAACTTGAATCAATTCT
CTACAGGAACTAAAACAGAACATTGCCAAAGGGTGGCAAGACGTGACAGCAACATCTGCTTACAAGAAG
ACATCTGAAACCTTATCCAGGCTGGACAGAAGGCCTCAGCTGCTTTTTGCTCTGTTGGCTCAGTCATC
ACCAAAAAGCTGGAAGATGTAAAATTGCAAGCCTTTTCACATTCTTTAGAACTCCCAACTTTTAAA
TCATTTGAAGAAAAGGTGAAAACCTTAAAGTCTAAAGTAGGGGGAACCAAGCCTGCTGGTGGTGATTTT
GGAGAAGTCTTGAATTCGGCTGCAATGCTAGTGCCACCACCACGGAGCCTCTTCAGAAAAGACACAG
GAGAGCCTG
ACGCGTACGCGGCCGCTCGAG - GFP Tag - GTTAAAC
```



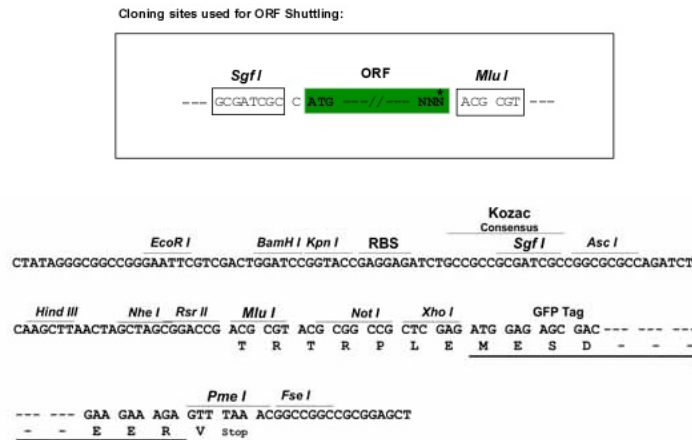
[View online »](#)

**Protein Sequence:** >Peptide sequence encoded by RG236771  
 Blue=ORF Red=Cloning site Green=Tag(s)

MDCREMDLYEDYQSPFFDAGVNSYLYLSPSGNSSPPGSPTLQKFGLLRTPVPEEGEDVAATISATE  
 TLSEEEQEELRRELAKVEEIIQTL SQVLAKEKHLAEIKRKLGINSLQELKQNIKQWQDVTATSAYKK  
 TSETLSQAGQKASAAFSSVGSVITKKLEDVKLQAFSHSFRNSPTFKSFEEKVENLKSXVGGTKPAGGDF  
 GEVLNSAANASATTEPLPEKTQESL  
 TRTRPLEMESDESGLPAMEIECRITGTLNGVEFELVGGEGTPEQGRMTNKMSTKGALTFSPYLLSHV  
 MGYGFYHFGTYPSGYENPFLHAINNGGYTNTRIEKYEDGGVLHVSFSYRYEAGRVIGDFKVMGTGFPEP  
 SVIFTDKIIRS NATVEHLHPMGDNDLDGSFTRTFSLRDGGYSSVVD SHMHFKSAIHPSILQNGGPMFA  
 FRRVEEDHSNTELGIVEYQHAFKTPDADAGEERV

**Restriction Sites:** SgfI-MluI

**Cloning Scheme:**



**ACCN:** NM\_001287143

**ORF Size:** 699 bp

**OTI Disclaimer:** The molecular sequence of this clone aligns with the gene accession number as a point of reference only. However, individual transcript sequences of the same gene can differ through naturally occurring variations (e.g. polymorphisms), each with its own valid existence. This clone is substantially in agreement with the reference, but a complete review of all prevailing variants is recommended prior to use. [More info](#)

**OTI Annotation:** This clone was engineered to express the complete ORF with an expression tag. Expression varies depending on the nature of the gene.

**Components:** The ORF clone is ion-exchange column purified and shipped in a 2D barcoded Matrix tube containing 10ug of transfection-ready, dried plasmid DNA (reconstitute with 100 ul of water).

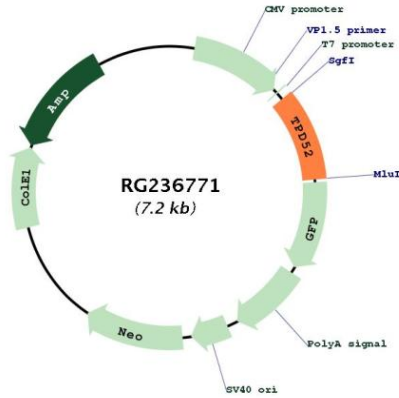
**RefSeq:** [NM\\_001287143.2](#)

**RefSeq Size:** 4340 bp

**RefSeq ORF:** 702 bp

Locus ID: 7163  
 UniProt ID: [P55327](#)  
 Cytogenetics: 8q21.13  
 MW: 25.9 kDa

**Product images:**



Circular map for RG236771