

Product datasheet for **RG236759**

DCAKD (NM_001288655) Human Tagged ORF Clone

Product data:

Product Type: Expression Plasmids
Product Name: DCAKD (NM_001288655) Human Tagged ORF Clone
Tag: TurboGFP
Symbol: DCAKD
Mammalian Cell Selection: Neomycin
Vector: pCMV6-AC-GFP (PS100010)
E. coli Selection: Ampicillin (100 ug/mL)
ORF Nucleotide Sequence: >RG236759 representing NM_001288655.
 Blue=ORF Red=Cloning site Green=Tag(s)

```
GCTCGTTTAGTGAACCGTCAGAATTTTGTAAACGACTCACTATAGGGCGGCCGGGAATTCGTCGACTG
GATCCGGTACCGAGGAGATCTGCCGCCGCGATCGCC
ATGTTTCTGGTGGGCTGACAGGGGGCATTGCCTCAGGCAAGAGCTCAGTGATCCAGGTGTTCCAGCAG
CTGGGCTGTGCGGTGATTGACGTGGACGTGATGGCCCGGCACGTCGTGCAGCCAGGATACCTGCCAC
CGGCGCATCGTAGAGGTCTTCGGCACTGAGGTCTTGCTGGAGAATGGCGACATAAATCGCAAGGTCTG
GGGACCTGATCTTTAACAGCCTGACCGGGCGGACGCTGCTCATCGCCATCACCCACCCGAGATTCCG
AAGGAGATGATGAAGGAGACGTTCAAGTACTTCTCCGGGGATACCGCTACGTGATTCTGGATATCCCC
CTGCTGTTTGAGACCAAGAAGTTGCTCAAGTACATGAAGCACCGTGGTAGTATACTGCCACCGGGAC
ACACAGCTGGCACGGCTGATGCGGCGGAACAGCCTGAACCGCAAGGACGACAGAGGCCCGCATCAATGCC
CAGCTGCCCTGACAGACAAGGCCCGCATGGCCCGCCATGTCCTAGACAACCTCGGGCGAGTGGAGTGTC
ACCAAACGCCAGGTATCCTCTTGACACTGAGCTGGAGCGCTCCCTGGAGTACCTGCCGCTGAGGTTT
GGGGTCTCACAGGGCTCGTGCCATTGCCAGCCTCCTTACCTGCTCACCCACTACCTTCTGCCTTAC
GCC
ACGCGTACGCGGCCGCTCGAG - GFP Tag - GTTAAAC
```

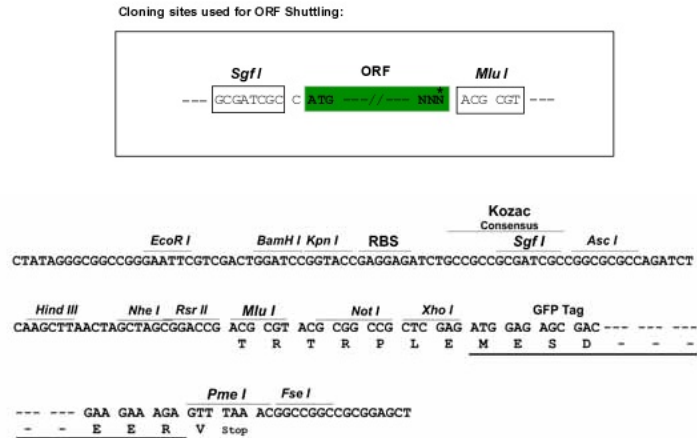
Protein Sequence: >Peptide sequence encoded by RG236759
 Blue=ORF Red=Cloning site Green=Tag(s)

```
MFLVGLTGGIASGKSSVIQVFQQLGCAVIDVDVMARHVQPGYPAHRRIVEVFGTEVLLLENGDINRKVL
GDILFNQPDRRQLLIAITHPEIRKEMMKETFKYFLRGYRVILDIPLLFETKLLKMKHTVVVYCDRD
TQLARLMRRNSLNRKDAEARINAQLPLTDKARMARHVLDNSGEWSVTKRQVILLHTELSLEYLPLRF
GVLTLAAIASLLYLLTHYLLPYA
TRTRPLEMESDESGLPAMEIECRITGTLNGVEFELVGGEGTPEQGRMTNKMSTKGALTFSPYLLSHV
MGYGFYHFGTYPSGYENPFLHAINNGGYNTRIEKYEDGGVLHVSFSYRYEAGRVIGDFKVMGTGFPED
SVIFTDKIIIRSNAVTEHLHPMGDNDLDGSFTRTFSLRDGGYSSVVDSDMHFKSAIHPISILQNGGPMFA
FRRVEEDHSNTELGIVEYQHAFKTPDADAGEERV
```

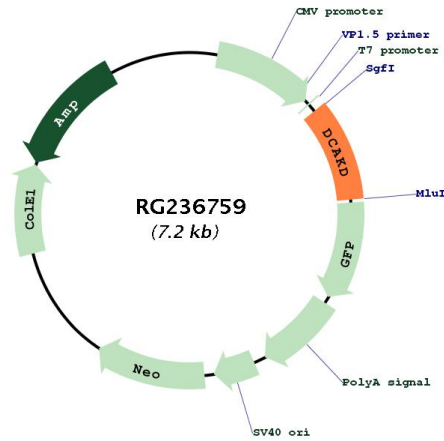


Restriction Sites: SgfI-MluI

Cloning Scheme:



Plasmid Map:



ACCN: NM_001288655

ORF Size: 693 bp

OTI Disclaimer: The molecular sequence of this clone aligns with the gene accession number as a point of reference only. However, individual transcript sequences of the same gene can differ through naturally occurring variations (e.g. polymorphisms), each with its own valid existence. This clone is substantially in agreement with the reference, but a complete review of all prevailing variants is recommended prior to use. [More info](#)

OTI Annotation: This clone was engineered to express the complete ORF with an expression tag. Expression varies depending on the nature of the gene.

Components:	The ORF clone is ion-exchange column purified and shipped in a 2D barcoded Matrix tube containing 10ug of transfection-ready, dried plasmid DNA (reconstitute with 100 ul of water).
RefSeq:	<u>NM_001288655.1</u> , <u>NP_001275584.1</u>
RefSeq Size:	2072 bp
RefSeq ORF:	696 bp
Locus ID:	79877
UniProt ID:	<u>Q8WVC6</u>
Cytogenetics:	17q21.31
Protein Families:	Transmembrane
MW:	26.5 kDa