

Product datasheet for **RG236757**

NQO2 (NM_001290221) Human Tagged ORF Clone

Product data:

Product Type:	Expression Plasmids
Product Name:	NQO2 (NM_001290221) Human Tagged ORF Clone
Tag:	TurboGFP
Symbol:	NQO2
Synonyms:	DHQV; DIA6; NMOR2; QR2
Mammalian Cell Selection:	Neomycin
Vector:	pCMV6-AC-GFP (PS100010)
E. coli Selection:	Ampicillin (100 ug/mL)
ORF Nucleotide Sequence:	>RG236757 representing NM_001290221. Blue=ORF Red=Cloning site Green=Tag(s)

```
GCTCGTTTAGTGAACCGTCAGAATTTGTAAATACGACTCACTATAGGGCGGCCGGGAATTCGTCGACTG
GATCCGGTACCGAGGAGATCTGCCGCCGCGATCGCC
ATGGCAGGTAAGAAAGTACTCATTGTCTATGCACACCAGGAACCCAAGTCTTTCAACGGATCCTTGAAG
AATGTGGCTGTAGATGAAGTACTGAGCAGGCAGGGCTGCACCGTCACAGTGTCTGATTTGTATGCCATGAAC
CTTGAGCCGAGGGCCACAGACAAAGATACACTGGTACTCTTTCTAATCCTGAGGTTTTCAATTATGGA
GTGGAACCCACGAAGCCTACAAGCAAAGTCTCTGGCTAGCGACATCACTGATGAGCAGAAAAAGGTT
CGGGAGGCTGACCTAGTGATATTTCAAGTCCCGCTGTACTGGTTCAGCGTCCAGCCATCCTGAAGGTC
TGGATGGATAGGGTGTGTGCCAGGGCTTTGCCTTTGACATCCCAGGATTCTACGATTCCGTTTTGCTC
CAGGGTAAACTAGCGCTCCTTTCCGTAACACGGGAGGCACGGCCGAGATGTACACGAAGACAGGAGTC
AATGGAGATTCTCGATACTTCTGTGGCCACTCCAGCATGGCACATTACACTTCTGTGGATTTAAAGTC
CTTGCCCCCTCAGATCAGCTTTGCTCCTGAAATTGCATCCGAAGAAGAAAGAAAGGGGATGGTGGCTGCG
TGGTCCCAGAGGCTGCAGACCATCTGGAAGGAAGAGCCATCCCCTGCACAGCCCACTGGCACTTCGGG
CAA
ACGCGTACGCGGCCGCTCGAG - GFP Tag - GTTTAAAC
```



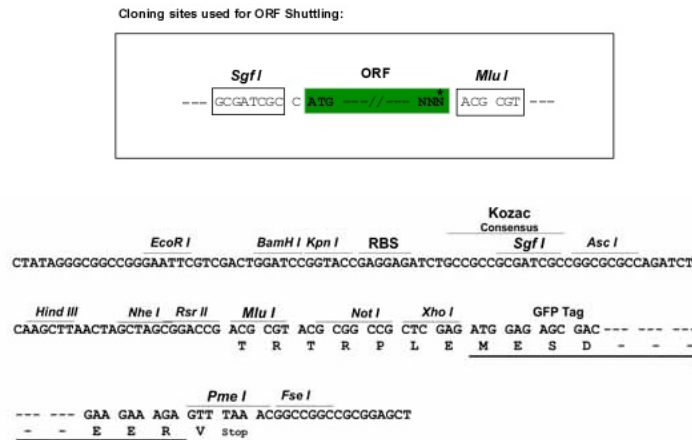
[View online »](#)

Protein Sequence: >Peptide sequence encoded by RG236757
 Blue=ORF Red=Cloning site Green=Tag(s)

MAGKKVLIVYAHQEPKSFNGSLKNVAVDEL SRQGCTVTVSDLYAMNLEPRATDKDITGTL SNPEVFNYG
 VETHEAYKQ RSLASDITDEQKKVREADL VIFQFPLYWFSVPAILKGWMDRVLCQGFADFIPGFYDSGLL
 QGKLALLSVTTGGTAEMYTKTG VNGDSRYFLWPLQHGLHFHFCGFKVLAPQISFAPEIASEEERKGMVAA
 WSQRLQTIWKEEIPCTAHWHFGQ
 TRTRPLEMESDESGLPAMEIECRITGTLNGVEFELVGGEGTPEQGRMTNKMKSTKGALTFSPYLLSHV
 MGYGFYHFGTYPSGYENPFLHAINNGGYTNTRIEKYEDGGVLHVSFSYRYEAGRVIGDFKVMGTGFPED
 SVIFTDKIIRS NATVEHLHPMGDNDLDGSFTRTFSLRDGGYSSVVD SHMHFKSAIHPSILQNGGPMFA
 FRRVEEDHSNTELGIVEYQHAFKTPDADAGEERV

Restriction Sites: SgfI-MluI

Cloning Scheme:



ACCN: NM_001290221

ORF Size: 693 bp

OTI Disclaimer: The molecular sequence of this clone aligns with the gene accession number as a point of reference only. However, individual transcript sequences of the same gene can differ through naturally occurring variations (e.g. polymorphisms), each with its own valid existence. This clone is substantially in agreement with the reference, but a complete review of all prevailing variants is recommended prior to use. [More info](#)

OTI Annotation: This clone was engineered to express the complete ORF with an expression tag. Expression varies depending on the nature of the gene.

Components: The ORF clone is ion-exchange column purified and shipped in a 2D barcoded Matrix tube containing 10ug of transfection-ready, dried plasmid DNA (reconstitute with 100 ul of water).

RefSeq: [NM_001290221.1](#), [NP_001277150.1](#)

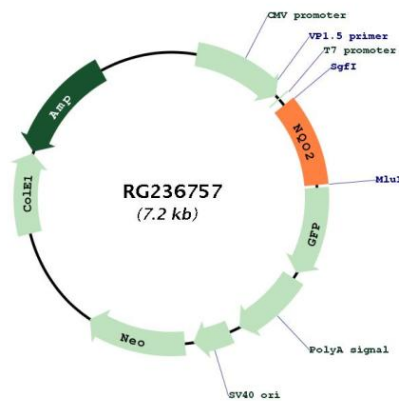
RefSeq Size: 1787 bp

RefSeq ORF: 696 bp

Locus ID: 4835
UniProt ID: [P16083](#)
Cytogenetics: 6p25.2
MW: 26.4 kDa

Gene Summary: This gene encodes a member of the thioredoxin family of enzymes. It is a cytosolic and ubiquitously expressed flavoprotein that catalyzes the two-electron reduction of quinone substrates and uses dihydronicotinamide riboside as a reducing coenzyme. Mutations in this gene have been associated with neurodegenerative diseases and several cancers. Alternative splicing results in multiple transcript variants. [provided by RefSeq, Mar 2014]

Product images:



Circular map for RG236757