

Product datasheet for **RG236749**

ANKRD42 (NM_001300976) Human Tagged ORF Clone

Product data:

Product Type:	Expression Plasmids
Product Name:	ANKRD42 (NM_001300976) Human Tagged ORF Clone
Tag:	TurboGFP
Symbol:	ANKRD42
Synonyms:	PPP1R79; SARP
Mammalian Cell Selection:	Neomycin
Vector:	pCMV6-AC-GFP (PS100010)
E. coli Selection:	Ampicillin (100 ug/mL)
ORF Nucleotide Sequence:	>RG236749 representing NM_001300976. Blue=ORF Red=Cloning site Green=Tag(s)

```
GCTCGTTTAGTGAACCGTCAGAATTTTGTAAACGACTCACTATAGGGCGGCCGGGAATTCGTCGACTG
GATCCGGTACCGAGGAGATCTGCCGCCGCGATCGCC
ATGCCCGGGTGGCCAATTCAGGCCCTCCACTTCCTCTAGGGAGACTGCAAACCCTGTTCCAGGAAG
AAGGTGCATTTTGGCAGCATACATGATGCAGTACGAGCTGGAGATGTAAGCAGCTTTCAGAAATAGTG
GTACGTGGAGCCAGCATTAACTGAACCTGATGTTCTCCATAAGTTTACCCCTTACATTGGGCAGCACAT
TCTGGAAGTTTGGAGTGTCTTCATTGGCTGCTCTGGCATGGAGCTGATATCACACACGTAACAACGAGA
GGTTGGACAGCATCTCACATAGCTGCAATCAGGGGTGAGGATGCTTGTGTACAGGCTCTTATAATGAAT
GGAGCAAATCTGACAGCCAGGATGACCGGGATGCACTCCTTTACATCTTGCTGCAACTCATGGACAT
TCTTTCACTTTACAAATAATGCTCCGAAGTGGAGTGGATCCCAGTGTGACTGATAAGAGAGAATGGAGA
CCTGTGCATTATGCAGCTTTTCATGGGCGGCTTGCTGCTTGCAACTTCTTGTTAAATGGGGTTGTAGC
ATAGAAGATGTGGACTACAATGGAACCTTCCAGGTGGCAGCCATCTCCTCCTCAGCATCATGGCCACC
CTCAGACCCCTTGTGAAGCCCAGGATCATCAAAAAGAGAACTAAGAAGTTCTTCCGGCACCAGACTGAC
ACGCGTACGCGGCCGCTCGAG - GFP Tag - GTTTAAAC
```



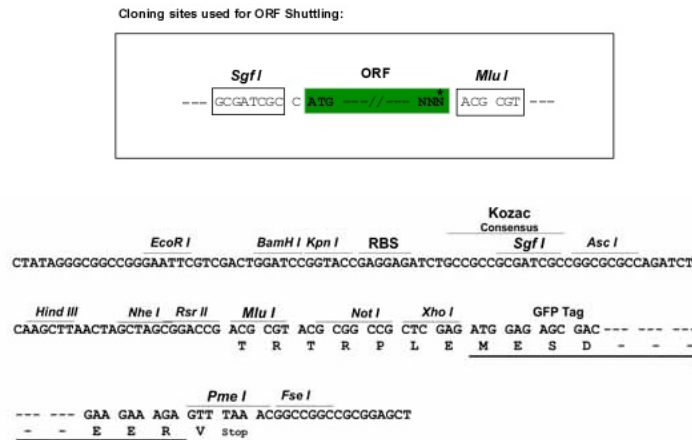
[View online »](#)

Protein Sequence: >Peptide sequence encoded by RG236749
 Blue=ORF Red=Cloning site Green=Tag(s)

MPGVANS~~GP~~STSSRETANPCSRKKVHFGSIHDAVRAGDVKQLSEIVVRGASINELDVLHKFTPLHWAH
 SGLSECLHWLLWHGADITHVTTTRGWTASHIAAIRGQDACVQALIMNGANLTAQDDRGCTPLHLAATHGH
 SFTLQIMLRSGVDPSVTDKREWRPVHYAAFHGRLGCLQLLVKWCSEIDVDYNGNLPGGSHLLLSIMAT
 LRPLVKPRIIKKRTKKFFRHQTD
 TRTRPLEMESDESGLPAMEIECRITGTLNGVEFELVGGEGTPEQGRMTNKMKSTKGALTFSPYLLSHV
 MGYGFYHFGTYPSGYENPFLHAINNGGYTNTRIEKYEDGGVLHVSFSYRYEAGRVI~~GD~~FKVMGTGFPE
 SVIFTDKIIRS~~NAT~~VEHLHPMGDNDLDGSFTRTFSLRDGGYSSVVD~~SH~~MHFKSAIHPSILQNGGPMFA
 FRRVEEDHSNTELGIVEYQHAFKTPDADAGEERV

Restriction Sites: SgfI-MluI

Cloning Scheme:



ACCN: NM_001300976

ORF Size: 690 bp

OTI Disclaimer: The molecular sequence of this clone aligns with the gene accession number as a point of reference only. However, individual transcript sequences of the same gene can differ through naturally occurring variations (e.g. polymorphisms), each with its own valid existence. This clone is substantially in agreement with the reference, but a complete review of all prevailing variants is recommended prior to use. [More info](#)

OTI Annotation: This clone was engineered to express the complete ORF with an expression tag. Expression varies depending on the nature of the gene.

Components: The ORF clone is ion-exchange column purified and shipped in a 2D barcoded Matrix tube containing 10ug of transfection-ready, dried plasmid DNA (reconstitute with 100 ul of water).

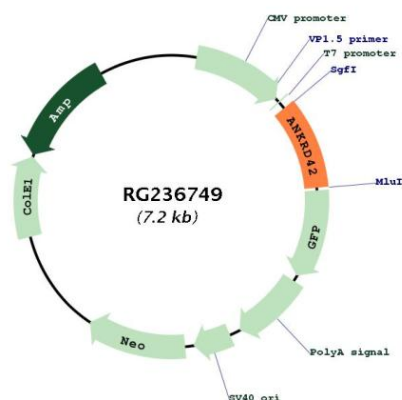
RefSeq: [NM_001300976.2](#)

RefSeq Size: 3758 bp

RefSeq ORF: 693 bp

Locus ID: 338699
UniProt ID: [Q8N9B4](#)
Cytogenetics: 11q14.1
MW: 25.8 kDa

Product images:



Circular map for RG236749