

## Product datasheet for **RG236720**

### SLC25A45 (NM\_001300820) Human Tagged ORF Clone

#### Product data:

**Product Type:** Expression Plasmids  
**Product Name:** SLC25A45 (NM\_001300820) Human Tagged ORF Clone  
**Tag:** TurboGFP  
**Symbol:** SLC25A45  
**Mammalian Cell Selection:** Neomycin  
**Vector:** pCMV6-AC-GFP (PS100010)  
**E. coli Selection:** Ampicillin (100 ug/mL)  
**ORF Nucleotide Sequence:** >RG236720 representing NM\_001300820.  
 Blue=ORF Red=Cloning site Green=Tag(s)

```
GCTCGTTTAGTGAACCGTCAGAATTTTGTAAACGACTCACTATAGGGCGCCGGGAATTCGTCGACTG
GATCCGGTACCGAGGAGATCTGCCGCCCGGATCGCC
ATGCCGGTGGAGGAATTTGTGGCTGGCTGGATCTCTGGCGCTCTGGGCTTGGTCCTGGGACACCCGTTT
GACACTGTAAAGGTGAGGCTGCAGACCCAGACCACCTACCGGGGCATCGTTGATTGCATGGTCAAGATT
TACCGCCATGAGTCCGCCTACTGTCTGGCTCCTTTTGACCTCATCAAAGTCCGGCTACAAAACAGACA
GAGCCAAGGGCCAGCCAGGGAGCCCCACCCGGTACCAGGGGCCGTGCACTGTGCAGCCTCCATC
TTCCGGGAGGAGGGCCCCGGGGCTGTCCGAGGAGCCTGGGCCCTGACGCTGAGGGACACCCCAAG
GTGGGGTACTACTCATCACCTATGAAGGGCTCTGTCGCCAGTACACACCAGAAGGCCAGAATCCACAG
TCAGCCACGGTGTGTTGGCAGGGGGCTTTGCAGGCATTGCTTCCTGGGTGGCAGCCACGCCCTTAGAC
GTGATCAAGTCCCGGATGCAGATGGATGGACTGAGACGCAGAGTGTACCAGGGGATGCTGGACTGCATG
GTGAGCAGCATCCGGCAGGAAGGACTGGGAGTCTTCTCCGGGGGTACCATCAACAGTCCCCGCGCC
TTTCCCGTCAATGCTGTACCTTCTCAGCTACGAATATCTCCTCCGCTGGTGGGA
ACGCGTACGCGGCCGCTCGAG - GFP Tag - GTTTAAAC
```

**Protein Sequence:** >Peptide sequence encoded by RG236720  
 Blue=ORF Red=Cloning site Green=Tag(s)

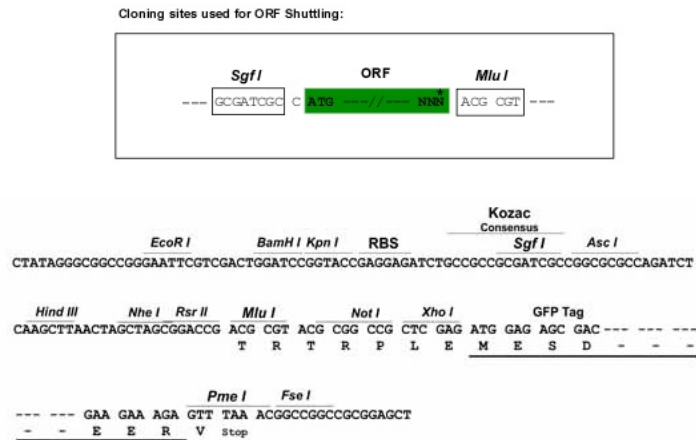
```
MPVEEFVAGWISGALGLVLGHPFDTVKVRQLQTQTYRGI VDCMVKIYRHESAYCLAPFDLIKVRLQNQT
EPRAQPGSPPPRYQGPVHCAASIFREEGPRGLFRGAWALTLRDTPTVGIYFITYEGLCRQYTPAQNP
SATVAVAGGFAGIASWAATPLDVIKSRMQMDGLRRRVYQGMDCMVSSIRQEGLVFFRGVTVINSARA
FPVNAVTFLSYELLRWWG
TRTRPLEMESDESGLPAMEIECRITGTLNGVEFELVGGEGTPEQGRMTNKMSTKGALTFSPYLLSHV
MGYGFYHFGTYPSGYENPFLHAINNGGYTNTRIEKYEDGGVLHVSFSYRYEAGRVIGDFKVMGTGFPED
SVIFTDKIIRSNAIVEHLHPMGDNDLDGSFTRFSLRDGGYSSVVD SHMHFKSAIHP SILQNGGPMFA
FRRVEEDHSNTELGIVEYQHAFKTPDADAGEERY
```



[View online »](#)

**Restriction Sites:** Sgfl-MluI

**Cloning Scheme:**



**ACCN:** NM\_001300820

**ORF Size:** 678 bp

**OTI Disclaimer:** The molecular sequence of this clone aligns with the gene accession number as a point of reference only. However, individual transcript sequences of the same gene can differ through naturally occurring variations (e.g. polymorphisms), each with its own valid existence. This clone is substantially in agreement with the reference, but a complete review of all prevailing variants is recommended prior to use. [More info](#)

**OTI Annotation:** This clone was engineered to express the complete ORF with an expression tag. Expression varies depending on the nature of the gene.

**Components:** The ORF clone is ion-exchange column purified and shipped in a 2D barcoded Matrix tube containing 10ug of transfection-ready, dried plasmid DNA (reconstitute with 100 ul of water).

**RefSeq:** [NM\\_001300820.1](#), [NP\\_001287749.1](#)

**RefSeq Size:** 2349 bp

**RefSeq ORF:** 681 bp

**Locus ID:** 283130

**UniProt ID:** [Q8N413](#)

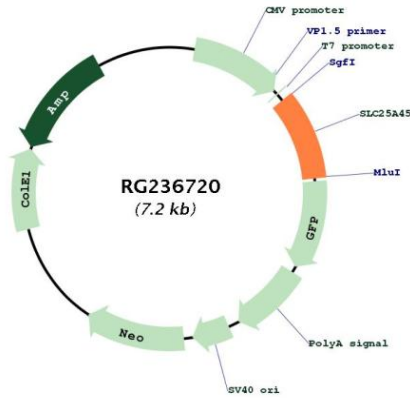
**Cytogenetics:** 11q13.1

**Protein Families:** Druggable Genome, Transmembrane

**MW:** 25.6 kDa

**Gene Summary:** SLC25A45 belongs to the SLC25 family of mitochondrial carrier proteins (Haitina et al., 2006 [PubMed 16949250]).[supplied by OMIM, Mar 2008]

Product images:



Circular map for RG236720