

Product datasheet for **RG236715**

SURF4 (NM_001280791) Human Tagged ORF Clone

Product data:

Product Type:	Expression Plasmids
Product Name:	SURF4 (NM_001280791) Human Tagged ORF Clone
Tag:	TurboGFP
Symbol:	SURF4
Synonyms:	ERV29
Mammalian Cell Selection:	Neomycin
Vector:	pCMV6-AC-GFP (PS100010)
E. coli Selection:	Ampicillin (100 ug/mL)
ORF Nucleotide Sequence:	>RG236715 representing NM_001280791. Blue=ORF Red=Cloning site Green=Tag(s)

```
GCTCGTTTAGTGAACCGTCAGAATTTTGTAAACGACTCACTATAGGGCGGCCGGGAATTCGTCGACTG
GATCCGGTACCGAGGAGATCTGCCGCCCGCATCGCC
ATGTGGTCCAGTGGAGCGAGCAGCGGACTACATCGACACCACCTGGAAGTGGGCTACCTGCTGGCC
TCGTCCTTCGTCTTCTCAACTTGCTGGGACAGCTGACTGGTGCCTGCTGGTGTGAGCAGGAAGTTC
GTGCAGTACGCCCTGCTTCGGGCTCTTTGGAATCATAGCTCTGCAGACGATTGCCTACAGCATTTTATGG
GACTTGAAGTTTTGATGAGGAACCTGGCCCTGGGAGGAGGCTGTTGCTGCTCCTAGCAGAATCCCGT
TCTGAAGGAAGAGCATGTTGCGGGCGTCCCCACCATGCGTGAGAGCTCCCCAAACAGTACATGCAG
CTCGGAGGCAGGGTCTTGCTGGTCTGATGTTTCATGACCCCTCCTCACTTTGACGCCAGCTCTTTTCT
ATTGTCCAGAACATCGTGGGCACAGCTCTGATGATTTTAGTGGCCATTGGTTTTAAACCAAGCTGGCT
GCTTTGACTCTTGTTGTGTGGCTCTTTGCCATCAACGTATATTTCAACGCCTTCTGGACCATTCCAGTC
TACAAGCCCATGCATGACTTCTGAAATACGACTTCTTCCAGACCATGTCGGTGATTGGGGGCTTGCTC
CTGGTGGTGGCCCTGGGCCCTGGGGGTGTCTCCATGGATGAGAAGAAGAAGGAGTGG
ACGCGTACGCGGCCGCTCGAG - GFP Tag - GTTTAAAC
```



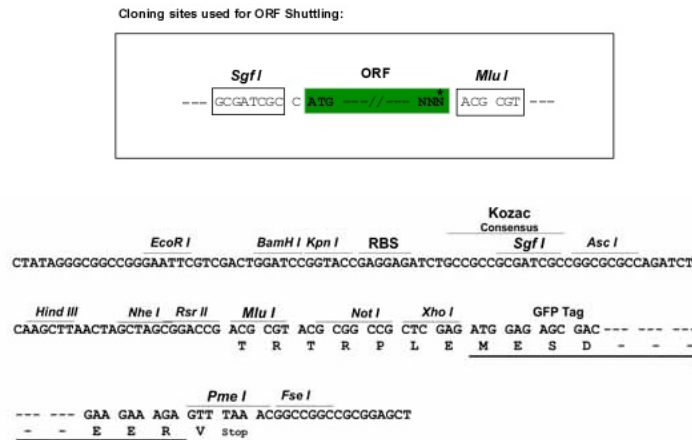
[View online »](#)

Protein Sequence: >Peptide sequence encoded by RG236715
 Blue=ORF Red=Cloning site Green=Tag(s)

MWFQWSEQRDYIDTTWNCGYLLASSFVFLNLLGQLTGCVLVLSRNFVQYACFGLFGIIALQTIAYSILW
 DLKFLMRNALGGGLLLLLAESRSEKSMFAGVPTMRESSPKQYMLGGRVLLVLMFMTLLHFDASFFS
 IVQINIVGTALMILVAIGFKTKLAALTLVWVLFAINVYFNAFWTIPVYKPMHDFLKYDFQTM SVIGLL
 LVVALGPGGVSMDEKKKEW
 TRTRPLEMESDESGLPAMEIECRITGTLNGVEFELVGGEGTPEQGRMTNKMSTKGALTFSPYLLSHV
 MGYGFYHFGTYPSGYENPFLHAINNGGYTNTRIEKYEDGGVLHVSFSYRYEAGRVIIGDFKVMGTGFPE
 SVIFTDKIIRSNAIVEHLHPMGDNDLDGSFTRTFSLRDGGYSSVVD SHMHFKSAIHPSILQNGGPMFA
 FRRVEEDHSNTELGIVEYQHAFKTPDADAGEERV

Restriction Sites: SgfI-MluI

Cloning Scheme:



ACCN: NM_001280791

ORF Size: 678 bp

OTI Disclaimer: The molecular sequence of this clone aligns with the gene accession number as a point of reference only. However, individual transcript sequences of the same gene can differ through naturally occurring variations (e.g. polymorphisms), each with its own valid existence. This clone is substantially in agreement with the reference, but a complete review of all prevailing variants is recommended prior to use. [More info](#)

OTI Annotation: This clone was engineered to express the complete ORF with an expression tag. Expression varies depending on the nature of the gene.

Components: The ORF clone is ion-exchange column purified and shipped in a 2D barcoded Matrix tube containing 10ug of transfection-ready, dried plasmid DNA (reconstitute with 100 ul of water).

RefSeq: [NM_001280791.1](#), [NP_001267720.1](#)

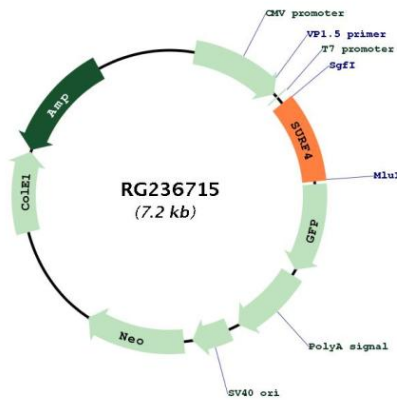
RefSeq Size: 3166 bp

RefSeq ORF: 681 bp

Locus ID: 6836
Cytogenetics: 9q34.2
Protein Families: Transmembrane
MW: 25.9 kDa

Gene Summary: This gene is located in the surfeit gene cluster, which is comprised of very tightly linked housekeeping genes that do not share sequence similarity. The encoded protein is a conserved integral membrane protein that interacts with endoplasmic reticulum-Golgi intermediate compartment proteins. Disruption of this gene results in reduced numbers of endoplasmic reticulum-Golgi intermediate compartment clusters and redistribution of coat protein I to the cytosol. Alternate splicing results in multiple transcript variants. [provided by RefSeq, Jul 2013]

Product images:



Circular map for RG236715