

## Product datasheet for **RG236711**

### USP46 (NM\_001286768) Human Tagged ORF Clone

#### Product data:

**Product Type:** Expression Plasmids  
**Product Name:** USP46 (NM\_001286768) Human Tagged ORF Clone  
**Tag:** TurboGFP  
**Symbol:** USP46  
**Mammalian Cell Selection:** Neomycin  
**Vector:** pCMV6-AC-GFP (PS100010)  
**E. coli Selection:** Ampicillin (100 ug/mL)  
**ORF Nucleotide Sequence:** >RG236711 representing NM\_001286768.  
 Blue=ORF Red=Cloning site Green=Tag(s)

```
GCTCGTTTAGTGAACCGTCAGAATTTTGTAAACGACTCACTATAGGGCGCCGGGAATTCGTCGACTG
GATCCGGTACCGAGGAGATCTGCCGCCGCGATCGCC
ATGCAGCAGGATGCTCATGAATTTTAAATTTTGTAAACACTATTGCGGACATCCTTCAGGAGGAG
AAGAAACAGGAAAAACAAAATGGAAAATTAATAAATGGCAACATGAACGAACCTGCGGAAAAATAAAA
CCAGAACTCACCTGGGTCCATGAGATTTTTAGGGAACGCTTACCAATGAAACTCGATGCTTGAAGTGT
GAAACTGTTAGTAGCAAAGATGAAGATTTTCTTGACCTTCTGTTGATGTGGAGCAGAATACATCCATT
ACCCACTGTCTAAGAGACTTCAGCAACACAGAAACACTGTGTAGTGAACAAAAATATTATTGTGAAACA
TGCTGCAGCAAAACAAGAAGCCAGAAAAGGATGAGGGTAAAAAGCTGCCATGATCTTGGCCCTGCAC
CTAAAGCGGTTCAAGTACATGGAGCAGCTGCACAGATACACCAAGCTGTCTTACCGTGTGGTCTTCCCT
CTGGAACCTCCGGCTCTTCAACACCTCCAGTGATGCAGTGAACCTGGACCGCATGTATGACTTGGTTGCG
GTGGTCGTTCACTGTGGCAGTGGTCTAATCGTGGGCATTATACACTATTGTGAAAAGTACGCGCTTC
TGGCTTTTGTGATGATGACATTGTAGAGGTTGGTTTGCAGATTATTCTCCAG
ACGCGTACGCGGCCGCTCGAG - GFP Tag - GTTAAAC
```

**Protein Sequence:** >Peptide sequence encoded by RG236711  
 Blue=ORF Red=Cloning site Green=Tag(s)

```
MQQDAHEFLNYLLNTIADILQEEKQKQKQNGKLNKNGMNEPAENKPEL TWVHEIFQGLTNETRCLNC
ETVSSKDEDFDLSDVVEQNTSITHCLRDFSNTETLCSEQKYCYCETCCSKQEAQKRMVKKLPMILALH
LKRFKYMEQLHRYTKLSYRVVFPLELRLFNTSSDAVNLDRMYDL VAVVVHCGSGPNRGHYITIVKSHGF
WLLFDDDIIVEVGLQIILQ
TRTRPLEMESDESGLPAMEIECRITGTLNGVEFELVGGEGTPEQGRMTNKMSTKGALTFSPYLLSHV
MGYGFYHFGTYPSGYENPFLHAINNGGYNTRIEKYEDGGVLHVSFSYRYEAGRVIGDFKVMGTGFPED
SVIFTDKIIRSNTVEHLHPMGDNDLDGSFTRFSLRDGGYSSVVD SHMHFKSAIHP SILQNGGPMFA
FRRVEEDHSNTELGIVEYQHAFKTPDADAGEERY
```

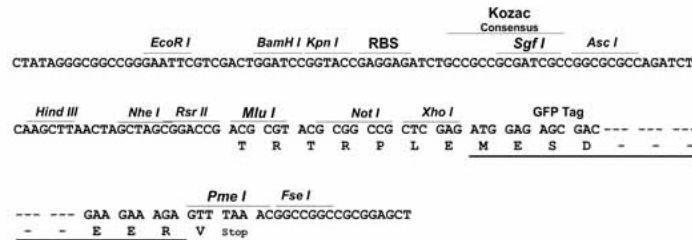
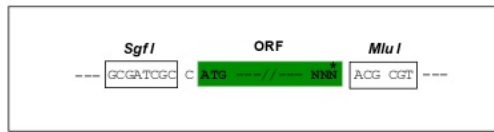


[View online »](#)

Restriction Sites: Sgfl-MluI

Cloning Scheme:

Cloning sites used for ORF Shutting:



ACCN: NM\_001286768

ORF Size: 675 bp

OTI Disclaimer: The molecular sequence of this clone aligns with the gene accession number as a point of reference only. However, individual transcript sequences of the same gene can differ through naturally occurring variations (e.g. polymorphisms), each with its own valid existence. This clone is substantially in agreement with the reference, but a complete review of all prevailing variants is recommended prior to use. [More info](#)

OTI Annotation: This clone was engineered to express the complete ORF with an expression tag. Expression varies depending on the nature of the gene.

Components: The ORF clone is ion-exchange column purified and shipped in a 2D barcoded Matrix tube containing 10ug of transfection-ready, dried plasmid DNA (reconstitute with 100 ul of water).

RefSeq: [NM\\_001286768.2](#)

RefSeq Size: 8133 bp

RefSeq ORF: 678 bp

Locus ID: 64854

UniProt ID: [P62068](#)

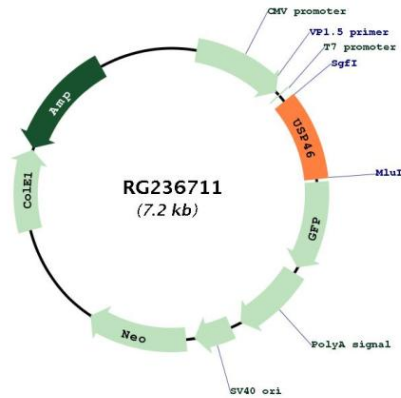
Cytogenetics: 4q12

Protein Families: Druggable Genome, Protease

MW: 26.7 kDa

**Gene Summary:**

Modification of cellular proteins by ubiquitin is an essential regulatory mechanism controlled by the coordinated action of multiple ubiquitin-conjugating and deubiquitinating enzymes. USP46 belongs to a large family of cysteine proteases that function as deubiquitinating enzymes (Quesada et al., 2004 [PubMed 14715245]).[supplied by OMIM, Jun 2009]

**Product images:**


Circular map for RG236711