

Product datasheet for **RG236707**

KCTD14 (NM_001282406) Human Tagged ORF Clone

Product data:

Product Type: Expression Plasmids
Product Name: KCTD14 (NM_001282406) Human Tagged ORF Clone
Tag: TurboGFP
Symbol: KCTD14
Mammalian Cell Selection: Neomycin
Vector: pCMV6-AC-GFP (PS100010)
E. coli Selection: Ampicillin (100 ug/mL)
ORF Nucleotide Sequence: >RG236707 representing NM_001282406.
 Blue=ORF Red=Cloning site Green=Tag(s)

```
GCTCGTTTAGTGAACCGTCAGAATTTTGTAAACGACTCACTATAGGGCGGCCGGGAATTCGTCGACTG
GATCCGGTACCGAGGAGATCTGCCGCCGCGATCGCC
ATGTCTACTGTTGTGGAGCTGAACGTGGGGGTGAGTTCCACACCACCACCCTGGGTACCCTGAGGAAG
TTTCCGGGCTCAAAGCTGGCAGAGATGTTCTCTAGCTTAGCCAAGGCCTCCACGGACGGGAGGGCCGC
TTCTTCATCGACCGCCCCAGCACCTATTTAGACCCATCTGGACTACCTGCGCACTGGGCAAGTGCCC
ACACAGCACATCCCTGAAGTGTACCGTGAGGCTCAGTTCTACGAAATCAAGCCTTTGGTCAAGTGCTG
GAGGACATGCCACAGATCTTTGGTGAGCAGGTGTCTCGGAAGCAGTTTTTGTGCAAGTGCCGGGTAC
AGCGAAACCTGGAGCTCATGGTGGCCTGGCAGTGCAGAAGCCATAACAGCACGGAAGTCCAGCGTG
CTTGTTGCTGCTGGTGGAACTGAGGAGCAGGATGCATATTATTACAGAGGTCCTGTGTTTTCTGCAGGAT
AAGAAGATGTTCAAGTCTGTTGTCAAGTTTGGGCCCTGGAAGGCGGTCTAGACAACAGCGACCTCATG
CACTGCCTGGAGATGGACATTAAGGCCAGGGTACAAGGTATTCTCCAAGTTCTACCTGACGTACCCC
ACCAAAAGAAACGAATTCATTTTAACATTTATTACCTCACCTTCACCTGGTGG
ACGCGTACGCGGCCGCTCGAG - GFP Tag - GTTTAAAC
```

Protein Sequence: >Peptide sequence encoded by RG236707
 Blue=ORF Red=Cloning site Green=Tag(s)

```
MSTVVELNVGGEFHTTLGLTRKFPKSLAEMFSSLAKASTDAEGRFFIDRPSTYFRPILDYLRGQVP
TQHIFEVYREAQFYIEKPLVKLLEDMPQIFGEQVSRKQFLLQVPGYSENLELMVRLARAEAITARKSSV
LVCLVETEEQDAYSEVLCFLQDKMKFSSVVKFPGPWKAVLDNSDLMHCLEMDIKAQYKVFVSKFYLTYP
TKRNEFHFNISFTFTWW
TRTRPLEMESDESGLPAMEIECRITGTLNGVEFELVGGEGTPEQGRMTNKMSTKGALTFSPYLLSHV
MGYGFYHFGTYPSTYENPFLHAINNGGYNTRIEKYEDGGVHVSFSYRYEAGRVIGDFKVMGTGFPED
SVIFTDKIIRSNTAVEHLHPMGDNDLDGSFTRFSLRDGGYSSVVDSDMHFKSAIHPISILQNGGPMFA
FRRVEEDHSNTELGIVEYQHAFKTPDADAGEERY
```

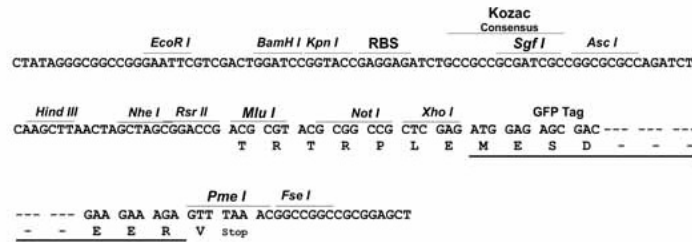
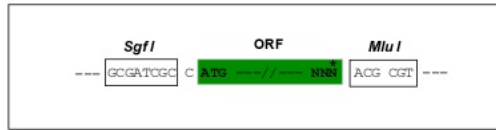


[View online »](#)

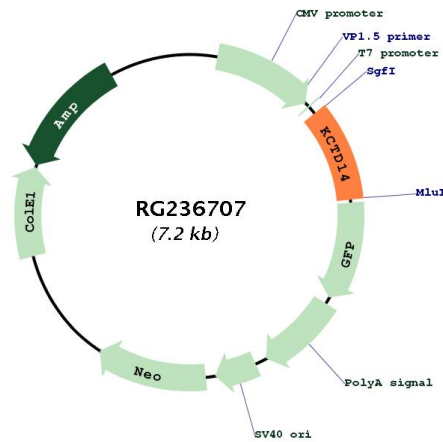
Restriction Sites: SgfI-MluI

Cloning Scheme:

Cloning sites used for ORF Shuttling:



Plasmid Map:



ACCN: NM_001282406

ORF Size: 675 bp

OTI Disclaimer: The molecular sequence of this clone aligns with the gene accession number as a point of reference only. However, individual transcript sequences of the same gene can differ through naturally occurring variations (e.g. polymorphisms), each with its own valid existence. This clone is substantially in agreement with the reference, but a complete review of all prevailing variants is recommended prior to use. [More info](#)

OTI Annotation: This clone was engineered to express the complete ORF with an expression tag. Expression varies depending on the nature of the gene.

Components:	The ORF clone is ion-exchange column purified and shipped in a 2D barcoded Matrix tube containing 10ug of transfection-ready, dried plasmid DNA (reconstitute with 100 ul of water).
RefSeq:	NM_001282406.1 , NP_001269335.1
RefSeq Size:	1799 bp
RefSeq ORF:	678 bp
Locus ID:	65987
UniProt ID:	Q9BQ13
Cytogenetics:	11q14.1
Protein Families:	Ion Channels: Other
MW:	26.6 kDa