

## Product datasheet for **RG236705**

### SLC35A2 (NM\_001282647) Human Tagged ORF Clone

#### Product data:

Product Type:	Expression Plasmids
Product Name:	SLC35A2 (NM_001282647) Human Tagged ORF Clone
Tag:	TurboGFP
Symbol:	SLC35A2
Synonyms:	CDG2M; CDGX; UDP-Gal-Tr; UGALT; UGAT; UGT; UGT1; UGT2; UGTL
Mammalian Cell Selection:	Neomycin
Vector:	pCMV6-AC-GFP (PS100010)
E. coli Selection:	Ampicillin (100 ug/mL)
ORF Nucleotide Sequence:	>RG236705 representing NM_001282647. Blue=ORF Red=Cloning site Green=Tag(s)

```
GCTCGTTTAGTGAACCGTCAGAATTTTGTAAACGACTCACTATAGGGCGCCGGGAATTCGTCGACTG
GATCCGGTACCGAGGAGATCTGCCGCCGCGATCGCC
ATGGCAGCGTTGGGGCTGGTGGTCCACCGCGCGCCCGGGCCAGGGGCGGTTCCGCGGGTGCATTG
GAGCCGGGACCGCCAGTGCGGCTCACAGGCGCCTGAAGTACATATCCCTAGCTGTGCTGGTGGTCCAG
AATGCCTCCCTCATCCTCAGCATCCGCTACGCCGCACGTTGCCAGGGGACCGCTTCTTTGCCACCACT
GCTGTGGTCATGGCGGAAGTGCTCAAAGGTCTCACCTGCCTGCTGCTCTTCGCACAGAAGAGGGGT
AACGTGAAGCACCTGGTCTCTCCTCCATGAGGCTGTCTGGTGCAGTATGTGGACACGCTCAAGCTC
GCAGTGCCCTCTCTCATCTACACCTTGCAATAACCTCCAGTATGTTGCCATCTCTAACCTACCAGCT
GCCACTTCCAGCCTTCCCGAGGTGCAGCCAAAGCCATAGCCTCTGCCTCTGCCTCCGCTCCGGGCC
CTGCGTTACACAGCAGCCTCCCGGGCAGCCACCACCACCGCAGCTGTCTCCACCGTGGAGACCTCAT
CACGGAGCCCTTCTGCCAAAGTTGCTACCAAGGTGAAGGGTTCCTAGCCGCTGGGATTGAAGACATT
GGCCTGGCCTCGTTCTCTTCTTGCCCTTGCCAGCTGGGACCAAATC
ACGCGTACGCGGCCGCTCGAG - GFP Tag - GTTTAAAC
```



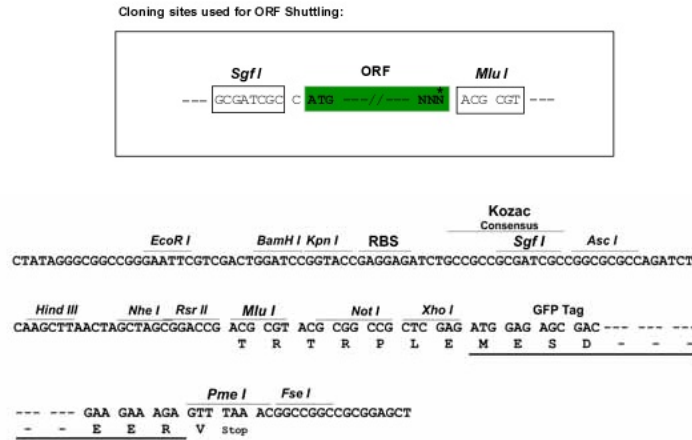
[View online »](#)

Protein Sequence: >Peptide sequence encoded by RG236705  
 Blue=ORF Red=Cloning site Green=Tag(s)

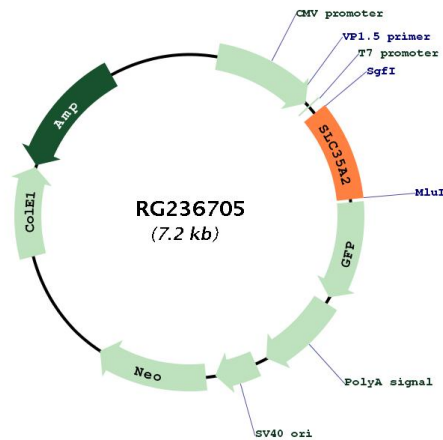
MAAVGAGGSTAAPGPGAVSAGALEPGTASAAHRLKYISLAVLVVQNASLILSIRYARTLPGRFFATT  
 AVVMAEVLKGLTCLLLLFAQKRGNVKHLVFLHEAVLVQYVDTLKLAVPSLIYTLQNNLQYVAISNLPA  
 ATFQSPRCSQSHSLCLCLRLRALRSPAASRAATTTAAVFPWRPHHGALSAKVAHQEGFLAAGIEDI  
 GLASFLLALGPAGTKL  
 TRTRPLEMESDESGLPAMEIECRITGTLNGVEFELVGGEGTPEQGRMTNKMSTKGALTFSPYLLSHV  
 MGYGFYHFGTYPSGYENPFLHAINNGGYTNTRIEKYEDGGVLHVSFSYRYEAGRVIGDFKVMGTGFPED  
 SVIFTDKIIRSNAVTEHLHPMGDNDLDGSFTRTFSLRDGGYSSVVDSHMHFKSAIHPSILQNGGPMFA  
 FRRVEEDHSNTELGIVEYQHAFKTPDADAGEERV

Restriction Sites: SgfI-MluI

Cloning Scheme:



Plasmid Map:



ACCN: NM\_001282647

<b>ORF Size:</b>	672 bp
<b>OTI Disclaimer:</b>	The molecular sequence of this clone aligns with the gene accession number as a point of reference only. However, individual transcript sequences of the same gene can differ through naturally occurring variations (e.g. polymorphisms), each with its own valid existence. This clone is substantially in agreement with the reference, but a complete review of all prevailing variants is recommended prior to use. <a href="#">More info</a>
<b>OTI Annotation:</b>	This clone was engineered to express the complete ORF with an expression tag. Expression varies depending on the nature of the gene.
<b>Components:</b>	The ORF clone is ion-exchange column purified and shipped in a 2D barcoded Matrix tube containing 10ug of transfection-ready, dried plasmid DNA (reconstitute with 100 ul of water).
<b>RefSeq:</b>	<a href="#">NM_001282647.2</a>
<b>RefSeq Size:</b>	1195 bp
<b>RefSeq ORF:</b>	675 bp
<b>Locus ID:</b>	7355
<b>UniProt ID:</b>	<a href="#">P78381</a>
<b>Cytogenetics:</b>	Xp11.23
<b>Protein Families:</b>	Transmembrane
<b>MW:</b>	23.8 kDa
<b>Gene Summary:</b>	This gene encodes a member of the nucleotide-sugar transporter family. The encoded protein is a multi-pass membrane protein. It transports UDP-galactose from the cytosol into Golgi vesicles, where it serves as a glycosyl donor for the generation of glycans. Mutations in this gene cause congenital disorder of glycosylation type II <sub>m</sub> (CDG2M). Multiple alternatively spliced transcript variants encoding distinct isoforms have been found for this gene. [provided by RefSeq, Oct 2014]