

Product datasheet for **RG236704**

COMMD5 (NM_001287237) Human Tagged ORF Clone

Product data:

Product Type:	Expression Plasmids
Product Name:	COMMD5 (NM_001287237) Human Tagged ORF Clone
Tag:	TurboGFP
Symbol:	COMMD5
Synonyms:	HCARG; HT002
Mammalian Cell Selection:	Neomycin
Vector:	pCMV6-AC-GFP (PS100010)
E. coli Selection:	Ampicillin (100 ug/mL)
ORF Nucleotide Sequence:	>RG236704 representing NM_001287237. Blue=ORF Red=Cloning site Green=Tag(s)

```
GCTCGTTTAGTGAACCGTCAGAATTTTGTAAACGACTCACTATAGGGCGCCGGGAATTCGTCGACTG
GATCCGGTACCGAGGAGATCTGCCGCCGCGATCGCC
ATGTCTGCTGTGGGGCTGCAACTCCATACCTGCATCATCCTGGTGATAGTCACAGTGGCCGAGTGAGT
TTCTTGGGGCCAGCTTCTCCAGAGGTGGCAGCAATGGCCCGGCTACTAGGGGACCTAGACAGGAGC
ACGTTTCAGAAAGTTGCTGAAGTTTGTGGTCAGCAGCCTGCAGGGGAGGACTGCCGAGAGGCTGTGCAG
CGTCTTGGGGTCAGCGCCAACCTGCCGGAGGAGCAGCTGGGTGCCCTGCTGGCAGGCATGCACACTG
CTCCAGCAGGCCCTCCGCTGCCCCACCAGCCTGAAGCCTGACACCTCAGGGACCAGCTCCAGGAG
CTCTGCATCCCCAAGACCTGGTCGGGGACTTGGCCAGCGTGGTATTTGGGAGCCAGCGGCCCTCCTT
GATTCTGTGGCCAGCAGCAGGGGGCCTGGCTGCCGCATGTTGCTGACTTTCGGTGGCGGTGGATGTA
GCAATCTCCACAGTGCCTGGCTCGCTCCCTGCAGCCGAGCGTCCTGATGCAGCTGAAGCTTTCAGAT
GGGTACAGATACCGCTTTGAGGTCCCCACAGCCAAGTTCAGGAGCTGCGGTACAGCGTGGCCCTGGTC
CTAAAGGAGATGGCAGATCTGGAGAAGAGGTGTGAGCGCAGACTGCAGGAC
ACGCGTACGCGGCCGCTCGAG - GFP Tag - GTTTAAAC
```



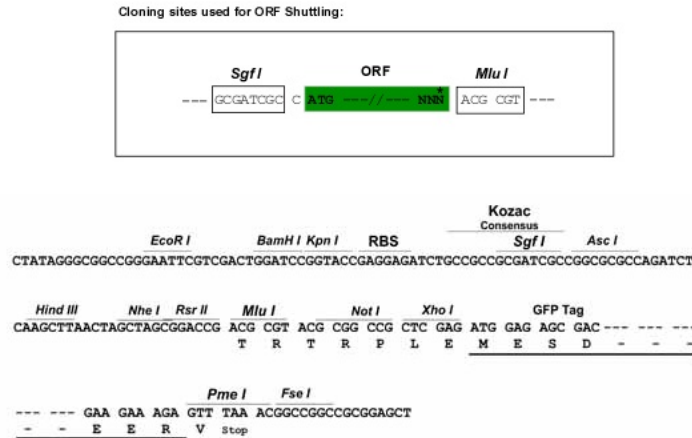
[View online »](#)

Protein Sequence: >Peptide sequence encoded by RG236704
 Blue=ORF Red=Cloning site Green=Tag(s)

MSAVGAATPYLHHPGDSHSGRVSFLGAQLPPEVAAMARLLGDLDRSTFRKLLKFVSSSLQGEDCREAVQ
 RLGVSANLPEEQLGALLAGMHTLLQQALRLPPTSLKPDTRDQLQELCIPQDLVGDLASVVFSGSRPLL
 DSVAAQQGAWLPHVADFRWRVDVAISTALARSLQPSVLMQLKLSDGSAYRFEVPTAKFQELRYSVALV
 LKEMADLEKRCERRLQD
 TRTRPLEMESDESGLPAMEIECRITGTLNGVEFELVGGEGTPEQGRMTNKMSTKGALTFSPYLLSHV
 MGYGFYHFGTYPSTYENPFLHAINNGGYTNTRIEKYEDGGVLHVSFSYRYEAGRVIGDFKVMGTGFPED
 SVIFTDKIIRSNAIVEHLHPMGDNDLDGSFTRTFSLRDGGYSSVVDSHMHFKSAIHPSILQNGGPMFA
 FRRVEEDHSNTELGIVEYQHAFKTPDADAGEERV

Restriction Sites: SgfI-MluI

Cloning Scheme:



ACCN: NM_001287237

ORF Size: 672 bp

OTI Disclaimer: The molecular sequence of this clone aligns with the gene accession number as a point of reference only. However, individual transcript sequences of the same gene can differ through naturally occurring variations (e.g. polymorphisms), each with its own valid existence. This clone is substantially in agreement with the reference, but a complete review of all prevailing variants is recommended prior to use. [More info](#)

OTI Annotation: This clone was engineered to express the complete ORF with an expression tag. Expression varies depending on the nature of the gene.

Components: The ORF clone is ion-exchange column purified and shipped in a 2D barcoded Matrix tube containing 10ug of transfection-ready, dried plasmid DNA (reconstitute with 100 ul of water).

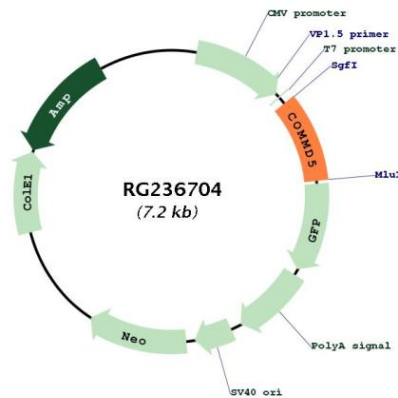
RefSeq: [NM_001287237.1](#), [NP_001274166.1](#)

RefSeq Size: 1588 bp

RefSeq ORF: 675 bp

Locus ID: 28991
UniProt ID: [Q9GZQ3](#)
Cytogenetics: 8q24.3
Protein Families: Druggable Genome
MW: 24.7 kDa
Gene Summary: May modulate activity of cullin-RING E3 ubiquitin ligase (CRL) complexes (PubMed:21778237). Negatively regulates cell proliferation. Negatively regulates cell cycle G2/M phase transition probably by transactivating p21/CDKN1A through the p53/TP53-independent signaling pathway. Involved in kidney proximal tubule morphogenesis (By similarity). Down-regulates activation of NF-kappa-B (PubMed:15799966).[UniProtKB/Swiss-Prot Function]

Product images:



Circular map for RG236704