

Product datasheet for **RG236701**

MPZL3 (NM_001286152) Human Tagged ORF Clone

Product data:

Product Type: Expression Plasmids
Product Name: MPZL3 (NM_001286152) Human Tagged ORF Clone
Tag: TurboGFP
Symbol: MPZL3
Mammalian Cell Selection: Neomycin
Vector: pCMV6-AC-GFP (PS100010)
E. coli Selection: Ampicillin (100 ug/mL)
ORF Nucleotide Sequence: >RG236701 representing NM_001286152.
 Blue=ORF Red=Cloning site Green=Tag(s)

```
GCTCGTTTAGTGAACCGTCAGAATTTTGTAAACGACTCACTATAGGGCGGCCGGGAATTCGTCGACTG
GATCCGGTACCGAGGAGATCTGCCGCCGCGATCGCC
ATGCAGCAGAGAGGAGCAGCTGGAAGCCGTGGCTGCGCTCTCTCCCTCTGCTGGGCGTCTGTTCTTC
CAGGATGCCCATGTCCGAGGTTATGTTGGAGAAAAGATCAAGTTGAAATGCACCTTCAAGTCAACTTCA
GATGTCAGTACAACTTACTATAGACTGGACATATCGCCCTCCAGCAGCAGCCACACAGTATCAATA
TTTCATTATCAGTCTTCCAGTACCAACCACAGCAGGCACATTCGGGATCGGATTTCTGGGTGGA
AATGTATACAAAGGGGATGCATCTATAAGTATAAGCAACCCTACCATAAAGGACAATGGGACATTCAGC
TGTGCTGTGAAGAATCCCCAGATGTGCATATAATATCCCATGACAGAGCTAACAGTCACAGAAAGG
GGTTTTGGCACCATGCTTTCCTCTGTGGCCCTTCTTCCATCCTTGTCTTTGTGCCCTCAGCCGTGGTG
GTTGCTCTGCTGCTGGTGAAGTGGGGAGGAGGCTGCTGGGCTGAAGAAGAGGAGCAGGCTGCGCTAT
AAGAAGTCATCTATTGAGGTTCCGATGACACTGATCAGGAGGAGGAAGAGGCGTGTATGGCAGGCTT
TGTGTCCGTTGCGCTGAGTGCCTGGATTGACACTATGAAGAGACATAT
ACGCGTACGCGGCCGCTCGAG - GFP Tag - GTTTAAAC
```

Protein Sequence: >Peptide sequence encoded by RG236701
 Blue=ORF Red=Cloning site Green=Tag(s)

```
MQQRGAAGSRGALFPLLGLVFFQDAHVRYVGEKIKLKCTFKSTSDVTDKLTIDWYRPPSSSHTVSI
FHYQSFQYPTTAGTFRDRISWVGNVYKGDASISISNPTIKDNGTFSCAVKNPPDVHNNIPMTELVTYER
GFGTMLSSVALLSILVFVPSAVVALLLRMRKAAGLKKRSRSGYKSSIEVSDDDTQEEEEACMARL
CVRCAECLDSYEETY
TRTRPLEMESDESGLPAMEIECRITGTLNGVEFELVGGEGTPEQGRMTNKMSTKGALTFSPYLLSHV
MGYGFYHFGTYPSGYENPFLHAINNGGYNTRIEKYEDGGVLHVSFSYRYEAGRVIGDFKVMGTGFPED
SVIFTDKIIRSNTAVEHLHPMGDNDLDGSFTRFSLRDGGYSSVVDSHMHFKSAIHPSILQNGGPMFA
FRRVEEDHSNTELGIVEYQHAFKTPDADAGEERY
```

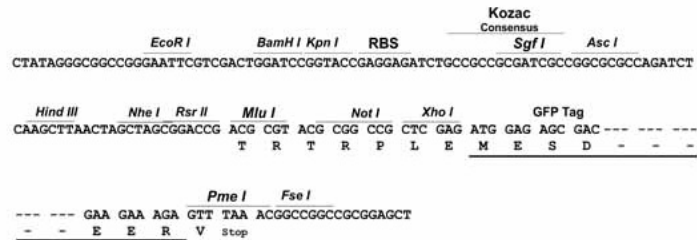
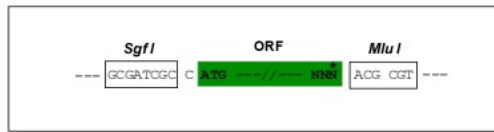


[View online »](#)

Restriction Sites: Sgfl-MluI

Cloning Scheme:

Cloning sites used for ORF Shutting:



ACCN: NM_001286152

ORF Size: 669 bp

OTI Disclaimer: The molecular sequence of this clone aligns with the gene accession number as a point of reference only. However, individual transcript sequences of the same gene can differ through naturally occurring variations (e.g. polymorphisms), each with its own valid existence. This clone is substantially in agreement with the reference, but a complete review of all prevailing variants is recommended prior to use. [More info](#)

OTI Annotation: This clone was engineered to express the complete ORF with an expression tag. Expression varies depending on the nature of the gene.

Components: The ORF clone is ion-exchange column purified and shipped in a 2D barcoded Matrix tube containing 10ug of transfection-ready, dried plasmid DNA (reconstitute with 100 ul of water).

RefSeq: [NM_001286152.2](#)

RefSeq Size: 3950 bp

RefSeq ORF: 672 bp

Locus ID: 196264

UniProt ID: [Q6UWV2](#)

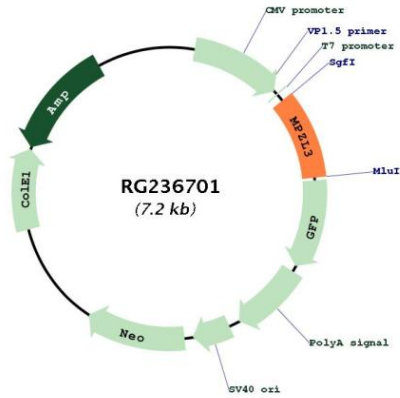
Cytogenetics: 11q23.3

Protein Families: Transmembrane

MW: 25.1 kDa

Gene Summary: Mediates homophilic cell-cell adhesion.[UniProtKB/Swiss-Prot Function]

Product images:



Circular map for RG236701