

Product datasheet for **RG236692**

BCL2L12 (NM_001282520) Human Tagged ORF Clone

Product data:

Product Type: Expression Plasmids
Product Name: BCL2L12 (NM_001282520) Human Tagged ORF Clone
Tag: TurboGFP
Symbol: BCL2L12
Mammalian Cell Selection: Neomycin
Vector: pCMV6-AC-GFP (PS100010)
E. coli Selection: Ampicillin (100 ug/mL)
ORF Nucleotide Sequence: >RG236692 representing NM_001282520.
 Blue=ORF Red=Cloning site Green=Tag(s)

```
GCTCGTTTAGTGAACCGTCAGAATTTTGTAAATACGACTCACTATAGGGCGGCCGGGAATTCGTCGACTG
GATCCGGTACCGAGGAGATCTGCCGCCGCGATCGCC
ATGGGACGGCCCGCTGGGCTGTTCCCGCCCTATGCCCTTTTTGGGTTCCGGCCAGAGGCATGCTGG
GAGCGTCACATGCAAATTGAGCGTGCACCCAGCGTTCCGCCCTTCTACGCTGGGCGGTTATCGACCC
GGCCAGTGCGCAGGCGGGAAAGTTGAACTAATAAAGTTTGTACGAGTTCAGTGGAGGAGACCGCAA
GTTGAGTGGAGGAGGCGGGTGGGGCCCCGACCAGGTGCCTCCATGGCAGGCTCTGAAGAGCTGGGG
CTCCGGGAAGACACGCTGAGGGTCTAGCTGCCTCCTTAGGCGTGGTGAAGCTGCCGGTCTCCTGTT
CCAACCTCACCTAGAAGCCCTGCCAAGAAGACCAACAGACTTCCTGAGCCGCTCGAAGATGTCTT
CCCTGCTCCCTGGGGCGAGGAGCAGCCCCCTCTGAGTCCCCTCGGCTTGCTCTGCCCCATCCGCCCC
TGCTATGGTTTAGAGCCTGGCCAGCTACTCCAGACTTCTATGCTTTGGTGGCCAGCGGCTGGAACAG
CTGGTCCAAGAGCAGCTGAAATCTCCGCCAGCCAGGAGGCATCCTGGCTGTTTACCCTGGACTT
GAACCTGCCATTGGACTGAGCTCTTTCTCAGAAGCTGCTACAAGA
ACGCGTACGCGGCCGCTCGAG - GFP Tag - GTTTAAAC
```

Protein Sequence: >Peptide sequence encoded by RG236692
 Blue=ORF Red=Cloning site Green=Tag(s)

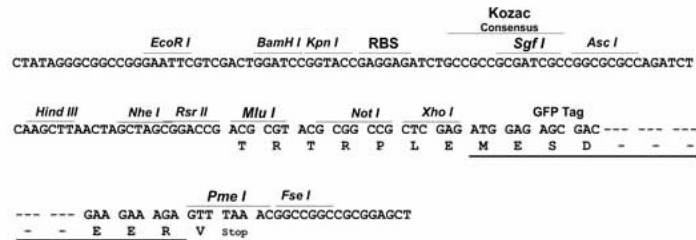
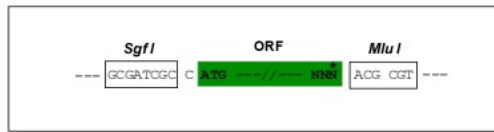
```
MGRPAGLFPPLCPFLGFRPEACWERHMQIERAPSVPPFLRWAGYRPGPVRRRGKVELIKFVVRVQWRRPQ
VEWRRRRWGPGGASMGSEELGLREDTLRVLAFLRRGEAAGSPVPTPRSPAQEEPTDFLSRLRRCL
PCSLGRGAAPSESPRPSLPIRPGYGLPGLPDPDFYALVAQRLEQLVQELKSPSPGGHPGCFTRGL
ELAIGLSSFSEAATR
TRTRPLEMESDESGLPAMEIECRITGTLNGVEFELVGGEGTPEQGRMTNKMSTKGALTFSPYLLSHV
MGYGFYHFGTYPSGYENPFLHAINNGYTNTRIEKYEDGGVLHVSFSYRYEAGRVIGDFKVMGTGFPED
SVIFTDKIIRSNAIVEHLHPMGDNDLDGSFTRFSLRDGGYSSVVDSHMHFKSAIHPSILQNGGPMFA
FRRVEEDHSNTELGIVEYQHAFKTPDADAGEERY
```



Restriction Sites: Sgfl-MluI

Cloning Scheme:

Cloning sites used for ORF Shutting:



ACCN: NM_001282520

ORF Size: 666 bp

OTI Disclaimer: The molecular sequence of this clone aligns with the gene accession number as a point of reference only. However, individual transcript sequences of the same gene can differ through naturally occurring variations (e.g. polymorphisms), each with its own valid existence. This clone is substantially in agreement with the reference, but a complete review of all prevailing variants is recommended prior to use. [More info](#)

OTI Annotation: This clone was engineered to express the complete ORF with an expression tag. Expression varies depending on the nature of the gene.

Components: The ORF clone is ion-exchange column purified and shipped in a 2D barcoded Matrix tube containing 10ug of transfection-ready, dried plasmid DNA (reconstitute with 100 ul of water).

RefSeq: [NM_001282520.1](#), [NP_001269449.1](#)

RefSeq Size: 1528 bp

RefSeq ORF: 669 bp

Locus ID: 83596

UniProt ID: [Q9HB09](#)

Cytogenetics: 19q13.33

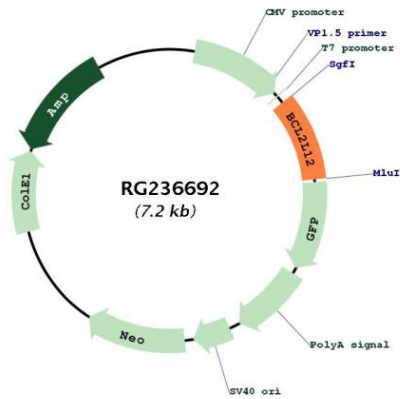
Protein Families: Druggable Genome

MW: 25.1 kDa

Gene Summary:

This gene encodes a member of a family of proteins containing a Bcl-2 homology domain 2 (BH2). The encoded protein is an anti-apoptotic factor that acts as an inhibitor of caspases 3 and 7 in the cytoplasm. In the nucleus, it binds to the p53 tumor suppressor protein, preventing its association with target genes. Overexpression of this gene has been detected in a number of different cancers. There is a pseudogene for this gene on chromosome 3. Alternative splicing results in multiple transcript variants. [provided by RefSeq, Sep 2013]

Product images:



Circular map for RG236692