

Product datasheet for **RG236687**

TPD52L2 (NM_001243895) Human Tagged ORF Clone

Product data:

Product Type:	Expression Plasmids
Product Name:	TPD52L2 (NM_001243895) Human Tagged ORF Clone
Tag:	TurboGFP
Symbol:	TPD52L2
Synonyms:	D54; TPD54
Mammalian Cell Selection:	Neomycin
Vector:	pCMV6-AC-GFP (PS100010)
E. coli Selection:	Ampicillin (100 ug/mL)
ORF Nucleotide Sequence:	>RG236687 representing NM_001243895. Blue=ORF Red=Cloning site Green=Tag(s)

```
GCTCGTTTAGTGAACCGTCAGAATTTTGTAAACGACTCACTATAGGGCGGCCGGGAATTCGTCGACTG
GATCCGGTACCGAGGAGATCTGCCGCCCGGATCGCC
ATGGACTCCGCCGCCAAGATATCAACCTGAATTCTCCTAACAAAGGCTGCTGTCTGACTCCATGACG
GATGTTCTGTCGACACAGGTGTGGCTGCCCGACTCCTGCTGTTGAGGGTCTGACAGAGGCTGAGGAG
GAGGAGCTCAGGGCTGAGCTTACCAAGGTGGAAGAGGAAATTGCACTCTGCCAGGCTCCTGCCAGCC
AAGGAGAGGCACTGTGGAGAGCTCAAGAGGAGGCTGGCCTCTCCACCCTGGGGAGCTGAAACAGAAC
CTGTCCAGGAGCTGGCATGACGTGCAGGTCTCTAGCGCCTATGTGAAAATTCTGAGAACTTGGAGAG
TGAATGAGAAAGTGACCCAGTCAGACCTTACAAGAAGACTCAGGAACTCTTTCACAGGCAGGACAG
AAGACTTCAGCTGCCCTGTCCACAGTGGGCTCTGCCATCAGCAGGAAGCTTGGAGACATGAGTCTAAGG
TTGTGGGTGACAGAGAGAACGGCAGTGACAACCTCCCTTCTCAGCGGGAGTGGTGACAAGCCCTGT
CGGATCCCGCACCTTTCTAAGCCTGTGGTTGCTTACCCGCTGCAGAGCACACGCAACCCAGCCTCAG
ATCACAGCCGAGCTCTGTTAGCGGAGCAGCCAGCCAGGGCGGA
ACGCGTACGCGGCCGCTCGAG - GFP Tag - GTTTAAAC
```



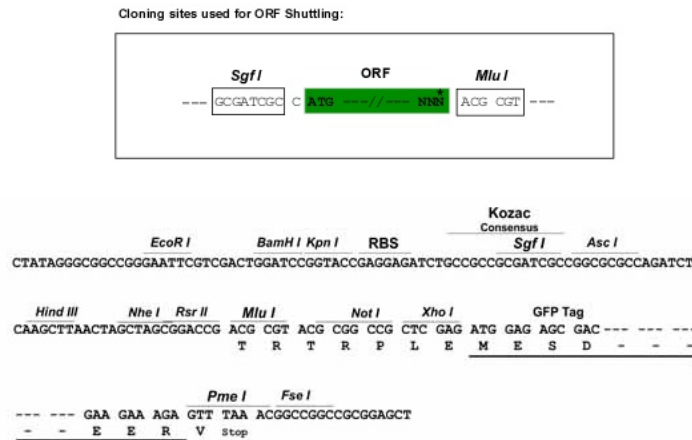
[View online »](#)

Protein Sequence: >Peptide sequence encoded by RG236687
 Blue=ORF Red=Cloning site Green=Tag(s)

MDSAGQDINLNSPNKGLLSDSMTDVPVDTGVAARTPAVEGLTEAEEEEELRAELTKVEEEIVTLRQVLAA
 KERHCGELKRRLGLSTLGELKQNLRSWHDVQVSSAYVKTSEKLGWNEKVTQSDLYKKTQETLSQAGQ
 K TSAALSTVGS AISRKLGDMSLRLLWV TERTAVT TSLPQRGVV TSPCRIPHL SKPVVASPAAEHTQPSLS
 ITAAALFSGAASQGG
 TRTRPLEMESDESGLPAMEIECRITGTLNGVEFELVGGGEGTPEQGRMTNKMSTKGALTFSPYLLSHV
 MGYGFYHFGTYPSGYENPFLHAINNGGYNTRIEKYEDGGVLHVSFSYRYEAGRVIGDFKVMGTGFPED
 SVIFTDKIIRS NATVEHLHPMGDNDLDGSFTRTFSLRDGGYSSVVD SHMHFKSAIHPSILQNGGPMFA
 FRRVEEDHSNTELGIVEYQHAFKTPDADAGEERV

Restriction Sites: SgfI-MluI

Cloning Scheme:



ACCN: NM_001243895

ORF Size: 666 bp

OTI Disclaimer: The molecular sequence of this clone aligns with the gene accession number as a point of reference only. However, individual transcript sequences of the same gene can differ through naturally occurring variations (e.g. polymorphisms), each with its own valid existence. This clone is substantially in agreement with the reference, but a complete review of all prevailing variants is recommended prior to use. [More info](#)

OTI Annotation: This clone was engineered to express the complete ORF with an expression tag. Expression varies depending on the nature of the gene.

Components: The ORF clone is ion-exchange column purified and shipped in a 2D barcoded Matrix tube containing 10ug of transfection-ready, dried plasmid DNA (reconstitute with 100 ul of water).

RefSeq: [NM_001243895.1](#), [NP_001230824.1](#)

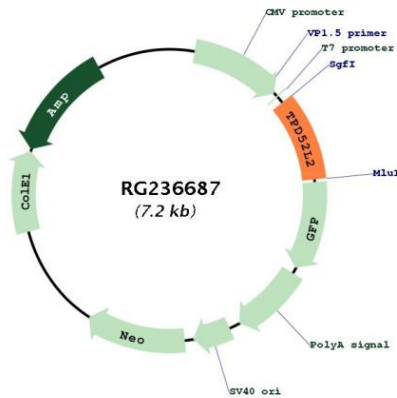
RefSeq Size: 2310 bp

RefSeq ORF: 669 bp

Locus ID: 7165
Cytogenetics: 20q13.33
MW: 24.2 kDa

Gene Summary: This gene encodes a member of the tumor protein D52-like family. These proteins are characterized by an N-terminal coiled-coil motif that is used to form homo- and heteromeric complexes with other tumor protein D52-like proteins. Expression of this gene may be a marker for breast cancer and acute lymphoblastic leukemia. Alternatively spliced transcript variants encoding multiple isoforms have been observed for this gene, and a pseudogene of this gene is located on the long arm of chromosome 12. [provided by RefSeq, Aug 2011]

Product images:



Circular map for RG236687