

Product datasheet for **RG236664**

TSPAN16 (NM_001282510) Human Tagged ORF Clone

Product data:

Product Type:	Expression Plasmids
Product Name:	TSPAN16 (NM_001282510) Human Tagged ORF Clone
Tag:	TurboGFP
Symbol:	TSPAN16
Synonyms:	TM-8; TM4-B; TM4SF16
Mammalian Cell Selection:	Neomycin
Vector:	pCMV6-AC-GFP (PS100010)
E. coli Selection:	Ampicillin (100 ug/mL)
ORF Nucleotide Sequence:	>RG236664 representing NM_001282510. Blue=ORF Red=Cloning site Green=Tag(s)

```
GCTCGTTTAGTGAACCGTCAGAATTTGTAAACGACTCACTATAGGGCGCCGGGAATTCGTCGACTG
GATCCGGTACCGAGGAGATCTGCCGCCGCGATCGCC
ATGGCTGAAATCCACACTCCGTATTCTTCCTTGAAGAACTGTTATCTTTACTCAATGGCTTCGTGGCT
GTGTCTGGCATCATCCTAGTTGGCCTGGGCATTGGTGGTAAATGTGGAGGGCCTCTCTGACGAATGTC
CTCGGGCTGTCTCCGCATACCTCCTTACGTTGGCAACCTGTGCCTGGTATGGGATGCATCACGGTA
CTGCTTGGCTGTGCCGGTGGTATGGAGCGACTAAAGAGAGCAGAGGCACGCTCTGTTTGTGGAGAT
GTGGCCTTGAACACACCTTCGTGACCCTGAGGAAGAATTACAGAGGTTACAACGAGCCAGACGACTAT
TCTACACAGTGGAACTTGGTCATGGAGAAGCTAAAGTGCTGTGGGTGAATAACTACACAGATTTTCT
GGCTTTCCTTCGAAATGACAACGGGCCACACCTACCCAGGAGTTGCTGTAATCCATCGGAAGTGTG
TCCTGTGACGGACGCGATGTGTCTCCAAACGTCATCCACCAGAAGGGCTGTTTCCATAAACTCCTAAAA
ATCACCAAGACTCAGAGCTTACCCCTGAGTGGGAGCTCTCTGGGAGTGCAGTGATACAGTTGCCAGGA
ATTCTTGCCACTTTGCTGCTGTTTATCAAGCTGGGC
ACGCGTACGCGGCCGCTCGAG - GFP Tag - GTTTAAAC
```



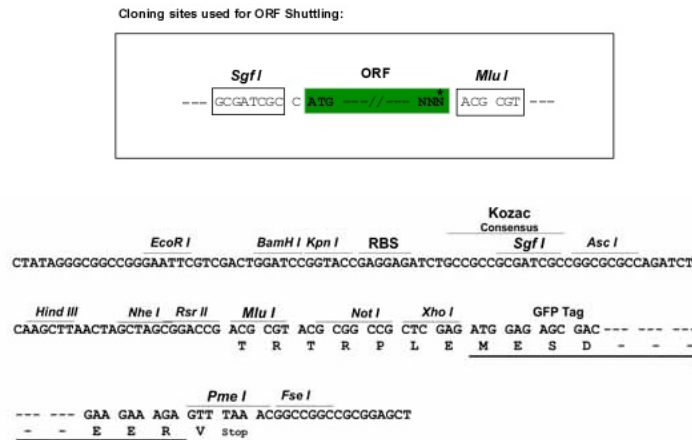
[View online »](#)

Protein Sequence: >Peptide sequence encoded by RG236664
 Blue=ORF Red=Cloning site Green=Tag(s)

MAEIHTPYSSLKLLSLLNGFVAVSGIILVGLGIGGKCGGASLTNVLGLSSAYLLHVGNLCLVMGCITV
 LLGCAGWYGATKESRGTLLFVGDALEHTFVTLRKNYRGYNPDDYSTQWNLVMEKLKCCGVNNTDFSGSS
 FEMTTGHTYPRSCCKSIGSVSCDGRDVSPIVHQQKGFHLLKITKTQSFTLSGSSLGAAVIQLPG
 ILATLLLFIKLG
 TRTRPLEMESDESGLPAMEIECRITGTLNGVEFELVGGEGTPEQGRMTNKMSTKGALTFSPYLLSHV
 MGYGFYHFGTYPSGYENPFLHAINNGGYNTRIEKYEDGGVLHVSFSYRYEAGRVIGDFKVMGTGFPED
 SVIFTDKIIRSNAIVEHLHPMGDNDLDGSFTRTFSLRDGGYSSVVDSHMHFKSAIHPSILQNGGPMFA
 FRRVEEDHSNTELGIVEYQHAFKTPDADAGEERV

Restriction Sites: SgfI-MluI

Cloning Scheme:



ACCN: NM_001282510

ORF Size: 657 bp

OTI Disclaimer: The molecular sequence of this clone aligns with the gene accession number as a point of reference only. However, individual transcript sequences of the same gene can differ through naturally occurring variations (e.g. polymorphisms), each with its own valid existence. This clone is substantially in agreement with the reference, but a complete review of all prevailing variants is recommended prior to use. [More info](#)

OTI Annotation: This clone was engineered to express the complete ORF with an expression tag. Expression varies depending on the nature of the gene.

Components: The ORF clone is ion-exchange column purified and shipped in a 2D barcoded Matrix tube containing 10ug of transfection-ready, dried plasmid DNA (reconstitute with 100 ul of water).

RefSeq: [NM_001282510.2](#)

RefSeq Size: 970 bp

RefSeq ORF: 660 bp

Locus ID: 26526

UniProt ID: [Q9UKR8](#)

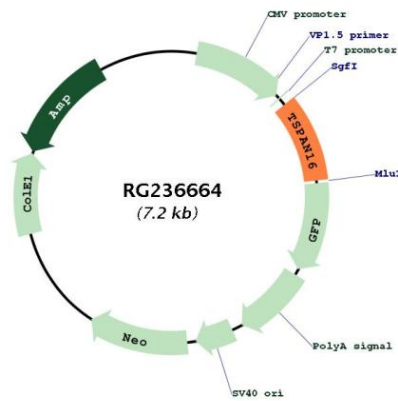
Cytogenetics: 19p13.2

Protein Families: Transmembrane

MW: 23.8 kDa

Gene Summary: The protein encoded by this gene is a member of the transmembrane 4 superfamily, also known as the tetraspanin family. Most of these members are cell-surface proteins that are characterized by the presence of four hydrophobic domains. The proteins mediate signal transduction events that play a role in the regulation of cell development, activation, growth and motility. This encoded protein might couple to signal transduction pathways and possibly modulate cellular activation and adhesion in haemopoietic and neural tissue. Several transcript variants encoding different isoforms have been found for this gene. [provided by RefSeq, Sep 2013]

Product images:



Circular map for RG236664