

Product datasheet for **RG236663**

WFDC1 (NM_001282467) Human Tagged ORF Clone

Product data:

Product Type:	Expression Plasmids
Product Name:	WFDC1 (NM_001282467) Human Tagged ORF Clone
Tag:	TurboGFP
Symbol:	WFDC1
Synonyms:	PS20
Mammalian Cell Selection:	Neomycin
Vector:	pCMV6-AC-GFP (PS100010)
E. coli Selection:	Ampicillin (100 ug/mL)
ORF Nucleotide Sequence:	>RG236663 representing NM_001282467. Blue=ORF Red=Cloning site Green=Tag(s)

```
GCTCGTTTAGTGAACCGTCAGAATTTTGTAAACGACTCACTATAGGGCGCCGGGAATTCGTCGACTG
GATCCGGTACCGAGGAGATCTGCCGCCGCGATCGCC
ATGCCTTTAACCGCGTGGGGCCGGCAGCTGCAGGAGGCAGATCATCCGGGCTCTGTGCCTCTTGCTA
CTTCTCCTCCACGCCGGCTCTGCCAAGAATATCTGAAACGGGCATTGCCTGCGAGGCTGGCCGAGAAA
TCCCGTGCCGAGGAGGCGGGCGCGCCCGCGGCCCGCCGAGCCCGAGCAGACCCTGCCCGCCGCT
CCGCGGACGCTGCCCGCGCGCTGCCAGGCCGCGCGTGT CAGGCGGACTCCGAGTGCCCGGGCAGC
CGGCGCTGCTGTACAACGGATGCGCCTACGCCTGCCTAGAAGCTGTGCCGCCCCGCCAGTCTTAGAC
TGCTGGTGCAGCCGAAACCTCGATGGCTTGGTGGCAATGGCTGGCTCCTGGATGGCCCTGAGGAGGTG
TTACAAGAGGCGTGCAGCACACGGAGGATGGGGCCGAACCCCTGCTCTGTCCCTCGGGCTATGAGTGC
CACATCCTGAGCCAGGTGACGTGGCCGAAGGTATCCCCAACCGTGGGCAGTGCCTCAAGCAGCGCCGG
CAAGCAGATGGGCGAATCCTACGACACAACTTTACAAAGAATATCCAGAAGGTGACTCAAAGAATGTG
GCAGAACCTGGAAGGGGACAACAGAAGCACTTTTCAG
ACGCGTACGCGGCCGCTCGAG - GFP Tag - GTTTAAAC
```



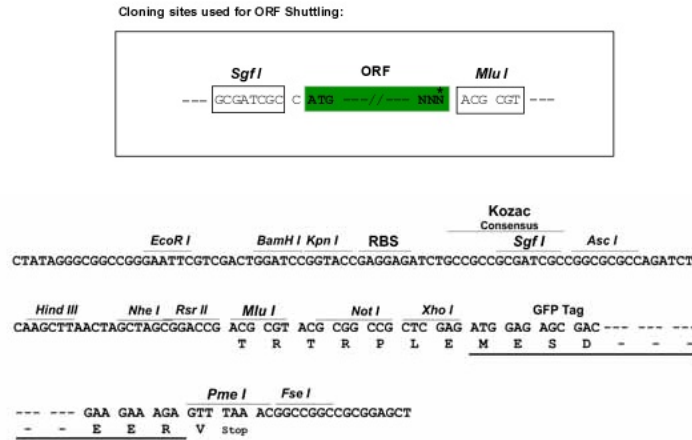
[View online »](#)

Protein Sequence: >Peptide sequence encoded by RG236663
 Blue=ORF Red=Cloning site Green=Tag(s)

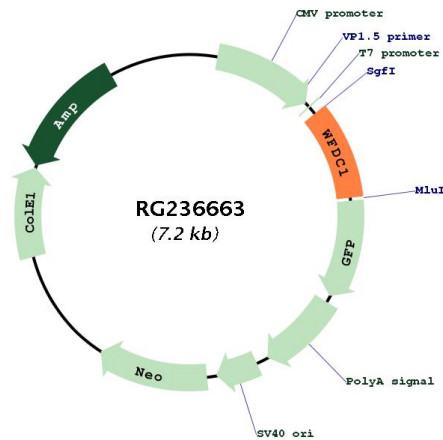
MPLTGVGPGSCRRIIRALCLLLLLHAGSAKNIWKRALPARLAEKSRAEEAGAPGGPRQPRADRCPPP
 PRTLPPGACQAARCQADSECPRHRRCCYNGCAYACLEAVPPPPVLDWL VQPKRWLGGNGWLLDGPEEV
 LQEACSTTEDGAPELLCPSGYECHILSPGDVAEGIPNRGQCVKQRQADGRILRHKLYKEYPEGDSKNV
 AEPGRGQQKHFQ
 TRTRPLEMESDESGLPAMEIECRITGTLNGVEFELVGGEGTPEQGRMTNKMSTKGALTFSPYLLSHV
 MGYGFYHFGTYPSGYENPFLHAINNGGYTNTRIEKYEDGGVLHVSFSYRYEAGRVIGDFKVMGTGFPED
 SVIFTDKIIRSNAVHHLPMGDNDLDGSFTRTFSLRDGGYSSVVD SHMHFKSAIHPSILQNGGPMFA
 FRRVEEDHSNTELGIVEYQHAFKTPDADAGEERV

Restriction Sites: SgfI-MluI

Cloning Scheme:



Plasmid Map:



ACCN: NM_001282467

ORF Size:	657 bp
OTI Disclaimer:	The molecular sequence of this clone aligns with the gene accession number as a point of reference only. However, individual transcript sequences of the same gene can differ through naturally occurring variations (e.g. polymorphisms), each with its own valid existence. This clone is substantially in agreement with the reference, but a complete review of all prevailing variants is recommended prior to use. More info
OTI Annotation:	This clone was engineered to express the complete ORF with an expression tag. Expression varies depending on the nature of the gene.
Components:	The ORF clone is ion-exchange column purified and shipped in a 2D barcoded Matrix tube containing 10ug of transfection-ready, dried plasmid DNA (reconstitute with 100 ul of water).
RefSeq:	NM_001282467.2
RefSeq Size:	1472 bp
RefSeq ORF:	660 bp
Locus ID:	58189
UniProt ID:	Q9HC57
Cytogenetics:	16q24.1
Protein Families:	Secreted Protein
MW:	24.4 kDa
Gene Summary:	This gene encodes a member of the WAP-type four disulfide core domain family. The WAP-type four-disulfide core domain contains eight cysteines forming four disulfide bonds at the core of the protein, and functions as a protease inhibitor in many family members. This gene is mapped to chromosome 16q24, an area of frequent loss of heterozygosity in cancers, including prostate, breast and hepatocellular cancers and Wilms' tumor. This gene is downregulated in many cancer types and may be involved in the inhibition of cell proliferation. The encoded protein may also play a role in the susceptibility of certain CD4 memory T cells to human immunodeficiency virus infection. Alternative splicing results in multiple transcript variants. [provided by RefSeq, Sep 2013]