

Product datasheet for **RG236662**

CDCA3 (NM_001297603) Human Tagged ORF Clone

Product data:

Product Type:	Expression Plasmids
Product Name:	CDCA3 (NM_001297603) Human Tagged ORF Clone
Tag:	TurboGFP
Symbol:	CDCA3
Synonyms:	GRCC8; TOME-1
Mammalian Cell Selection:	Neomycin
Vector:	pCMV6-AC-GFP (PS100010)
E. coli Selection:	Ampicillin (100 ug/mL)
ORF Nucleotide Sequence:	>RG236662 representing NM_001297603. Blue=ORF Red=Cloning site Green=Tag(s)

```
GCTCGTTTAGTGAACCGTCAGAATTTTGTAAACGACTCACTATAGGGCGGCCGGGAATTCGTGCACTG
GATCCGGTACCGAGGAGATCTGCCGCCGCGATCGCC
ATGGGCTCAGCCAAGAGCGTCCCAGTCACACCAGCGCGGCCTCCGCCGACAACAAGCATCTGGCTCGA
GTGGCGGACCCCGTTACCTAGTGTGGCATCCTGCGCACTCCCATCCAGGTGGAGAGCTCTCCACAG
CCAGGCCACCAGCAGGGGAGCAACTGGAGGCTTAAACATGCCCAGGACTCAGATCCCCGCTCTCCT
ACTTTGGTATTGCACGGACACCTATGAAGACCAGCAGTGGAGACCCCAAGCCACTGGTGAACAG
CTGAGTGAAGTATTTGAAACTGAAGACTCTAAATCAAATCTTCCCCAGAGCCTGTTCTGCCCCAGAG
GCACCTTTATCTTCTGAATTGGACTTGCCTCTGGGTACCCAGTTATCTGTTGAGGAACAGATGCCACCT
TGGAACAGACTGAGTTCCCTCAAACAGGTGTTTTCCAAGGAGGAAGCAAGACAGCCACAGAAACC
CCTGTGGCCAGCCAGAGCTCCGACAAGCCCTCAAGGGACCTGAGACTCCAGATCTTCAGCCTCTCA
GTTCCAGATTTTGAGGAAGCTGTCCAGGAACCTGTGGCCACAGCCATCCCGTCAGCTGTGACTCCCA
GCAGCTCACCTGTTATCGTGGCCAGAGAGGATGCC
ACGCGTACGCGGCCGCTCGAG - GFP Tag - GTTTAAAC
```



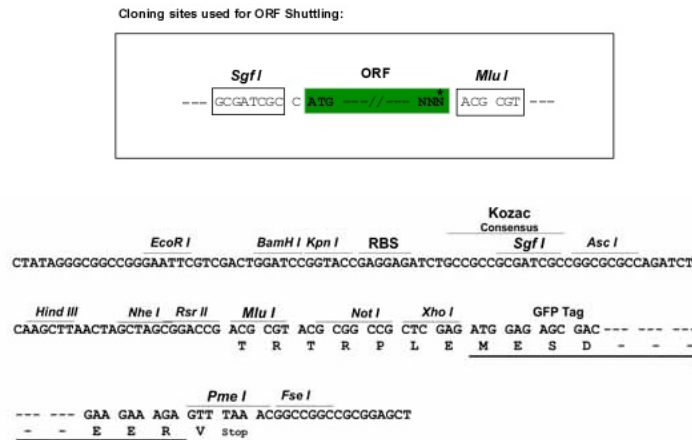
[View online »](#)

Protein Sequence: >Peptide sequence encoded by RG236662
 Blue=ORF Red=Cloning site Green=Tag(s)

MGSAKSVPVTPARPPPHNKLARVADPRSPSAGILRTPIQVESSPQPGLPAGEQLEGLKHAQSDPRSP
 TLGIARTPMKTTSSGPPSPLVKQLSEVFETEDSKSNLPPPEVLPEAPLSELDLPLGTQLSVEEQMPP
 WNQTEFPSKQVFSKEEARQPTETPVASQSSDKPSRDPETPRSSASSVPDFEEAVPGTCGHSHPVSCDSQ
 AAHPVIVAREDA
 TRTRPLEMESDESGLPAMEIECRITGTLNGVEFELVGGEGTPEQGRMTNKMSTKGALTFSPYLLSHV
 MGYGFYHFGTYPSGYENPFLHAINNGGYTNTRIEKYEDGGVLHVSFSYRYEAGRVIGDFKVMGTGFPEP
 SVIFTDKIIRSNAIVEHLHPMGDNDLDGSFTRTFSLRDGGYSSVVDSHMHFKSAIHPSILQNGGPMFA
 FRRVEEDHSNTELGIVEYQHAFKTPDADAGEERV

Restriction Sites: SgfI-MluI

Cloning Scheme:



ACCN: NM_001297603

ORF Size: 657 bp

OTI Disclaimer: The molecular sequence of this clone aligns with the gene accession number as a point of reference only. However, individual transcript sequences of the same gene can differ through naturally occurring variations (e.g. polymorphisms), each with its own valid existence. This clone is substantially in agreement with the reference, but a complete review of all prevailing variants is recommended prior to use. [More info](#)

OTI Annotation: This clone was engineered to express the complete ORF with an expression tag. Expression varies depending on the nature of the gene.

Components: The ORF clone is ion-exchange column purified and shipped in a 2D barcoded Matrix tube containing 10ug of transfection-ready, dried plasmid DNA (reconstitute with 100 ul of water).

RefSeq: [NM_001297603.3](#)

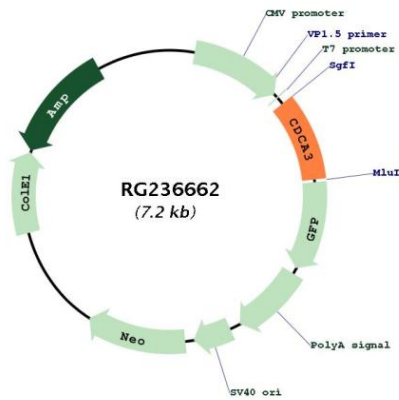
RefSeq Size: 1625 bp

RefSeq ORF: 660 bp

Locus ID: 83461
UniProt ID: [Q99618](#)
Cytogenetics: 12p13.31
MW: 23.7 kDa

Gene Summary: F-box-like protein which is required for entry into mitosis. Acts by participating in E3 ligase complexes that mediate the ubiquitination and degradation of WEE1 kinase at G2/M phase (By similarity).[UniProtKB/Swiss-Prot Function]

Product images:



Circular map for RG236662