

## Product datasheet for **RG236649**

### GRAP2 (NM\_001291828) Human Tagged ORF Clone

#### Product data:

Product Type:	Expression Plasmids
Product Name:	GRAP2 (NM_001291828) Human Tagged ORF Clone
Tag:	TurboGFP
Symbol:	GRAP2
Synonyms:	GADS; GRAP-2; GRB2L; GRBLG; GrbX; Grf40; GRID; GRPL; Mona; P38
Mammalian Cell Selection:	Neomycin
Vector:	pCMV6-AC-GFP (PS100010)
E. coli Selection:	Ampicillin (100 ug/mL)
ORF Nucleotide Sequence:	>RG236649 representing NM_001291828. Blue=ORF Red=Cloning site Green=Tag(s)

```
GCTCGTTTAGTGAACCGTCAGAATTTTGTAAACGACTCACTATAGGGCGCCGGGAATTCGTCGACTG
GATCCGGTACCGAGGAGATCTGCCGCCGCGATCGCC
ATGGTTTCACGAAGGCCTCTCTCGACACCAGGCAGAGAACTTACTCATGGGCAAGGAGGTTGGCTTCTT
CATCATCCGGGCCAGCCAGAGCTCCCCAGGGGACTTCTCCATCTCTGTCAGGGTCACCGGGCAACAGC
CTGGACCGGAGGTCCCAGGGAGGCCACACCTCAGTGGGGCTGTGGGAGAAGAAATCCGACCTTCGATG
AACCGGAAGCTGTCGGATCACCCCGGACCTTCCCCTGCAGCAGCACCAGCACCAGCCACAGCCTCCG
CAATATGCCCCAGCGCCCAGCAGCTGCAGCAGCCCCACAGCAGCGATATCTGCAGCACCACCATTTTC
CACCAGGAACGCCGAGGAGGCAGCCTTGACATAAATGATGGGCATTGTGGCACCGCTTGGGCAGTGAA
ATGAATGCGGCCCTCATGCATCGGAGACACAGACCCAGTGCAGCTCCAGGCGGCAGGGCGAGTGCAGG
TGGGCCCGGGCGCTGTATGACTTTGAGGCCCTGGAGGATGACGAGCTGGGGTTCCACAGCGGGGAGGTG
GTGGAGGTCTGGATAGCTCCAACCCATCTGGTGGACCGCCGCTGCACAACAAGCTGGGCCTCTTC
CCTGCCAACTACGTGGCACCCATGACCCGA
ACGCGTACGCGGCCGCTCGAG - GFP Tag - GTTAAAC
```



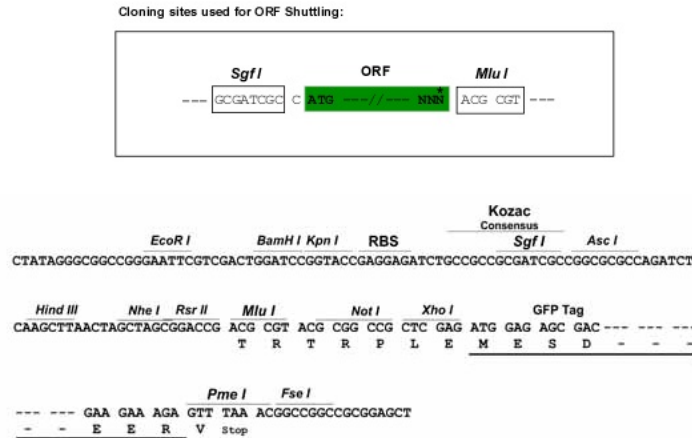
[View online »](#)

**Protein Sequence:** >Peptide sequence encoded by RG236649  
 Blue=ORF Red=Cloning site Green=Tag(s)

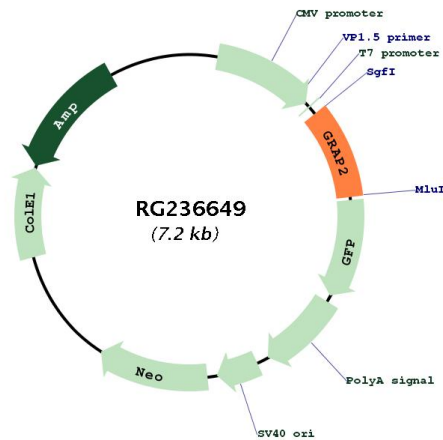
MYSRRPLSTPGRELTHGQGGWLLHHPGQPELPRGLLHLCQGHRGNLDRRSQGGPHLSGAVGEEIRPSM  
 NRKLSDHPTLPLQQHQHPQPPQYAPAPQQLQPPQQRYLQHHHFHQERRGSLDINDGHCGLGSE  
 MNAALMHRRHDPVQLQAAGRVRWARALYDFEALEDDELGFHSGEVVEVLDSNPSWWTGRLHNKLGFL  
 PANYVAPMTR  
 TRTRPLEMESDESGLPAMEIECRITGTLNGVEFELVGGEGTPEQGRMTNKMSTKGALTFSPYLLSHV  
 MGYGFYHFGTYPSGYENPFLHAINNGGYTNTRIEKYEDGGVLHVSFSYRYEAGRVIIGDFKVMGTGFPED  
 SVIFTDKIIRSNAVHHLPMGDNDLDGSFTRTFSLRDGGYSSVVDSHMHFKSAIHPSILQNGGPMFA  
 FRRVEEDHSNTELGIVEYQHAFKTPDADAGEERV

**Restriction Sites:** SgfI-MluI

**Cloning Scheme:**



**Plasmid Map:**



**ACCN:** NM\_001291828

<b>ORF Size:</b>	651 bp
<b>OTI Disclaimer:</b>	The molecular sequence of this clone aligns with the gene accession number as a point of reference only. However, individual transcript sequences of the same gene can differ through naturally occurring variations (e.g. polymorphisms), each with its own valid existence. This clone is substantially in agreement with the reference, but a complete review of all prevailing variants is recommended prior to use. <a href="#">More info</a>
<b>OTI Annotation:</b>	This clone was engineered to express the complete ORF with an expression tag. Expression varies depending on the nature of the gene.
<b>Components:</b>	The ORF clone is ion-exchange column purified and shipped in a 2D barcoded Matrix tube containing 10ug of transfection-ready, dried plasmid DNA (reconstitute with 100 ul of water).
<b>RefSeq:</b>	<a href="#">NM_001291828.2</a>
<b>RefSeq Size:</b>	3138 bp
<b>RefSeq ORF:</b>	654 bp
<b>Locus ID:</b>	9402
<b>UniProt ID:</b>	<a href="#">O75791</a>
<b>Cytogenetics:</b>	22q13.1
<b>Protein Families:</b>	Druggable Genome
<b>Protein Pathways:</b>	T cell receptor signaling pathway
<b>MW:</b>	24.8 kDa
<b>Gene Summary:</b>	This gene encodes a member of the GRB2/Sem5/Drk family. This member is an adaptor-like protein involved in leukocyte-specific protein-tyrosine kinase signaling. Like its related family member, GRB2-related adaptor protein (GRAP), this protein contains an SH2 domain flanked by two SH3 domains. This protein interacts with other proteins, such as GRB2-associated binding protein 1 (GAB1) and the SLP-76 leukocyte protein (LCP2), through its SH3 domains. Multiple alternatively spliced transcript variants encoding distinct isoforms have been found for this gene. [provided by RefSeq, Apr 2014]