

Product datasheet for **RG236642**

PTCD2 (NM_001284404) Human Tagged ORF Clone

Product data:

Product Type: Expression Plasmids
Product Name: PTCD2 (NM_001284404) Human Tagged ORF Clone
Tag: TurboGFP
Symbol: PTCD2
Mammalian Cell Selection: Neomycin
Vector: pCMV6-AC-GFP (PS100010)
E. coli Selection: Ampicillin (100 ug/mL)
ORF Nucleotide Sequence: >RG236642 representing NM_001284404.
 Blue=ORF Red=Cloning site Green=Tag(s)

```
GCTCGTTTAGTGAACCGTCAGAATTTTGTAAACGACTCACTATAGGGCGGCCGGGAATTCGTCGACTG
GATCCGGTACCGAGGAGATCTGCCGCCGCGATCGCC
ATGTGGAAGTGGCTAAAAATGTCATTTACAGGTGCTTTGCAAGTATTGATAGAGATGAAAAACCAAGAT
GTGAAGTTCACCAAGATACCTATGTTCTTGTCTTTGCAATTTGCTACAACTGAATAGCCCTGAGTCT
TTCAAATCTGTACTACATTAAGAGAAGAAGCTCTACTCAAAGGAGAAATTTCTCCAGGAGAGCATCC
TGTTTCGCTGTGGCATTAGCTCTGAATCAGAATGAGATGGCAAAAGCTGTGTCCATTTTTTCTCAAATC
ATGAATCCAGAAAGCATAGCCTGCATTAATTTAAATATTATAATCCATATCCAGTCAAATATGTTGGAA
AACCTGATAAAGACTCTAAAAATGCTGCAGAAGGAAATTTATCAAATTTGTGAAAAGACATGTGTTTC
TCGGAGGAAGTGCTGGCCAAAGTGAGGGAAAAAGTGAAGGATGTGCTGCCCTTGTGGCCAAATTTGAT
GAGATCTATGGGACACTGCACATCACTGGCCAGGTCACCACTGATTCTTTGGATGCTGTGCTCTGCCAC
ACCCCCAGGGACAGGAAATCTCACAGTTGCTATTAACAAGAGGATGGTCAGCCGTCGCACCTCCAG
CCACTCAGCCAGTCCCTGTTGGCTGAG
ACGCGTACGCGGCCGCTCGAG - GFP Tag - GTTTAAAC
```

Protein Sequence: >Peptide sequence encoded by RG236642
 Blue=ORF Red=Cloning site Green=Tag(s)

```
MWNWLKMSFTGALQVLIEMKNQDVKFTKDTYVLAFAICYKLNPSFVKICTTLREEALLKGEILSRRAS
CFAVALALNQEMAKAVSIFSQIMNPESIAINLNIIHIQSNMLENLIKTLKNAEENLTKFVVRHVF
SEEVLAQVREKVKDVPALVAKFDEIYGLHITGQVTTDSLDAVLCHTPRDRKSHTLLLNKRMVSRRTFQ
PLSQLLAE
TRTRPLEMESDESGLPAMEIECRITGTLNGVEFELVGGEGTPEQGRMTNKMSTKGALTFSPYLLSHV
MGYGFYHFGTYPSGYENPFLHAINNGGYNTRIEKYEDGGVLHVSFSYRYEAGRVIGDFKVMGTGFPED
SVIFTDKIIRSNAIVEHLHPMGDNDLDGSFTRFSLRDGGYSSVVDSHMHFKSAIHPSILQNGGPMFA
FRRVEEDHSNTELGIVEYQHAFKTPDADAGEERY
```

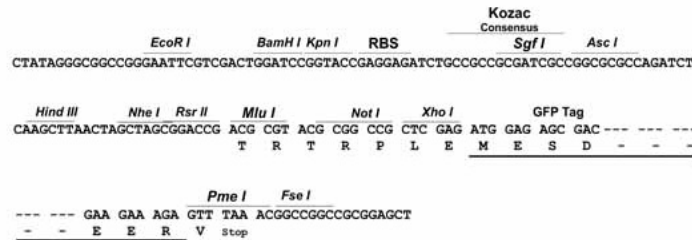
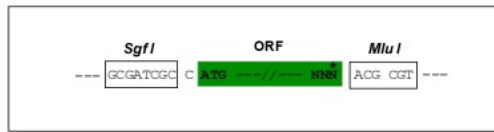


[View online »](#)

Restriction Sites: SgfI-MluI

Cloning Scheme:

Cloning sites used for ORF Shutting:



ACCN: NM_001284404

ORF Size: 648 bp

OTI Disclaimer: The molecular sequence of this clone aligns with the gene accession number as a point of reference only. However, individual transcript sequences of the same gene can differ through naturally occurring variations (e.g. polymorphisms), each with its own valid existence. This clone is substantially in agreement with the reference, but a complete review of all prevailing variants is recommended prior to use. [More info](#)

OTI Annotation: This clone was engineered to express the complete ORF with an expression tag. Expression varies depending on the nature of the gene.

Components: The ORF clone is ion-exchange column purified and shipped in a 2D barcoded Matrix tube containing 10ug of transfection-ready, dried plasmid DNA (reconstitute with 100 ul of water).

RefSeq: [NM_001284404.1](#), [NP_001271333.1](#)

RefSeq Size: 1931 bp

RefSeq ORF: 651 bp

Locus ID: 79810

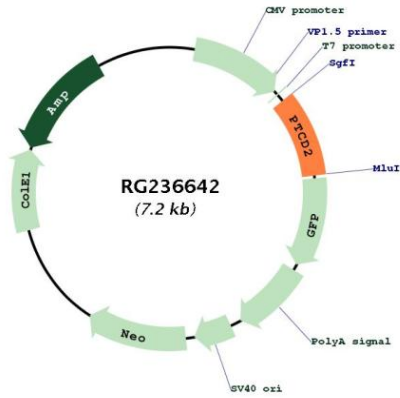
UniProt ID: [Q8WV60](#)

Cytogenetics: 5q13.2

MW: 24.9 kDa

Gene Summary: Involved in mitochondrial RNA maturation and mitochondrial respiratory chain function. [UniProtKB/Swiss-Prot Function]

Product images:



Circular map for RG236642