

Product datasheet for **RG236626**

C22orf25 (TANGO2) (NM_001283186) Human Tagged ORF Clone

Product data:

Product Type:	Expression Plasmids
Product Name:	C22orf25 (TANGO2) (NM_001283186) Human Tagged ORF Clone
Tag:	TurboGFP
Symbol:	C22orf25
Synonyms:	C22orf25; MECRCN
Mammalian Cell Selection:	Neomycin
Vector:	pCMV6-AC-GFP (PS100010)
E. coli Selection:	Ampicillin (100 ug/mL)
ORF Nucleotide Sequence:	>RG236626 representing NM_001283186. Blue=ORF Red=Cloning site Green=Tag(s)

```
GCTCGTTTAGTGAACCGTCAGAATTTGTAAATACGACTCACTATAGGGCGGCCGGGAATTCGTCGACTG
GATCCGGTACCGAGGAGATCTGCCGCCGCGATCGCC
ATGTGCATCATCTTCTTTAAGTTTGATCCTCGCCCTGTTTCCAAAAACGCGTACAGGCTCATCTTGGCA
GCCAACAGGGATGAATTCTACAGCCGACCCTCCAAGTTAGCTGACTTCTGGGGGAACAACAACGAGATC
CTCAGTGGGCTGGACATGGAGGAAGGCAAGGAAGGAGGCACATGGCTGGGCATCAGCACACGTGGCAAG
CTGGCAGCACTACCAACTACCTGCAGCCGAGCTGGACTGGCAGGCCGAGGGCGAGGCACCTACGGG
CTGAGCAACGCGCTGCTGGAGACTCCCTGGAGGAAGCTGTGCTTTGGGAAGCAGCTCTTCCTGGAGGCT
GTGGAACGGAGCCAGGCGCTGCCAAGGATGTGCTCATCGCCAGCCTCCTGGATGTGCTCAACAATGAA
GAGGCGCAGCTGCCAGACCCGGCCATCGAGGACCAGGGTGGGGAGTACGTGCAGCCCATGCTGAGCAAG
TACGCGGCTGTGTGCGTGCCTGCCCTGGCTACGGCACCAGAACCAACTATCATCCTGGTAGATGCG
GACGGCCACGTGACCTTCACTGAGCGTAGCATGATGGACAAGGACCTCTCCCACTGGGAGACCAGAACC
TATGAGTTCACACTGCAGAGC
AGGCGACCGACGCGTACGCGGCCGCTCGAG - GFP Tag - GTTTAAAC
```



[View online »](#)

Protein Sequence: >Peptide sequence encoded by RG236626
 Blue=ORF Red=Cloning site Green=Tag(s)

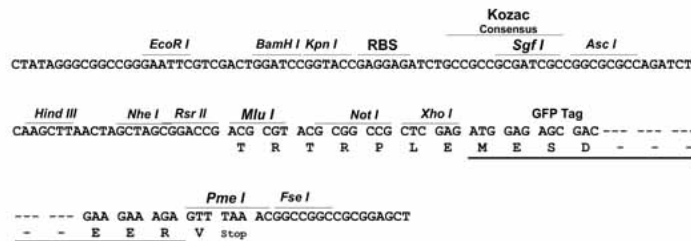
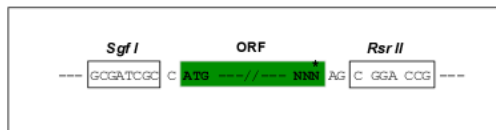
MCIFFKFDPRPVSKNAYRLILAANRDEFYSRPSKLADFWGNNEILSGLDMEEGKEGGTWLGISTRGK
 LAALTNYLQPQLDWQARGRGTYGLSNALLETPWRKLCFGKQLFLEAVERSQUALPKDVLIASLLDVLNNE
 EAQLPDAIEDQGGGEYVQPMLSKYAAVCVRCPGYGTTRNTIILVDADGHVTFTERSMMDKDLSHWETRT
 YEFTLQS

SGPTRTRPLEMESDESGLPAMEIECRITGTLNGVEFELVGGEGTPEQGRMTNKMKSTKGALTFSPYLL
 SHVMGYGFYHFGTYPSTYENPFLHAINNGGYTNTRIEKYEDGGVLHVSFSYRYEAGRIVIGDFKVMGTGF
 PEDSVIFTDKIIRSNTAVEHLHPMGDNDLDGSFTRTFLRDGGYSSVVDSHMHFKSAIHPSILQNGGP
 MFAFRRVEEDHSNTELGIVEYQHAFKTPDADAGEERV

Restriction Sites: SgfI-RsrII

Cloning Scheme:

Cloning sites used for ORF Shuttling:



ACCN: NM_001283186

ORF Size: 642 bp

OTI Disclaimer: The molecular sequence of this clone aligns with the gene accession number as a point of reference only. However, individual transcript sequences of the same gene can differ through naturally occurring variations (e.g. polymorphisms), each with its own valid existence. This clone is substantially in agreement with the reference, but a complete review of all prevailing variants is recommended prior to use. [More info](#)

OTI Annotation: This clone was engineered to express the complete ORF with an expression tag. Expression varies depending on the nature of the gene.

Components: The ORF clone is ion-exchange column purified and shipped in a 2D barcoded Matrix tube containing 10ug of transfection-ready, dried plasmid DNA (reconstitute with 100 ul of water).

RefSeq: [NM_001283186.2](#), [NP_001270115.1](#)

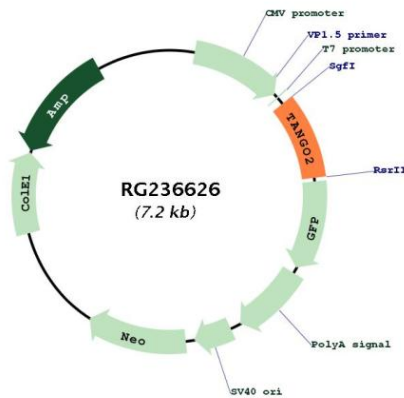
RefSeq Size: 2031 bp

RefSeq ORF: 645 bp

Locus ID: 128989
UniProt ID: [Q6ICL3](#)
Cytogenetics: 22q11.21
MW: 24.6 kDa

Gene Summary: This gene belongs to the transport and Golgi organization family, whose members are predicted to play roles in secretory protein loading in the endoplasmic reticulum. Depletion of this gene in *Drosophila* S2 cells causes fusion of the Golgi with the ER. In mouse tissue culture cells, this protein co-localizes with a mitochondrially targeted mCherry protein and displays very low levels of co-localization with Golgi and peroxisomes. Allelic variants of this gene are associated with rhabdomyolysis, metabolic crises with encephalopathy, and cardiac arrhythmia. [provided by RefSeq, Apr 2016]

Product images:



Circular map for RG236626