

Product datasheet for **RG236620**

HEY1 (NM_001282851) Human Tagged ORF Clone

Product data:

Product Type:	Expression Plasmids
Product Name:	HEY1 (NM_001282851) Human Tagged ORF Clone
Tag:	TurboGFP
Symbol:	HEY1
Synonyms:	BHLHb31; CHF2; HERP2; HESR1; hHRT1; HRT-1; NERP2; OAF1
Mammalian Cell Selection:	Neomycin
Vector:	pCMV6-AC-GFP (PS100010)
E. coli Selection:	Ampicillin (100 ug/mL)
ORF Nucleotide Sequence:	>RG236620 representing NM_001282851. Blue=ORF Red=Cloning site Green=Tag(s)

```
GCTCGTTTAGTGAACCGTCAGAATTTGTAAACGACTCACTATAGGGCGCCGGGAATTCGTCGACTG
GATCCGGTACCGAGGAGATCTGCCGCCCGGATCGCC
ATGCCTTTGAGGAAAGAAATGATTCTGGTTAAGTAAAGGAAACCTAACGGGAGACCAAGGTTACTTT
GACGCGCACGCCCTTGCTATGGACTATCGGAGTTTGGGATTTGGGAATGCCTGGCAGAAGTTGCGCGT
TATCTGAGCATCATTGAAGGACTAGATGCCTCTGACCCGCTTCGAGTTCGACTGGTTTCGCATCTCAAC
AACTACGCTTCCCAGCGGAAGCCGCGAGCGGCCACGCGGGCCTCGGACACATTCCTGGGGGACC
GTCTTCGGACATACCCGCACATCGCGCACCCGCTGTTGCTGCCCGAAGCGCCACGGGAACCGGGC
ACCACGGCCTCACCCACGAACCGCACCACAGGGCAGGCTGGGCTCGGCACATCCGGAGGCGCCTGCT
TTGCGAGCGCCCTAGCGGCAGCCTCGGACCGGTGCTCCCTGTGGTCACCTCCGCTCCAACTGTG
CCGCTCTGCTCTCCTCAGTGGCCTCCCTGTGGCCTTCCCTTCTTTTCGGCTCCTTCCACTTACTG
TCTCCAATGCACTGAGCCCTTCAGCACCCACGCAGGCTGCAAACCTTGCAAGCCCTATAGACCTTGG
GGGACGGAGATCGGAGCTTTT
ACGCGTACGCGGCCGCTCGAG - GFP Tag - GTTAAAC
```



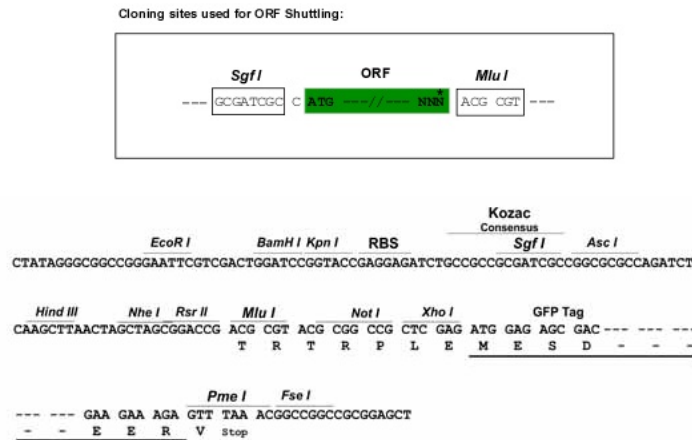
[View online »](#)

Protein Sequence: >Peptide sequence encoded by RG236620
 Blue=ORF Red=Cloning site Green=Tag(s)

MPL EERNVFWLSKGNLTGDQGYFDAHALAMDYRSLGFRECLAEVARYLSIIEGLDASDPLRVRLVSHLN
 NYASQREAAASGAHAGLGHIPWGTVFGHHPHIAHPLLLPQNGHGNAGTTASPTEPHHQGRGSAHPEAPA
 LRAPPSGSLGPVLPVVTASAKLSPPLLSSVASLSAFPFSFGSFGHLLSPNALSPSAPTQAANLGKPYRPW
 GTEIGAF
 TRTRPLEMESDESGLPAMEIECRITGTLNGVEFELVGGEGTPEQGRMTNKMSTKGALTFSPYLLSHV
 MGYGFYHFGTYPSTYENPFLHAINNGGYTNTRIEKYEDGGVLHVSFSYRYEAGRVIGDFKVMGTGFPEP
 SVIFTDKIIRS NATVEHLHPMGDNDLDGSFTRTFSLRDGGYSSVVD SHMHFKSAIHPSILQNGGPMFA
 FRRVEEDHSNTELGIVEYQHAFKTPDADAGEERV

Restriction Sites: SgfI-MluI

Cloning Scheme:



ACCN: NM_001282851

ORF Size: 642 bp

OTI Disclaimer: The molecular sequence of this clone aligns with the gene accession number as a point of reference only. However, individual transcript sequences of the same gene can differ through naturally occurring variations (e.g. polymorphisms), each with its own valid existence. This clone is substantially in agreement with the reference, but a complete review of all prevailing variants is recommended prior to use. [More info](#)

OTI Annotation: This clone was engineered to express the complete ORF with an expression tag. Expression varies depending on the nature of the gene.

Components: The ORF clone is ion-exchange column purified and shipped in a 2D barcoded Matrix tube containing 10ug of transfection-ready, dried plasmid DNA (reconstitute with 100 ul of water).

RefSeq: [NM_001282851.1](#), [NP_001269780.1](#)

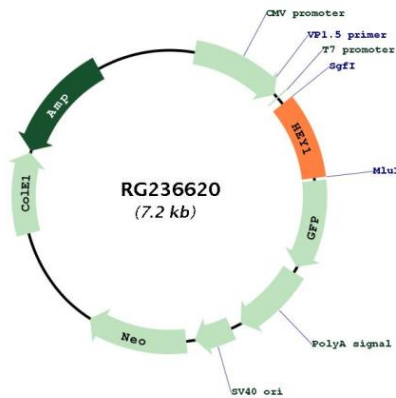
RefSeq Size: 2052 bp

RefSeq ORF: 645 bp

Locus ID: 23462
UniProt ID: [Q9Y5J3](#)
Cytogenetics: 8q21.13
Protein Families: Druggable Genome, Transcription Factors
MW: 23.1 kDa

Gene Summary: This gene encodes a nuclear protein belonging to the hairy and enhancer of split-related (HESR) family of basic helix-loop-helix (bHLH)-type transcriptional repressors. Expression of this gene is induced by the Notch and c-Jun signal transduction pathways. Two similar and redundant genes in mouse are required for embryonic cardiovascular development, and are also implicated in neurogenesis and somitogenesis. Alternative splicing results in multiple transcript variants. [provided by RefSeq, Jul 2008]

Product images:



Circular map for RG236620