

Product datasheet for **RG236613**

BCL7B (NM_001301061) Human Tagged ORF Clone

Product data:

Product Type: Expression Plasmids
Product Name: BCL7B (NM_001301061) Human Tagged ORF Clone
Tag: TurboGFP
Symbol: BCL7B
Mammalian Cell Selection: Neomycin
Vector: pCMV6-AC-GFP (PS100010)
E. coli Selection: Ampicillin (100 ug/mL)
ORF Nucleotide Sequence: >RG236613 representing NM_001301061.
 Blue=ORF Red=Cloning site Green=Tag(s)

```
GCTCGTTTAGTGAACCGTCAGAATTTTGTAAATACGACTCACTATAGGGCGGCCGGGAATTCGTCGACTG
GATCCGGTACCGAGGAGATCTGCCGCCGCGATCGCC
ATGACGGAATCTCGCTCTGTCACCAGGCTGGAGTGCATTGGCGCAATCTCGGCTCACTGCAACCTCTG
CCTCTCAGGTTCAAGCAATTCTCCTGCCTCAGCCTCCTGAGTAGCTGGGACTACAGGGAGAAGAAGTGG
GTGACTGTGGGTGACACGTCCCTGAGGATATTTAAGTGGGTTCTGTGACAGACAGCAAGGAGAAAGAA
AAGTCAAATCGAACAGTTCAGCAGCCCCGAGAACCTAATGGCTTTCCTTCTGATGCCTCAGCCAATTCC
TCTCTCCTTCTTGAATTCAGGACGAAAACAGCAACCAGAGTCCGTGTCTGACGTCTATCAGCTTAAG
GTGGACAGCAGCACCAACTCAAGCCCCAGCCCCCAGCAGAGTCCCTGAGCCACACACACCTCC
GACTTCCGACCGGATGACTCCCAGCCCCCAACGCTGGGCCAGGAGATCCTGGAGGAGCCCTCCCTGCC
TCCTCGGAAGTTGCTGATGAACCTCCTACCCTACCAAGGAAGAACCAGTCCACTAGAGACACAGGTC
GTTGAGGAAGAGGAAGACTCAGGTGCCCGCCCTGAAGCGCTTCTGTGTGGACCAACCCACAGTGCCG
CAGACGGCGTCAGAAAAGC
ACGCGTACGCGGCCGCTCGAG - GFP Tag - GTTTAAAC
```

Protein Sequence: >Peptide sequence encoded by RG236613
 Blue=ORF Red=Cloning site Green=Tag(s)

```
MTESRSVTQAGVHWRNLGSLQPLPLRFKQFSCLSLLSSWDYREKKWVTVGDTSLRIFKWPVPTDSKEKE
KSKSNSSAAREPNGFSPDASANSLLLEFQDENSNQSSVSDVYQLKVDSSNTSSPSPQQSESLSPAHTS
DFRTDDSQPPTLQGEILEEPSLPSSEVADEPPTLTKEEPVPLETQVVEEEDSGAPPLKRFKQVPTVP
QTASES
TRTRPLEMESDESGLPAMEIECRITGTLNGVEFELVGGEGTPEQGRMTNKMSTKGALTFSPYLLSHV
MGYGFYHFGTYPSGYENPFLHAINNGGYNTRIEKYEDGGVLHVSFSYRYEAGRVIGDFKVMGTGFPE
SVIFTDKIIRSNAIVEHLHPMGDNDLDGSFTRFSLRDGGYSSVVDSHMHFKSAIHPSILQNGGPMFA
FRRVEEDHSNTELGIVEYQHAFKTPDADAGEERY
```

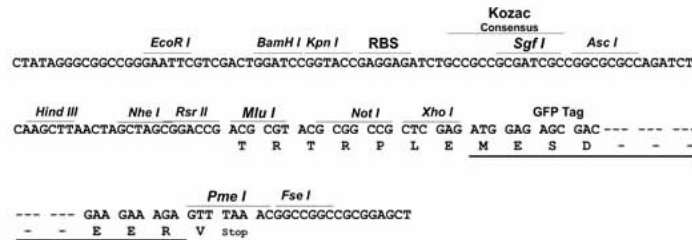
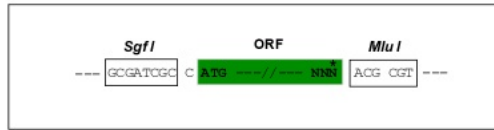


[View online »](#)

Restriction Sites: Sgfl-MluI

Cloning Scheme:

Cloning sites used for ORF Shutting:



ACCN: NM_001301061

ORF Size: 639 bp

OTI Disclaimer: The molecular sequence of this clone aligns with the gene accession number as a point of reference only. However, individual transcript sequences of the same gene can differ through naturally occurring variations (e.g. polymorphisms), each with its own valid existence. This clone is substantially in agreement with the reference, but a complete review of all prevailing variants is recommended prior to use. [More info](#)

OTI Annotation: This clone was engineered to express the complete ORF with an expression tag. Expression varies depending on the nature of the gene.

Components: The ORF clone is ion-exchange column purified and shipped in a 2D barcoded Matrix tube containing 10ug of transfection-ready, dried plasmid DNA (reconstitute with 100 ul of water).

RefSeq: [NM_001301061.2](#)

RefSeq Size: 1851 bp

RefSeq ORF: 642 bp

Locus ID: 9275

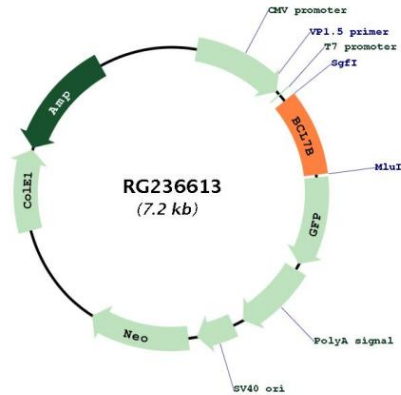
UniProt ID: [Q9BQE9](#)

Cytogenetics: 7q11.23

MW: 23.9 kDa

Gene Summary:

This gene encodes a member of the BCL7 family including BCL7A, BCL7B and BCL7C proteins. This member is BCL7B, which contains a region that is highly similar to the N-terminal segment of BCL7A or BCL7C proteins. The BCL7A protein is encoded by the gene known to be directly involved in a three-way gene translocation in a Burkitt lymphoma cell line. This gene is located at a chromosomal region commonly deleted in Williams syndrome. This gene is highly conserved from *C. elegans* to human. Multiple alternatively spliced transcript variants have been found for this gene. [provided by RefSeq, Oct 2010]

Product images:

Circular map for RG236613