

## Product datasheet for **RG236605**

### Casein Kinase 2 beta (CSNK2B) (NM\_001282385) Human Tagged ORF Clone

#### Product data:

Product Type:	Expression Plasmids
Product Name:	Casein Kinase 2 beta (CSNK2B) (NM_001282385) Human Tagged ORF Clone
Tag:	TurboGFP
Symbol:	CSNK2B
Synonyms:	CK2B; CK2N; Ckb1; Ckb2; CSK2B; G5A; POBINDS
Mammalian Cell Selection:	Neomycin
Vector:	pCMV6-AC-GFP (PS100010)
E. coli Selection:	Ampicillin (100 ug/mL)
ORF Nucleotide Sequence:	>RG236605 representing NM_001282385. Blue=ORF Red=Cloning site Green=Tag(s)

```
GCTCGTTTAGTGAACCGTCAGAATTTTGTAAACGACTCACTATAGGGCGCCGGGAATTCGTCGACTG
GATCCGGTACCGAGGAGATCTGCCGCCGCGATCGCC
ATGAGCAGCTCAGAGGAGGTGCTCTGGATTTCTGGTTCTGTGGGCTCCGTGGCAATGAATTCCTCTGT
GAAGTGGATGAAGACTACATCCAGGACAAATTTAATCTTACTGGACTCAATGAGCAGGTCCCTCACTAT
CGACAAGCTCTAGACATGATCTTGGACCTGGAGCCTGATGAAGAAGTGAAGACAACCCCAACCAGAGT
GACCTGATTGAGCAGGCAGCCGAGATGCTTTATGGATTGATCCACGCCGCTACATCCTTACCAACCGT
GGCATCGCCAGATGTTGAAAAGTACCAGCAAGGAGACTTTGGTTACTGTCCTCGTGTGTACTGTGAG
AACCAGCCAATGCTTCCCATTGACATCCCAGGTGAAGCCATGGTGAAGCTCTACTGCCCAAGTGCATG
GATGTGTACACACCCAAGTCATCAAGACACCATCACACGGATGGCGCCTACTTCGGCACTGGTTTCCT
CACATGCTCTTATGGTGCATCCCGAGTACCGGCCAAGAGACCTGCCAACCAGTTTGTGCCAGGCTC
TACGGTTTCAAGATCCATCCGATGGCCTACCAGCTGCAGCTCCAAGCCGCCAGCAACTTCAAGAGCCCA
GTCAAGACGATTCGC
ACGCGTACGCGGCCGCTCGAG - GFP Tag - GTTTAAAC
```



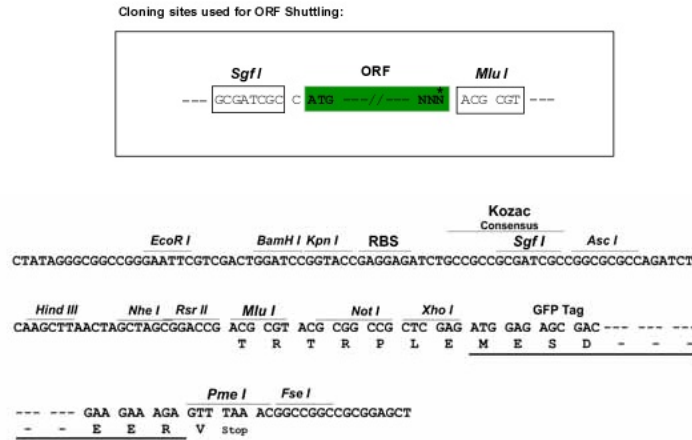
[View online »](#)

Protein Sequence: >Peptide sequence encoded by RG236605  
 Blue=ORF Red=Cloning site Green=Tag(s)

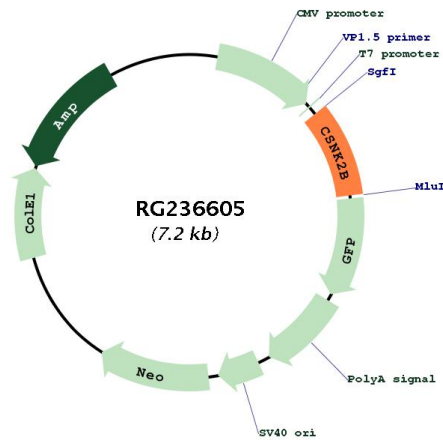
MSSSEEVSWISWFCGLRGNEFFCEVDEDIYQDKFNL TGLNEQVPHYRQALDMLDLEPDEELEDNPNQS  
 DLIEQAAEMLYGLIHARYILTNRGIAQMLEKYQQGDFGYCPRVYCNQMLPIDIPGEAMVKLYCPKCM  
 DVYTPKSSRRHHHTDGAYFGTGFPHMLFMVHPEYRKRANQFVPRLYGFKIHPMAYQLQLQAASNFKSP  
 VKTIR  
**TRTRPLEMESDESGLPAMEIECRITGTLNGVEFELVGGEGTPEQGRMTNKMSTKGALTFSPYLLSHV**  
 MGYGFYHFGTYPSTYENPFLHAINNGGYTNTRIEKYEDGGVLHVSFSYRYEAGRVIGDFKVMGTGFPED  
 SVIFTDKIIRSNAIVEHLHPMGDNDLDGSFTRTFSLRDGGYSSVVD SHMHFKSAIHPSILQNGGPMFA  
 FRRVEEDHSNTELGIVEYQHAFKTPDADAGEERV

Restriction Sites: SgfI-MluI

Cloning Scheme:



Plasmid Map:



ACCN: NM\_001282385

<b>ORF Size:</b>	636 bp
<b>OTI Disclaimer:</b>	The molecular sequence of this clone aligns with the gene accession number as a point of reference only. However, individual transcript sequences of the same gene can differ through naturally occurring variations (e.g. polymorphisms), each with its own valid existence. This clone is substantially in agreement with the reference, but a complete review of all prevailing variants is recommended prior to use. <a href="#">More info</a>
<b>OTI Annotation:</b>	This clone was engineered to express the complete ORF with an expression tag. Expression varies depending on the nature of the gene.
<b>Components:</b>	The ORF clone is ion-exchange column purified and shipped in a 2D barcoded Matrix tube containing 10ug of transfection-ready, dried plasmid DNA (reconstitute with 100 ul of water).
<b>RefSeq:</b>	<a href="#">NM_001282385.1</a> , <a href="#">NP_001269314.1</a>
<b>RefSeq Size:</b>	1140 bp
<b>RefSeq ORF:</b>	639 bp
<b>Locus ID:</b>	1460
<b>UniProt ID:</b>	<a href="#">P67870</a>
<b>Cytogenetics:</b>	6p21.33
<b>Protein Families:</b>	Druggable Genome
<b>Protein Pathways:</b>	Adherens junction, Tight junction, Wnt signaling pathway
<b>MW:</b>	25.1 kDa
<b>Gene Summary:</b>	This gene encodes the beta subunit of casein kinase II, a ubiquitous protein kinase which regulates metabolic pathways, signal transduction, transcription, translation, and replication. The enzyme is composed of three subunits, alpha, alpha prime and beta, which form a tetrameric holoenzyme. The alpha and alpha prime subunits are catalytic, while the beta subunit serves regulatory functions. The enzyme localizes to the endoplasmic reticulum and the Golgi apparatus. Two transcript variants encoding different isoforms have been found for this gene. [provided by RefSeq, Sep 2013]