

Product datasheet for **RG236575**

Citrate transport protein (SLC25A1) (NM_001287387) Human Tagged ORF Clone

Product data:

Product Type:	Expression Plasmids
Product Name:	Citrate transport protein (SLC25A1) (NM_001287387) Human Tagged ORF Clone
Tag:	TurboGFP
Symbol:	SLC25A1
Synonyms:	CMS23; CTP; D2L2AD; SEA; SLC20A3
Mammalian Cell Selection:	Neomycin
Vector:	pCMV6-AC-GFP (PS100010)
E. coli Selection:	Ampicillin (100 ug/mL)
ORF Nucleotide Sequence:	>RG236575 representing NM_001287387. Blue=ORF Red=Cloning site Green=Tag(s)

```
GCTCGTTTAGTGAACCGTCAGAATTTGTAAACGACTCACTATAGGGCGCCGGGAATTCGTCGACTG
GATCCGGTACCGAGGAGATCTGCCGCCGCGATCGCC
ATGTTTCGAGTTCCTCAGCAACCACATGCGGGATGCCAGGGACGGCTGGACAGCACGCGTGGGCTGCTG
TGCGGCCCTGGGCGCTGGCGTGGCCGAGGCCGTGGTGGTCTGTGCCCATGGAGACCATCAAGGTGAAG
TTCATCCACGACCAGACCTCCCCAAACCCCAAGTACAGAGGATTCTCCACGGGGTTAGGGAGATTGTG
CGGGAACAAGGGCTGAAGGGGACGTACCAGGGCCTCACAGCCACTGTCTGAAGCAGGGCTCGAACCAG
GCCATCCGCTTCTTCGTATGACCTCCCTGCGCAACTGGTACCGAGGGGACAACCCCAACAAGCCCATG
AACCTCTGATCACTGGGGTCTTCGGAGCTATTGCAGGCGCAGCCAGTGTCTTTGAAACTCCTCTG
GATGTGATTAAGACCCGGATGCAGGGCCTGGAGGCGCACAAATACCGGAACACGTGGGACTGCGGCTTG
CAGATCCTGAAGAAGGAGGGGCTCAAGGCATTCTACAAGGGCACTGTCCCCGCCTGGGCGGGTCTGC
CTGGATGTGGCCATAGTGTGTCATCTATGATGAAGTGGTGAAGCTGCTCAACAAAGTGTGGAAGACG
GAC
AGCGGACCGACGCGTACGCGGCCGCTCGAG - GFP Tag - GTTAAAC
```



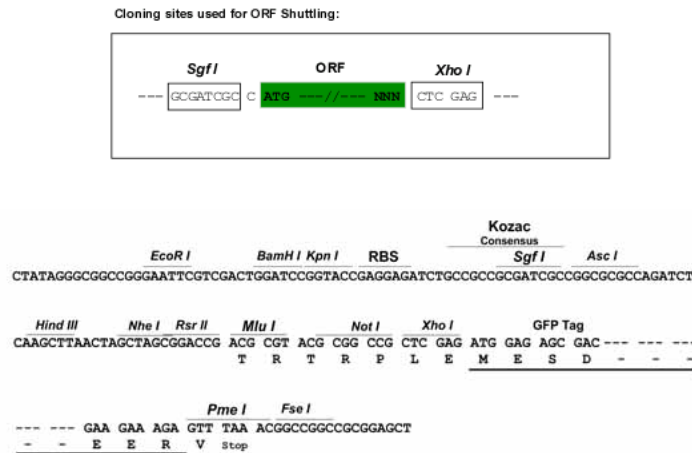
[View online »](#)

Protein Sequence: >Peptide sequence encoded by RG236575
 Blue=ORF Red=Cloning site Green=Tag(s)

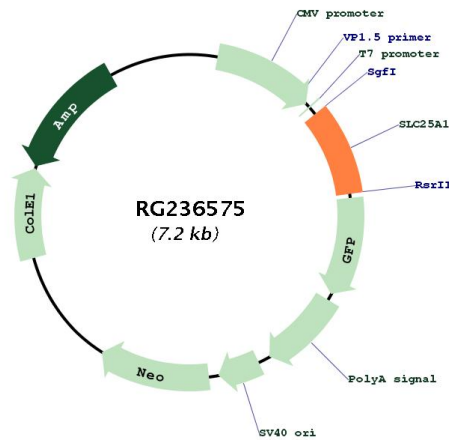
MFEFLSNHMRDAQGRLDSTRGLLCGLGAGVAEAVVVVCPMETIKVKFIHDQTSNPVKYRGFFHGVREIV
 REQGLKGTYYQLTATVLKQGSNQAIRFFVMTSLRNWYRGDNPKNPMNPLITGVFGAIIAGAASVFGNTPL
 DVIKTRMQGLEAHKYRNTWDCGLQILKKEGLKAFYKGTVPRLGRVCLDVAIVFVIYDEVVKLLNKVWKT
 D
 SGPTRTRPLEMESDESGLPAMEIECRITGTLNGVEFELVGGEGTPEQGRMTNKKSTKGALTFSPYLL
 SHVMGYGFYHFGTYPSTYENPFLHAINNGGYTNTRIEKYEDGGVLHVSFSYRYEAGRIGDFKVMGTGF
 PEDSVIFTDKIIRSNTATVEHLHPMGDNDLDGSFTRTFSLRDGGYSSVVDVSHMHFKSAIHPSILQNGGP
 MFAFRRVEEDHSNTELGIVEYQHAFKTPDADAGEERV

Restriction Sites: SgfI-XhoI

Cloning Scheme:



Plasmid Map:



ACCN: NM_001287387

ORF Size:	624 bp
OTI Disclaimer:	The molecular sequence of this clone aligns with the gene accession number as a point of reference only. However, individual transcript sequences of the same gene can differ through naturally occurring variations (e.g. polymorphisms), each with its own valid existence. This clone is substantially in agreement with the reference, but a complete review of all prevailing variants is recommended prior to use. More info
OTI Annotation:	This clone was engineered to express the complete ORF with an expression tag. Expression varies depending on the nature of the gene.
Components:	The ORF clone is ion-exchange column purified and shipped in a 2D barcoded Matrix tube containing 10ug of transfection-ready, dried plasmid DNA (reconstitute with 100 ul of water).
RefSeq:	NM_001287387.2
RefSeq Size:	1516 bp
RefSeq ORF:	627 bp
Locus ID:	6576
Cytogenetics:	22q11.21
Protein Families:	Druggable Genome
MW:	23.7 kDa
Gene Summary:	This gene encodes a member of the mitochondrial carrier subfamily of solute carrier proteins. Members of this family include nuclear-encoded transporters that translocate small metabolites across the mitochondrial membrane. This protein regulates the movement of citrate across the inner membranes of the mitochondria. Mutations in this gene have been associated with combined D-2- and L-2-hydroxyglutaric aciduria. Pseudogenes of this gene have been identified on chromosomes 7, 11, 16, and 19. Alternative splicing results in multiple transcript variants. [provided by RefSeq, Dec 2013]