

## Product datasheet for **RG236571**

### CCDC198 (NM\_001283058) Human Tagged ORF Clone

#### Product data:

**Product Type:** Expression Plasmids  
**Product Name:** CCDC198 (NM\_001283058) Human Tagged ORF Clone  
**Tag:** TurboGFP  
**Symbol:** CCDC198  
**Synonyms:** C14orf105  
**Mammalian Cell Selection:** Neomycin  
**Vector:** pCMV6-AC-GFP (PS100010)  
**E. coli Selection:** Ampicillin (100 ug/mL)  
**ORF Nucleotide Sequence:** >RG236571 representing NM\_001283058.  
Blue=ORF Red=Cloning site Green=Tag(s)

```
GCTCGTTT TAGTGAACCGTCAGAATTTTGT AATACGACTCACTATAGGGCCGCCGGGAATTCGTGCACTG
GATCCGGTACCGAGGAGATCTGCCGCC GCGATCGCC
ATGAATTTAAAGGCTTCATAAGGAATTTCTTGGATAAAATGAAGCTTGAACCCATTGACTTGCCACGA
GTAATTACTTCAGGAAGACTCCTGAGCCAGCGAGAAGCCAGGACAATGCACAAAGCAAAGGTACTAGAA
AAGAAAATGCAAACTCCAATGTATACTTCTGAGAACAGACAATTTTGCATAAGATGCAAGTGCTGGAA
ATGATCCGTAAAAGACAAGAGGCCCAAATGGAGTTAAAGAAAAGTCTTCATGGAGAGGCAAGAATTAAT
AAGCAAAGTCCAAGGGACCATAAAGCCAAGAAAACCCCTCAAAGCACCCCAAGGAATGATGACCATGAC
CTTCTAACCATGTTGCCTGATGAAATCTTGAACAGAGGTCCCGGAAATTCAAAGAATACAGAATTTTGG
AAACATCAAGCAGTGAATAACTACTGTCCCTGGAAAATTGGCAAAATGGAACATGGCTTCATGAACAA
GAGGCCAGGGACAGCTTCTCTGGGACAGTTCAGCTCTGACTCAGATGAGCAGGGGAAAGATGAGAAG
AAGCCACGAGCACTGGTGAGGACCAGGACAGAGAGAATCCCACTTTTCGATGAGTTTTTGTCAAGAA
ACGCGTACGCGGCCGCTCGAG - GFP Tag - GTTTAAAC
```

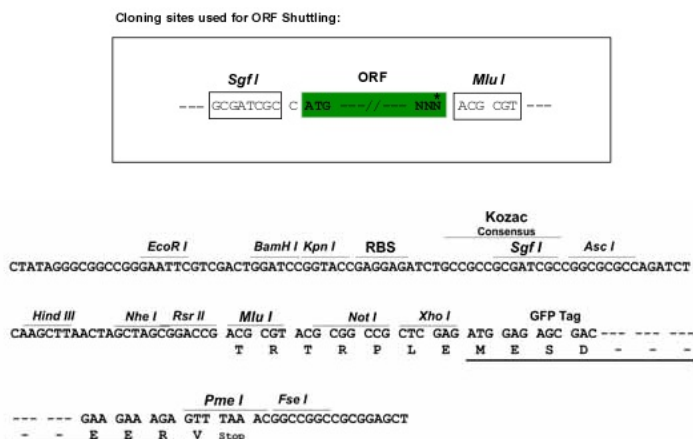
**Protein Sequence:** >Peptide sequence encoded by RG236571  
Blue=ORF Red=Cloning site Green=Tag(s)

```
MNLKGFIRNFLDKMKLEPIDLPRVITSGRLLSQREARTMHKAKVLEKKMQTPMYTSENRYLHKMQVLE
MIRKRQEAQMELKSLHGEARINKQSPRDHKAKKTLQSTPRNDDHLLTMLPDEILNRGPGNSKNTFL
KHQAVNNYCPWKIGKMETWLHEQEAQQQLLWDSSSSDSDEQKDEKKPRALVRTRTERIPLDFEFDQDE
TRTRPLEMESDESGLPAMEIECRITGTLNGVEFELVGGEGTPEQGRMTNKMSTKGALTFSPYLLSHV
MGYGFYHFGTYPYSGYENPFLHAINNGGYNTRIEKYEDGGVLHVSFSYRYEAGRVIGDFKVMGTGFPED
SVIFTDKIIRSNATVEHLHPMGDNDLDGSFTRTFSLRDGGYSSVVDSHMHFKSAIHP SILQNGGPMFA
FRRVEEDHSNTELGIVEYQHAFKTPDADAGEERV
```

**Restriction Sites:** SgfI-MluI



[View online »](#)

**Cloning Scheme:**


**ACCN:** NM\_001283058

**ORF Size:** 621 bp

**OTI Disclaimer:** The molecular sequence of this clone aligns with the gene accession number as a point of reference only. However, individual transcript sequences of the same gene can differ through naturally occurring variations (e.g. polymorphisms), each with its own valid existence. This clone is substantially in agreement with the reference, but a complete review of all prevailing variants is recommended prior to use. [More info](#)

**OTI Annotation:** This clone was engineered to express the complete ORF with an expression tag. Expression varies depending on the nature of the gene.

**Components:** The ORF clone is ion-exchange column purified and shipped in a 2D barcoded Matrix tube containing 10ug of transfection-ready, dried plasmid DNA (reconstitute with 100 ul of water).

**RefSeq:** [NM\\_001283058.2](#)

**RefSeq Size:** 3138 bp

**RefSeq ORF:** 624 bp

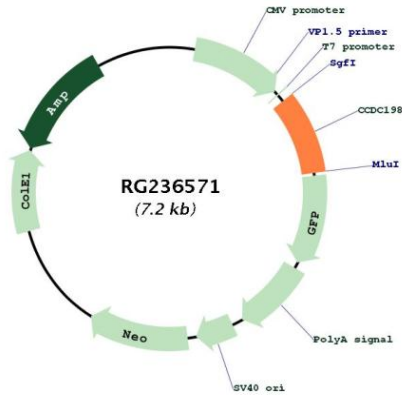
**Locus ID:** 55195

**UniProt ID:** [Q9NVL8](#)

**Cytogenetics:** 14q22.3

**MW:** 24.9 kDa

Product images:



Circular map for RG236571