

Product datasheet for **RG236523**

C22orf25 (TANGO2) (NM_001283199) Human Tagged ORF Clone

Product data:

Product Type: Expression Plasmids
Product Name: C22orf25 (TANGO2) (NM_001283199) Human Tagged ORF Clone
Tag: TurboGFP
Symbol: TANGO2
Synonyms: C22orf25; MECRCN
Mammalian Cell Selection: Neomycin
Vector: pCMV6-AC-GFP (PS100010)
E. coli Selection: Ampicillin (100 ug/mL)
ORF Nucleotide Sequence: >RG236523 representing NM_001283199.
Blue=ORF Red=Cloning site Green=Tag(s)

```
GCTCGTTTAGTGAACCGTCAGAATTTGTAAACGACTCACTATAGGGCGCCGGGAATTCGTCGACTG
GATCCGGTACCGAGGAGATCTGCCGCCGCGATCGCC
ATGTGCATCATCTTCTTTAAGTTTGATCCTCGCCCTGTTTCCAAAAACGCGTACAGGCTCATCTTGGCA
GCCAACAGGGATGAATTCTACAGCCGACCTCCAAGTTAGCTGACTTCTGGGGAAACAACAGAGATC
CTCAGTGGGCTGGACATGGAGGAAGGCAAGGAAGGAGGCACATGGCTGGGCATCAGCACAGTGGCAAG
CTGGCAGCACTACCAACTACCTGCAGCCGAGCTGGACTGGCAGGCCGAGGGCGAGGTGAAGTGTGTC
ACCCACTTCTGACCACTGACGTGGACAGCTTGTCTACCTGAAGAAGGTCTCTATGAGGGCCATCTG
TACAATGGCTTCAACCTCATAGCAGCCGACCTGAGGCAGCTGCCAGACCCGCCATCGAGGACCAGGGT
GGGGAGTACGTGCAGCCATGCTGAGCAAGTACGCGGCTGTGTGCGTGGCTGCCCTGGTACGGCACC
AGAACCAACTATCATCTGGTAGATGCGGACGCCACGTGACCTTCACTGAGCGTAGCATGATGGAC
AAGGACCTCTCCCACTGGGAGACCAGAACCTATGAGTTACACTGCAGAGC
AGCGGACCGACGCGTACGCGGCCGCTCGAG - GFP Tag - GTTAAAC
```

Protein Sequence: >Peptide sequence encoded by RG236523
Blue=ORF Red=Cloning site Green=Tag(s)

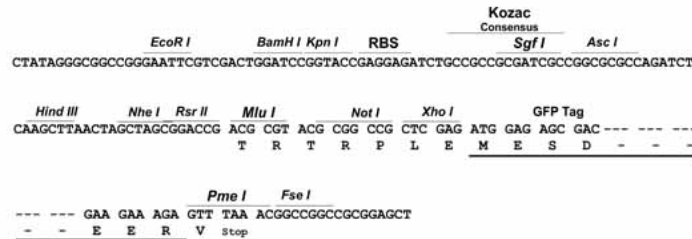
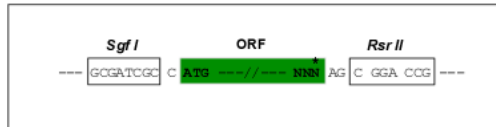
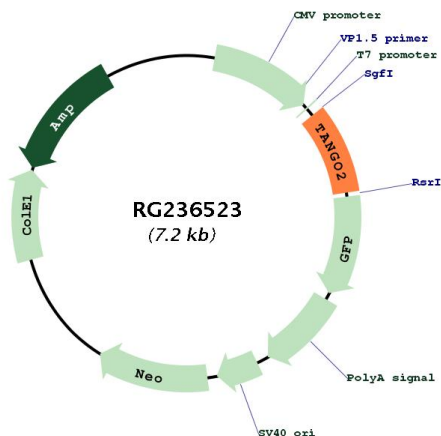
```
MCIIFKFDPRPVSKNAYRLILAAANRDEFYSRPSKLADFWGNNEILSGLDMEEGKEGGTWLGISTRGK
LAALTNYLQPQLDWQARGRGLVTHFLTTDVSLSYLKKVSMEGHLYNGFNLIAADLRQLPDAIEDQG
GEYVQPMLSKYAAVCRCPGYGTRTNTIILVDADGHVTFTERSMDKDLSHWETRYEFTLQS
SGPTRTRPLEMESDESGLPAMEIECRITGTLNGVEFELVGGEGTPEQGRMTNKMSTKGALTFSPYLL
SHVMGYGFYHFGTYPSTYENPFLHAINNGGYTNTRIEKYEDGGVLVHVSFSYRYEAGRVIGDFKVMGTGF
PEDSVIFTDKIIRSNATVEHLHPMGDNDLDGSFTRTFSLRDGGYSSVVDSHMHFKSAIHP SILQNGGP
MFAFRRVEEDHSNTELGIVEYQHAFKTPDADAGEERV
```

Restriction Sites: Sgfl-RsrII



Cloning Scheme:

Cloning sites used for ORF Shuttling:


Plasmid Map:

ACCN: NM_001283199

ORF Size: 603 bp

OTI Disclaimer: The molecular sequence of this clone aligns with the gene accession number as a point of reference only. However, individual transcript sequences of the same gene can differ through naturally occurring variations (e.g. polymorphisms), each with its own valid existence. This clone is substantially in agreement with the reference, but a complete review of all prevailing variants is recommended prior to use. [More info](#)
OTI Annotation: This clone was engineered to express the complete ORF with an expression tag. Expression varies depending on the nature of the gene.

Components: The ORF clone is ion-exchange column purified and shipped in a 2D barcoded Matrix tube containing 10ug of transfection-ready, dried plasmid DNA (reconstitute with 100 ul of water).

RefSeq: [NM_001283199.2](#), [NP_001270128.1](#)

RefSeq Size: 2104 bp

RefSeq ORF: 606 bp

Locus ID: 128989

UniProt ID: [Q6ICL3](#)

Cytogenetics: 22q11.21

MW: 23.2 kDa

Gene Summary: This gene belongs to the transport and Golgi organization family, whose members are predicted to play roles in secretory protein loading in the endoplasmic reticulum. Depletion of this gene in *Drosophila* S2 cells causes fusion of the Golgi with the ER. In mouse tissue culture cells, this protein co-localizes with a mitochondrially targeted mCherry protein and displays very low levels of co-localization with Golgi and peroxisomes. Allelic variants of this gene are associated with rhabdomyolysis, metabolic crises with encephalopathy, and cardiac arrhythmia. [provided by RefSeq, Apr 2016]