

Product datasheet for **RG236403**

KCNIP1 (NM_001278340) Human Tagged ORF Clone

Product data:

Product Type: Expression Plasmids
Product Name: KCNIP1 (NM_001278340) Human Tagged ORF Clone
Tag: TurboGFP
Symbol: KCNIP1
Synonyms: KCHIP1; VABP
Mammalian Cell Selection: Neomycin
Vector: pCMV6-AC-GFP (PS100010)
E. coli Selection: Ampicillin (100 ug/mL)
ORF Nucleotide Sequence: >RG236403 representing NM_001278340.
Blue=ORF Red=Cloning site Green=Tag(s)

```
GCTCGTTTAGTGAACCGTCAGAATTTTGTAAACGACTCACTATAGGGCCGCCGGGAATTCGTCGACTG
GATCCGGTACCGAGGAGATCTGCCGCCGCGATCGCC
ATGACCATGGTTTGCCATCGGCCGAGGGACTGGAGCAGCTCGAGGCCAGACCAACTTCACCAAGAGG
GAGCTGCAGGTCCTTTATCGAGGCTTCAAAAATGAGTGCCCCAGTGGTGTGGTCAACGAAGACACATTC
AAGCAGATCTATGCTCAGTTTTTCCCTCATGGAGATGCCAGCACGTATGCCATTACCTCTTCAATGCC
TTCGACACCCTCAGACAGGCTCCGTGAAGTTCGAGGACTTTGTAACCGCTCTGTCGATTTTATTGAGA
GGAAGTGTCCACGAGAACTAAGGTGGACATTTAATTTGTATGACATCAACAAGGACGGATACATAAAC
AAAGAGGAGATGATGGACATTGTCAAAGCCATCTATGACATGATGGGAAATACACATATCCTGTGCTC
AAAGAGGACACTCAAGGCAGCATGTGGACGTCTTCTCCAGAAAATGGACAAAAATAAAGATGGCATC
GTAACCTTAGATGAATTTCTGAATCATGTCAGGAGGACGACAACATCATGAGGTCTCTCCAGCTGTTT
CAAATGTCATG
ACGCGTACGCGGCCGCTCGAG - GFP Tag - GTTTAAAC
```

Protein Sequence: >Peptide sequence encoded by RG236403
Blue=ORF Red=Cloning site Green=Tag(s)

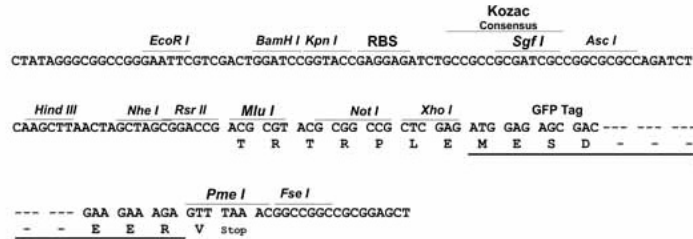
```
MTMVCHRPEGLEQLEAQTNFTKRELQVL YRGFKNECPSGVVNEDTFKQIYAQFFPHGDASTYAHYLFNA
FDTTQTGSVKFEDFVTALSILLRGTVHEKLRWTFNLVDINKDGYINKEEMMDIVKAIYDMMGKYTYPLV
KEDTPRQHVDVFFQKMDKNKDGIVTLDEFLESCQEDDNIMRSLQLFQNMV
TRTRPLEMESDESGLPAMEIECRITGTLNGVEFELVGGEGTPEQGRMTNKMSTKGALTFSPYLLSHV
MGYGFYHFGTYPSGYENPFLHAINNGGYNTRIEKYEDGGVLHVSFSYRYEAGRVIGDFKVMGTGFPED
SVIFTDKIIRSNATVEHLHPMGDNDLDGSFTRTFSLRDGGYSSVVDSHMHFKSAIHP SILQNGGPMFA
FRRVEEDHSNTELGIVEYQHAFKTPDADAGEERV
```

Restriction Sites: SgfI-MluI



Cloning Scheme:

Cloning sites used for ORF Shutting:



ACCN: NM_001278340

ORF Size: 564 bp

OTI Disclaimer: The molecular sequence of this clone aligns with the gene accession number as a point of reference only. However, individual transcript sequences of the same gene can differ through naturally occurring variations (e.g. polymorphisms), each with its own valid existence. This clone is substantially in agreement with the reference, but a complete review of all prevailing variants is recommended prior to use. [More info](#)

OTI Annotation: This clone was engineered to express the complete ORF with an expression tag. Expression varies depending on the nature of the gene.

Components: The ORF clone is ion-exchange column purified and shipped in a 2D barcoded Matrix tube containing 10ug of transfection-ready, dried plasmid DNA (reconstitute with 100 ul of water).

RefSeq: [NM_001278340.2](#)

RefSeq Size: 2190 bp

RefSeq ORF: 567 bp

Locus ID: 30820

UniProt ID: [Q9NZI2](#)

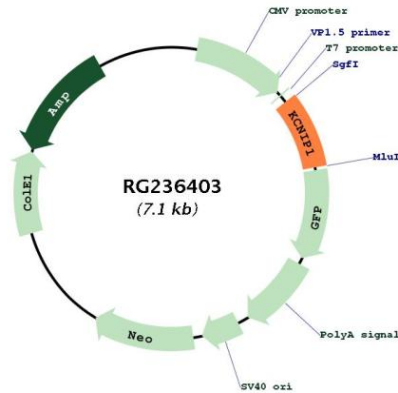
Cytogenetics: 5q35.1

Protein Families: Druggable Genome, Ion Channels: Other

MW: 22.5 kDa

Gene Summary:

This gene encodes a member of the family of cytosolic voltage-gated potassium (Kv) channel-interacting proteins (KCNIPs), which belong to the neuronal calcium sensor (NCS) family of the calcium binding EF-hand proteins. They associate with Kv4 alpha subunits to form native Kv4 channel complexes. The encoded protein may regulate rapidly inactivating (A-type) currents, and hence neuronal membrane excitability, in response to changes in the concentration of intracellular calcium. Alternative splicing results in multiple transcript variants encoding different isoforms. [provided by RefSeq, May 2013]

Product images:


Circular map for RG236403