

## Product datasheet for **RG236399**

### ST3GAL6 (NM\_001271148) Human Tagged ORF Clone

#### Product data:

**Product Type:** Expression Plasmids  
**Product Name:** ST3GAL6 (NM\_001271148) Human Tagged ORF Clone  
**Tag:** TurboGFP  
**Symbol:** ST3GAL6  
**Synonyms:** SIAT10; ST3GALVI  
**Mammalian Cell Selection:** Neomycin  
**Vector:** pCMV6-AC-GFP (PS100010)  
**E. coli Selection:** Ampicillin (100 ug/mL)  
**ORF Nucleotide Sequence:** >RG236399 representing NM\_001271148.  
Blue=ORF Red=Cloning site Green=Tag(s)

```
GCTCGTTTAGTGAACCGTCAGAATTTTGTAAACGACTCACTATAGGGCGGCCGGGAATTCGTCGACTG
GATCCGGTACCGAGGAGATCTGCCGCCGCGATCGCC
ATGAATAATGGTCTGTTTTAGGACATGAAGAAGAAGTTGGGAGAAGGACAACCTTCGACTTTTTTAT
CCAGAATCTGTTTTTTCAGATCTATTACAATGACCCTAATACGACAGTGATTCTCACTGCTTTTAAG
CCACATGATTTAAGGTGGCTGTTGGAATTGTTGATGGGTGACAAAATAAACACTAATGGTTTTTGGGAG
AAACCAGCCTTAAACCTGATTTATAAACCTTATCAAATCCGAATATTAGATCCTTTCATTATCAGAAACA
GCAGCTTATGAAGTCTTCATTTTCCAAAAGTGTTCAAAAAATCAGAAACCTAAACACCCAACAACA
GGAATTATTGCCATCACATTGGCGTTTTACATATGTCACGAAGTTCACCTAGCTGGTTTTAAATACAAC
TTTTCTGACCTCAAGAGTCTTTGCACTACTATGGGAATGCCACCATGTCTTTGATGAATAAGAACGCG
TATCACAATGTGACTGCAGAGCAGCTCTTTTTGAAGGACATTATAGAAAAAACCTCGTAATCAACTTG
ACTCAAGAT
AGCGGACCGACGCGTACGCGGCCGCTCGAG - GFP Tag - GTTTAAAC
```

**Protein Sequence:** >Peptide sequence encoded by RG236399  
Blue=ORF Red=Cloning site Green=Tag(s)

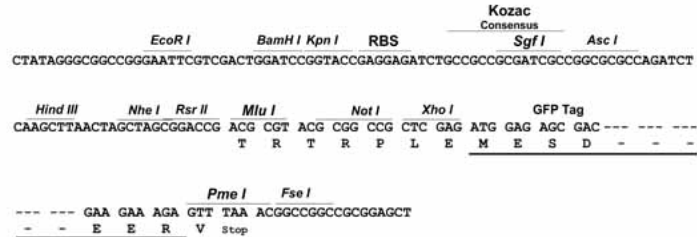
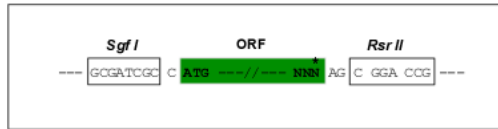
```
MNNGPVLGHEEEVGRRTTFRLFYPESVFS DPIHNDPNTT VILTAFKPHDLRWLLELLMGDKINTNGFWK
KPALNLIYKPYQIRILDPFIIRTAAYELLHFPKVF PKNQPKHPTTGIIAITLAFYICHEVHLAGFKYN
FSDLKSP LHHYGNATMSLMNKNA YHNVTAEQLFLKDIIEKNLVINLTQD
SGPTRTRPLEMESDESGLPAMEIECRITGTLNGVEFELVGGEGTPEQGRMTNKMKSTKGALTFSPYLL
SHVMGYGFYHFGTYP SGYENPFLHAINNGGYTNTRIEKYEDGGVLHVSFSYRYEAGRVIGDFKVMGTGF
PEDSVIFTDKIIRS NATVEHLHPMGDNDLDGSFTRTFSLRDGGYSSVVD SHMHFKSAIHPSILQNGGP
MFAFRRVEEDHSNTELGIVEYQHAFKTPDADAGEERV
```

**Restriction Sites:** SgfI-RsrII



**Cloning Scheme:**

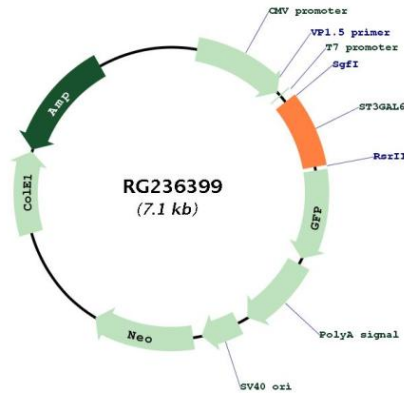
Cloning sites used for ORF Shuttling:



- ACCN:** NM\_001271148
- ORF Size:** 561 bp
- OTI Disclaimer:** The molecular sequence of this clone aligns with the gene accession number as a point of reference only. However, individual transcript sequences of the same gene can differ through naturally occurring variations (e.g. polymorphisms), each with its own valid existence. This clone is substantially in agreement with the reference, but a complete review of all prevailing variants is recommended prior to use. [More info](#)
- OTI Annotation:** This clone was engineered to express the complete ORF with an expression tag. Expression varies depending on the nature of the gene.
- Components:** The ORF clone is ion-exchange column purified and shipped in a 2D barcoded Matrix tube containing 10ug of transfection-ready, dried plasmid DNA (reconstitute with 100 ul of water).
- RefSeq:** [NM\\_001271148.1](#), [NP\\_001258077.1](#)
- RefSeq Size:** 3146 bp
- RefSeq ORF:** 564 bp
- Locus ID:** 10402
- Cytogenetics:** 3q12.1
- Protein Families:** Transmembrane
- Protein Pathways:** Glycosphingolipid biosynthesis - lacto and neolacto series, Metabolic pathways
- MW:** 22.1 kDa

**Gene Summary:**

The protein encoded by this gene is a member of the sialyltransferase family. Members of this family are enzymes that transfer sialic acid from the activated cytidine 5'-monophospho-N-acetylneuraminic acid to terminal positions on sialylated glycolipids (gangliosides) or to the N- or O-linked sugar chains of glycoproteins. This protein has high specificity for neolactotetraosylceramide and neolactohexaosylceramide as glycolipid substrates and may contribute to the formation of selectin ligands and sialyl Lewis X, a carbohydrate important for cell-to-cell recognition and a blood group antigen. [provided by RefSeq, Apr 2016]

**Product images:**


Circular map for RG236399