

## Product datasheet for **RG236385**

### CNOT8 (NM\_001301075) Human Tagged ORF Clone

#### Product data:

**Product Type:** Expression Plasmids  
**Product Name:** CNOT8 (NM\_001301075) Human Tagged ORF Clone  
**Tag:** TurboGFP  
**Symbol:** CNOT8  
**Synonyms:** CAF1; Caf1b; CALIF; hCAF1; POP2  
**Mammalian Cell Selection:** Neomycin  
**Vector:** pCMV6-AC-GFP (PS100010)  
**E. coli Selection:** Ampicillin (100 ug/mL)  
**ORF Nucleotide Sequence:** >RG236385 representing NM\_001301075.  
Blue=ORF Red=Cloning site Green=Tag(s)

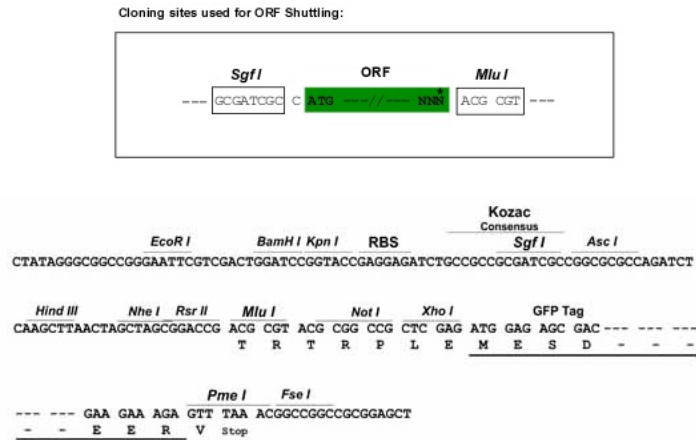
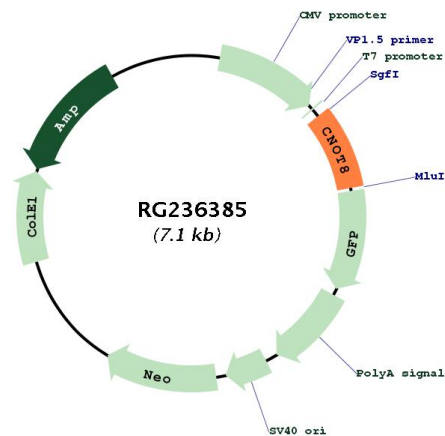
```
GCTCGTTTAGTGAACCGTCAGAATTTTGTAAACGACTCACTATAGGGCGGCCGGGAATTCGTCGACTG
GATCCGGTACCGAGGAGATCTGCCGCCGCGATCGCC
ATGTACTCCCAGGATTCCATAGATCTCCTTGCTAACTCAGGACTACAGTTTCAGAAGCATGAAGAGGAA
GGGATTGACACTGCACCTTTGCAGAGCTGCTTATGACATCAGGAGTGGTCTCTGTGACAATGTCAAA
TGGCTTTCATTTCATAGTGGCTATGATTTTGGCTATATGGTAAAGTTGCTTACAGATTCTCGTTTGCCA
GAAGAGGAACATGAATTCTTTCATATTCTGAACCTTTTCTCCCATCCATTTATGATGTGAAATACCTG
ATGAAGAGCTGCAAAAATCTTAAGGGAGGTCTTCAGGAAGTTGCTGATCAGTTGGATTTGCAGAGGATT
GGAAGGCAGCACCAGGCAGGCTCAGACTCACTGCTGACAGGAATGGCTTTCTTTAGGATGAAAGAGTTG
TTTTTTGAGGACAGCATTGATGATGCCAAGTACTGTGGCGGCTCTATGGCTTAGGCACAGGAGTGGCC
CAGAAGCAGAATGAGGATGTGGACTCTGCCCAGGAGAAGATGAGCATCCTGGCGATTATCAACAACATG
CAGCAG
ACGCGTACGCGGCCGCTCGAG - GFP Tag - GTTTAAAC
```

**Protein Sequence:** >Peptide sequence encoded by RG236385  
Blue=ORF Red=Cloning site Green=Tag(s)

```
MYSQSDIDLLANGLQFQKHEEEGIDTLHFAELLMTSGVVLCDNVKWSFHSGYDFGYMVKLLTDSRLP
EEEHEFFHILNLFPSIYDVKYLKMSCKNLKGGLEQVADQLDLQRIQRHQAGSDSLLTGMAFFRMKEL
FFEDSIDDAKYCGRLYLGTGVAQKQNEVDVSAQEKMILAIINMQQ
TRTRPLEMESDESGLPAMEIECRITGTLNGVEFELVGGEGTPEQGRMTNKMSTKGALTFSPYLLSHV
MGYGFYHFGTYPSGYENPFLHAINNGGYNTRIEKYEDGGVLHVSFSYRYEAGRVIGDFKVMGTGFPED
SVIFTDKIIRSNATVEHLHPMGDNDLDGSFTRTFSLRDGGYSSVVDSHMHFKSAIHPSILQNGGPMFA
FRRVEEDHSNTELGIVEYQHAFKTPDADAGEERY
```

**Restriction Sites:** SgfI-MluI



**Cloning Scheme:**

**Plasmid Map:**


**ACCN:** NM\_001301075

**ORF Size:** 558 bp

**OTI Disclaimer:** The molecular sequence of this clone aligns with the gene accession number as a point of reference only. However, individual transcript sequences of the same gene can differ through naturally occurring variations (e.g. polymorphisms), each with its own valid existence. This clone is substantially in agreement with the reference, but a complete review of all prevailing variants is recommended prior to use. [More info](#)

**OTI Annotation:** This clone was engineered to express the complete ORF with an expression tag. Expression varies depending on the nature of the gene.

**Components:** The ORF clone is ion-exchange column purified and shipped in a 2D barcoded Matrix tube containing 10ug of transfection-ready, dried plasmid DNA (reconstitute with 100 ul of water).

|                   |   |
|-------------------|---|
| RefSeq:           | <u>NM_001301075.2</u>   |
| RefSeq Size:      | 2475 bp   |
| RefSeq ORF:       | 561 bp  |
| Locus ID:         | 9337  |
| UniProt ID:       | <u>Q9UFF9</u>   |
| Cytogenetics:     | 5q33.2  |
| Protein Families: | Transcription Factors   |
| Protein Pathways: | RNA degradation   |
| MW:               | 21.7 kDa  |
| Gene Summary:     | <p>Has 3'-5' poly(A) exoribonuclease activity for synthetic poly(A) RNA substrate. Its function seems to be partially redundant with that of CNOT7. Catalytic component of the CCR4-NOT complex which is linked to various cellular processes including bulk mRNA degradation, miRNA-mediated repression, translational repression during translational initiation and general transcription regulation. During miRNA-mediated repression the complex seems also to act as translational repressor during translational initiation. Additional complex functions may be a consequence of its influence on mRNA expression. Associates with members of the BTG family such as TOB1 and BTG2 and is required for their anti-proliferative activity. [UniProtKB/Swiss-Prot Function]</p> |