

Product datasheet for **RG236332**

Signal sequence receptor delta (SSR4) (NM_001204527) Human Tagged ORF Clone

Product data:

Product Type: Expression Plasmids
Product Name: Signal sequence receptor delta (SSR4) (NM_001204527) Human Tagged ORF Clone
Tag: TurboGFP
Symbol: Signal sequence receptor delta
Synonyms: CDG1Y; TRAPD
Mammalian Cell Selection: Neomycin
Vector: pCMV6-AC-GFP (PS100010)
E. coli Selection: Ampicillin (100 ug/mL)
ORF Nucleotide Sequence: >RG236332 representing NM_001204527.
Blue=ORF Red=Cloning site Green=Tag(s)

```
GCTCGTTTAGTGAACCGTCAGAATTTGTAAACGACTCACTATAGGGCGCCGGGAATTCGTCGACTG
GATCCGGTACCGAGGAGATCTGCCGCCGCGATCGCC
ATGACGAAAGCAGAGAAGAGGCGATGGCGCGATGGCATCTCTCGGCGCCCTGGCGCTGCTCCTGCTG
TCCAGCCTCTCCCGCTGCTCAGCCGAGGCTGCCTGGAGCCCCAGATCACCCCTTCTACTACACCACT
TCTGACGCTGTCAATTCCTGAGACCGTCTTATTGTGGAGATCTCCCTGACATGCAAGAACAGGGTC
CAGAACATGGCTCTATGCTGACGTCGGTGAAAACAATCCCTGTCACTCGAGGCCAGGATGTGGGG
CGTTATCAGGTGTCTGGAGCCTGGACCACAAGAGCGCCACGCAGGCACCTATGAGGTTAGATTCTC
GACGAGGAGTCTACAGCCTCCTCAGGAAGGCTCAGAGGAATAACGAGGACATTTCCATCATCCCGCCT
CTGTTTACAGTCAGCGTGGACCATCGGGCACTTGAACGGGCCCTGGGTGTCCACTGAGGTGCTGGCT
GCGGCGATCGGCCTTGATCTACTACTTGGCCTTCAGTGCGAAGAGCCACATCCAGGCC
ACGCGTACGCGGCCGCTCGAG - GFP Tag - GTTTAAAC
```

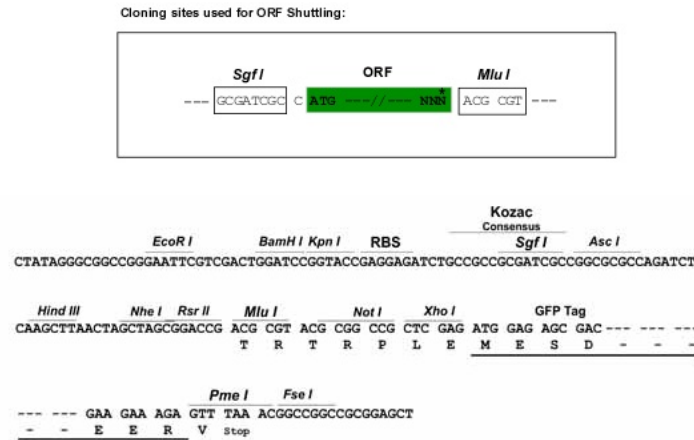
Protein Sequence: >Peptide sequence encoded by RG236332
Blue=ORF Red=Cloning site Green=Tag(s)

```
MTESREEAMAAMASLGALALLLSSLSRCSAEACLEPQITPSYYTSDAVISTETVFIVEISLTCKNRV
QNMALYADVGGKQFPVTRGQDVGRYQVSWSLDHKSAHAGTYEVRFFDEESYLLRKAQRNNEISIIIP
LFTVSDVHRGTWNGPWVSTEVLAAAIGLVIYYLAFSAKSHIQA
TRTRPLEMESDESGLPAMEIECRITGTLNGVEFELVGGEGTPEQGRMTNKMSTKGALTFSPYLLSHV
MGYGFYHFGTYPSGYENPFLHAINNGGYNTRIEKYEDGGVLHVSFSYRYEAGRVIGDFKVMGTGFPED
SVIFTDKIIRSNATVEHLHPMGDNDLDGSFTRTFSLRDGGYSSVVDSHMHFKSAIHPSILQNGGPMFA
FRRVEEDHSNTELGIVEYQHAFKTPDADAGEERV
```

Restriction Sites: SgfI-MluI



[View online >](#)

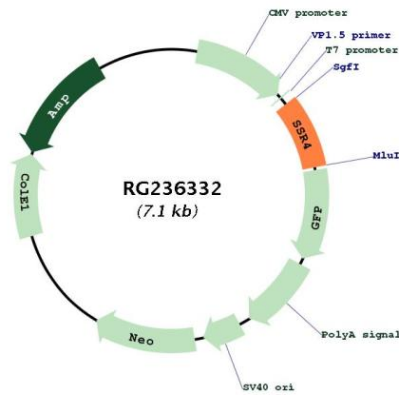
Cloning Scheme:


- ACCN:** NM_001204527
- ORF Size:** 543 bp
- OTI Disclaimer:** The molecular sequence of this clone aligns with the gene accession number as a point of reference only. However, individual transcript sequences of the same gene can differ through naturally occurring variations (e.g. polymorphisms), each with its own valid existence. This clone is substantially in agreement with the reference, but a complete review of all prevailing variants is recommended prior to use. [More info](#)
- OTI Annotation:** This clone was engineered to express the complete ORF with an expression tag. Expression varies depending on the nature of the gene.
- Components:** The ORF clone is ion-exchange column purified and shipped in a 2D barcoded Matrix tube containing 10ug of transfection-ready, dried plasmid DNA (reconstitute with 100 ul of water).
- RefSeq:** [NM_001204527.2](#)
- RefSeq Size:** 777 bp
- RefSeq ORF:** 546 bp
- Locus ID:** 6748
- Cytogenetics:** Xq28
- Protein Families:** Druggable Genome
- MW:** 20.4 kDa

Gene Summary:

This gene encodes the delta subunit of the translocon-associated protein complex which is involved in translocating proteins across the endoplasmic reticulum membrane. The encoded protein is located in the Xq28 region and is arranged in a compact head-to-head manner with the isocitrate dehydrogenase 3 (NAD+) gamma gene and both genes are driven by a CpG-embedded bidirectional promoter. Alternate splicing results in multiple transcript variants. [provided by RefSeq, Mar 2011]

Product images:



Circular map for RG236332