

## Product datasheet for **RG236317**

### RSPO2 (NM\_001282863) Human Tagged ORF Clone

#### Product data:

**Product Type:** Expression Plasmids  
**Product Name:** RSPO2 (NM\_001282863) Human Tagged ORF Clone  
**Tag:** TurboGFP  
**Symbol:** RSPO2  
**Synonyms:** CRISTIN2; HHRRD; TETAMS2  
**Mammalian Cell Selection:** Neomycin  
**Vector:** pCMV6-AC-GFP (PS100010)  
**E. coli Selection:** Ampicillin (100 ug/mL)  
**ORF Nucleotide Sequence:** >RG236317 representing NM\_001282863.  
Blue=ORF Red=Cloning site Green=Tag(s)

```
GCTCGTTTAGTGAACCGTCAGAATTTTGTAAACGACTCACTATAGGGCGCCGGGAATTCGTCGACTG
GATCCGGTACCGAGGAGATCTGCCGCCGCGATCGCC
ATGCGATTTTCGCCTTTTCTCCTTTGCCCTCATCATTCTGAACTGCATGGATTACAGCCACTGCCAAGGC
AACCGATGGAGACGCAGTAAGCGAGGATGCAGAAATAGAAAAGTGTATTCTTGCTTTAGCAAAGACTTT
TGTACCAAGTCAAAGTAGGCTTTTATTTGCATAGAGGCCGTTGCTTTGATGAATGTCCAGATGGTTTT
GCACCATAGAAGAAACCATGGAATGTGTGGGATGTGAAGTTGGTCATTGGAGCGAATGGGAACCTGT
AGCAGAAATAATCGACATGTGGATTTAAATGGGGTCTGGAACCCAGAACACGGCAAATTGTTAAAAAG
CCAGTGAAGACACAATACTGTGTCCAACCATTGCTGAATCCAGGAGATGCAAGATGACAATGAGGCAT
TGTCAGGAGGGAAGAGAACACCAAAGGCGAAGGAGAAGAGGAACAAGAAAAAGAAAAGGAAGCTGATA
GAAAGGGCCCAGGAGCAACACAGCGTCTTCTAGCTACAGACAGAGCTAACCAA
ACGCGTACGCGGCCGCTCGAG - GFP Tag - GTTTAAAC
```

**Protein Sequence:** >Peptide sequence encoded by RG236317  
Blue=ORF Red=Cloning site Green=Tag(s)

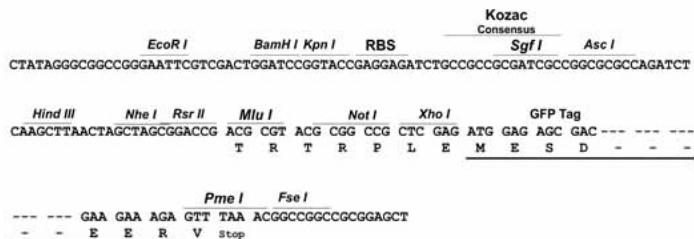
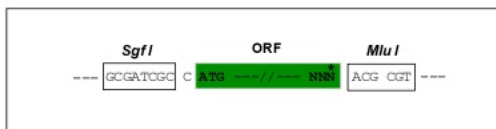
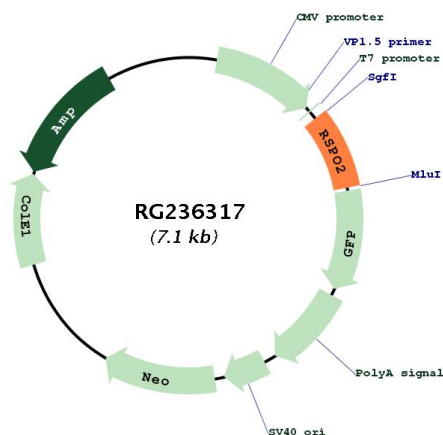
```
MQFRLFFSFALIIILNMDYSHCQGNRWRRSKRGCRIENCDSCFSKDFCTKCKVGFYLHRGRCFDECPDF
APLEETMECVGCEVHWSEWGTCSRNNRTCGFKWGLETRRQIVKKPVKDILCPTIAESRRCKMTMRH
CPGGKRTPKAKEKRKKKRKLIERAQEQHSVFLATDRANQ
TRTRPLEMESDESGLPAMEIECRITGTLNGVEFELVGGGEGTPEQGRMTNKMSTKGALTFSPYLLSHV
MGYGFYHFGTYPSGYENPFLHAINNGGYTNTRIEKYEDGGVLHVSFSSYRYEAGRVIGDFKVMGTGFPED
SVIFTDKIIRSNATVEHLHPMGDNDLDGSFRTRTFSLRDGGYSSVVDSHMFKSAIHPSILQNGGPMFA
FRVEEDHSNTELGIVEYQHAFKTPDADAGEERV
```

**Restriction Sites:** SgfI-MluI



**Cloning Scheme:**

Cloning sites used for ORF Shutting:


**Plasmid Map:**

**ACCN:** NM\_001282863

**ORF Size:** 537 bp

**OTI Disclaimer:** The molecular sequence of this clone aligns with the gene accession number as a point of reference only. However, individual transcript sequences of the same gene can differ through naturally occurring variations (e.g. polymorphisms), each with its own valid existence. This clone is substantially in agreement with the reference, but a complete review of all prevailing variants is recommended prior to use. [More info](#)

**OTI Annotation:** This clone was engineered to express the complete ORF with an expression tag. Expression varies depending on the nature of the gene.

<b>Components:</b>	The ORF clone is ion-exchange column purified and shipped in a 2D barcoded Matrix tube containing 10ug of transfection-ready, dried plasmid DNA (reconstitute with 100 ul of water).
<b>RefSeq:</b>	<a href="#">NM_001282863.1</a> , <a href="#">NP_001269792.1</a>
<b>RefSeq Size:</b>	2777 bp
<b>RefSeq ORF:</b>	540 bp
<b>Locus ID:</b>	340419
<b>UniProt ID:</b>	<a href="#">Q6UXX9</a>
<b>Cytogenetics:</b>	8q23.1
<b>Protein Families:</b>	Secreted Protein
<b>MW:</b>	21.4 kDa
<b>Gene Summary:</b>	This gene encodes a member of the R-spondin family of proteins. These proteins are secreted ligands of leucine-rich repeat containing G protein-coupled receptors that enhance Wnt signaling through the inhibition of ubiquitin E3 ligases. A chromosomal translocation including this locus that results in the formation of a gene fusion has been identified in multiple human cancers. Alternative splicing results in multiple transcript variants. [provided by RefSeq, Dec 2015]