

Product datasheet for **RG236306**

ZCCHC10 (NM_001300818) Human Tagged ORF Clone

Product data:

Product Type: Expression Plasmids
Product Name: ZCCHC10 (NM_001300818) Human Tagged ORF Clone
Tag: TurboGFP
Symbol: ZCCHC10
Mammalian Cell Selection: Neomycin
Vector: pCMV6-AC-GFP (PS100010)
E. coli Selection: Ampicillin (100 ug/mL)
ORF Nucleotide Sequence: >RG236306 representing NM_001300818.
Blue=ORF Red=Cloning site Green=Tag(s)

```
GCTCGTTTAGTGAACCGTCAGAATTTTGTAAACGACTCACTATAGGGCGGCCGGGAATTCGTCGACTG
GATCCGGTACCGAGGAGATCTGCCGCCGCGATCGCC
ATGGCGACTCCCATGCATCGGCTAATAGCCCGGAGACAAGCATTGACACAGAGTTGACGCTGTCAAG
ACCTTTTGGATCCTGATTCAGCCATCCATCGTTATTAGTGAAGCAATAAGCAACATGTAAGATGTCAG
AAATGCTTGGAAATTTGGACATTGGACTTATGAATGCACAGGAAAAAGAAAATACCTACATAGGCCCTCA
AGGACAGCAGAATAAAGAAAGCTTTAAAGAAAAAGAAAACAGATTATTATTGCAACAAAGGTCTAAG
AGTGTAAACAGTCCAGTAGCAGTAGCAGTGACAGTTCGCCAGTGATTCTTCATCAGAGAGTGAAGAA
ACATCTACCTCTTCCTCCTCAGAGGACAGTGACACTGATGAAAGCTCCTCTAGTTCCTCATCCTCAGCC
TCCTCCACAACCTCTTCCTCCTCCTCTGATTGACTCAGACTCAGATTCCAGCTCTCCAGTAGCAGTAGCACC
AGCACAGATAGCAGCTCTGACGATGAACCACCAAGAAGAAGAAAAAGAAA
ACGCGTACGCGGCCGCTCGAG - GFP Tag - GTTTAAAC
```

Protein Sequence: >Peptide sequence encoded by RG236306
Blue=ORF Red=Cloning site Green=Tag(s)

```
MATPMHRLIARRQAFDTELQPVKTFWILIQPSIVISEANKQHVRQCQKCLEFGHWYECTGKRKYLHRPS
RTAELKKALKEKENRLLLQQRSKSVTSSSSSSSDSSASDSSSESEETSTSSSESDTDESSSSSSSA
SSTSSSSSDSDSSSSSSSTSDSSDDEPPKKKKK
TRTRPLEMESDESGLPAMEIECRITGTLNGVEFELVGGEGTPEQGRMTNKMSTKGALTFSPYLLSHV
MGYGFYHFGTYPGYNPFLHAINNGGYNTRIEKYEDGGVLHVSFSYRYEAGRVIGDFKVMGTGFPED
SVIFTDKIIRSNAVHLPMDNDLDGSFTRTFLRDGGYSSVVDSHMHFKSAIHPSILQNGGPMFA
FRRVEEDHSNTELGIVEYQHAFKTPDADAGEERV
```

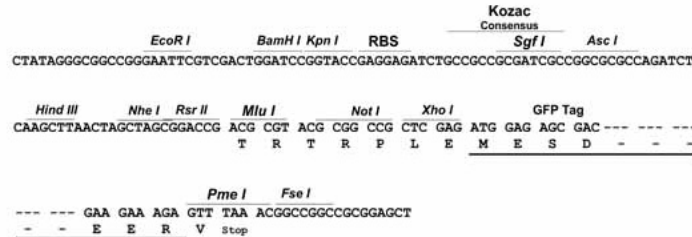
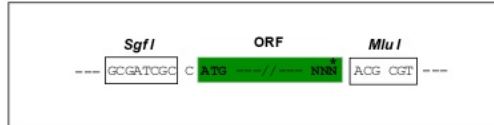
Restriction Sites: SgfI-MluI



[View online »](#)

Cloning Scheme:

Cloning sites used for ORF Shutting:


ACCN: NM_001300818

ORF Size: 534 bp

OTI Disclaimer: The molecular sequence of this clone aligns with the gene accession number as a point of reference only. However, individual transcript sequences of the same gene can differ through naturally occurring variations (e.g. polymorphisms), each with its own valid existence. This clone is substantially in agreement with the reference, but a complete review of all prevailing variants is recommended prior to use. [More info](#)
OTI Annotation: This clone was engineered to express the complete ORF with an expression tag. Expression varies depending on the nature of the gene.

Components: The ORF clone is ion-exchange column purified and shipped in a 2D barcoded Matrix tube containing 10ug of transfection-ready, dried plasmid DNA (reconstitute with 100 ul of water).

RefSeq: [NM_001300818.3](#)
RefSeq Size: 2216 bp

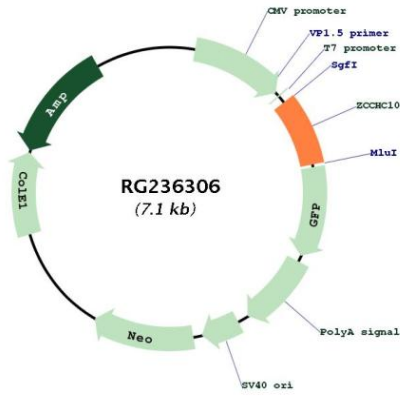
RefSeq ORF: 537 bp

Locus ID: 54819

UniProt ID: [Q8TBK6](#)
Cytogenetics: 5q31.1

MW: 19.8 kDa

Product images:



Circular map for RG236306