

Product datasheet for **RG236276**

CBR1 (NM_001286789) Human Tagged ORF Clone

Product data:

Product Type: Expression Plasmids
Product Name: CBR1 (NM_001286789) Human Tagged ORF Clone
Tag: TurboGFP
Symbol: CBR1
Synonyms: CBR; hCBR1; PG-9-KR; SDR21C1
Mammalian Cell Selection: Neomycin
Vector: pCMV6-AC-GFP (PS100010)
E. coli Selection: Ampicillin (100 ug/mL)
ORF Nucleotide Sequence: >RG236276 representing NM_001286789.
Blue=ORF Red=Cloning site Green=Tag(s)

```
GCTCGTTTAGTGAACCGTCAGAATTTGTAAACGACTCACTATAGGGCGCCGGGAATTCGTCGACTG
GATCCGGTACCGAGGAGATCTGCCGCCGCGATCGCC
ATGTCGTCGGCATCCATGTAGCGCTGGTACTGGAGGCAACAAGGGCATCGGCTTGCCATCGTGCCG
GACCTGTGCCGGCTGTTCTCGGGGACGTGGTCTCACGGCGGGGACGTGACCGGGGCCAGGCGGCC
GTACAGCAGCTGCAGGCGGAGGGCTGAGCCCGCGCTTCCACCAGCTGGACATCGACGATCTGCAGAGC
ATCCGCGCCTGCGCGACTTCTGCGCAAGGAGTACGGGGCCTGGACGTGCTGGTCAACAACGCGGGC
ATCGCCTCAAGGTTGCTGATCCCACACCTTTTCATATCAAGCTGAAGTGACGATGAAAACAAATTC
TTTGGTACCCGAGATGTGTGCACAGAATTACTCCCTCTAATAAAACCCCAAGCATCTGCGTACTGTCT
GCATGGTCATGCCTCTCCAAAATCCTTACAGGAGGAAAGTCCAAGCCCTTAGCATGGTTCACAGAGATG
TCCATAATCTGCCGCTGCTTAACTCTGGGCCATT
ACGCGTACGCGGCCGCTCGAG - GFP Tag - GTTTAAAC
```

Protein Sequence: >Peptide sequence encoded by RG236276
Blue=ORF Red=Cloning site Green=Tag(s)

```
MSSGIHVALVTGGNKIGLAIVRDLRFLSGDVVLTARDVTRGQAAVQQLQAEGLSPRFHQLDIDDLQS
IRALRDFLRKEYGGLDVLVNNAGIAFKVADPTPFHQAIVTMKTNFFGTRDVCTELLPLIKPQASCVLS
AWSCLSQNPSGGKSKPLAWFTEMSIICRCLTLGPF
TRTRPLEMESDESGLPAMEIECRITGTLNGVEFELVGGEGTPEQGRMTNKMSTKGALTFSPYLLSHV
MGYGFYHFGTYPYSGYENPFLHAINNGGYNTRIEKYEDGGVLVHVSFSYRYEAGRVIGDFKVMGTGFPED
SVIFTDKIIRSNATVEHLHPMGDNDLDGSFTRTFSLRDGGYSSVVDSHMHFKSAIHPSILQNGGPMFA
FRRVEEDHSNTELGIVEYQHAFKTPDADAGEERV
```

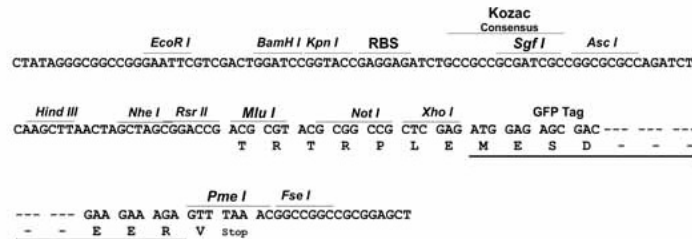
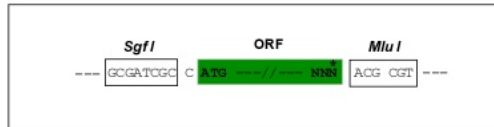
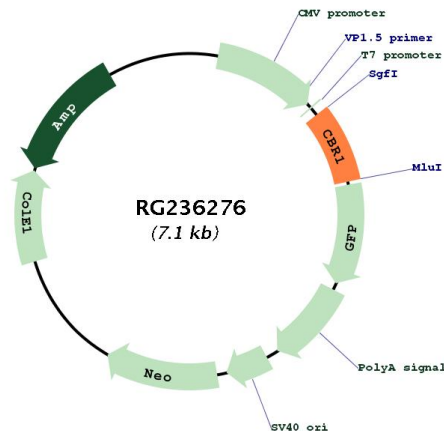
Restriction Sites: Sgfl-MluI



[View online >](#)

Cloning Scheme:

Cloning sites used for ORF Shutting:


Plasmid Map:

ACCN: NM_001286789

ORF Size: 519 bp

OTI Disclaimer: The molecular sequence of this clone aligns with the gene accession number as a point of reference only. However, individual transcript sequences of the same gene can differ through naturally occurring variations (e.g. polymorphisms), each with its own valid existence. This clone is substantially in agreement with the reference, but a complete review of all prevailing variants is recommended prior to use. [More info](#)
OTI Annotation: This clone was engineered to express the complete ORF with an expression tag. Expression varies depending on the nature of the gene.

Components:	The ORF clone is ion-exchange column purified and shipped in a 2D barcoded Matrix tube containing 10ug of transfection-ready, dried plasmid DNA (reconstitute with 100 ul of water).
RefSeq:	NM_001286789.2
RefSeq Size:	1952 bp
RefSeq ORF:	522 bp
Locus ID:	873
UniProt ID:	P16152
Cytogenetics:	21q22.12
Protein Families:	Druggable Genome
Protein Pathways:	Arachidonic acid metabolism, Metabolic pathways
MW:	19.2 kDa
Gene Summary:	The protein encoded by this gene belongs to the short-chain dehydrogenases/reductases (SDR) family, which function as NADPH-dependent oxidoreductases having wide specificity for carbonyl compounds, such as quinones, prostaglandins, and various xenobiotics. Alternatively spliced transcript variants have been found for this gene. [provided by RefSeq, Nov 2013]