

Product datasheet for **RG236273**

Uridine Phosphorylase 1 (UPP1) (NM_001287430) Human Tagged ORF Clone

Product data:

Product Type: Expression Plasmids
Product Name: Uridine Phosphorylase 1 (UPP1) (NM_001287430) Human Tagged ORF Clone
Tag: TurboGFP
Symbol: UPP1
Synonyms: UDRPASE; UP; UPASE; UPP
Mammalian Cell Selection: Neomycin
Vector: pCMV6-AC-GFP (PS100010)
E. coli Selection: Ampicillin (100 ug/mL)
ORF Nucleotide Sequence: >RG236273 representing NM_001287430.
Blue=ORF Red=Cloning site Green=Tag(s)

```
GCTCGTTTAGTGAACCGTCAGAATTTTGTAAACGACTCACTATAGGGCGCCGGGAATTCGTCGACTG
GATCCGGTACCGAGGAGATCTGCCGCCGCGATCGCC
ATGCAGAGAAAGCTGAAAGTCACAAGTCTGGAGCCCGGCACTGTGGTCATAACAGAGCAGGCAGTGGAT
ACCTGCTTCAAGGCAGAGTTTGAGCAGATTGTCCTGGGAAGCGGGTCATCCGAAAACGGACCTTAAC
AAGAAGCTGGTGCAGGAGCTGTTGCTGTGTTCTGCAGAGCTGAGCGAGTTCACCACAGTGGTGGGAAC
ACCATGTGCACCTTGGACTTCTATGAAGGGCAAGCCGCTGGATGGGGCTCTGCTCCTACACGGAG
AAGGACAAGCAGGCGTATCTGGAGGCAGCCTATGCAGCCGGCGTCCGCAATATCGAGATGGAGTCCCTG
GTGTTTGGCGCCATGTGCAGCGCCTGCCGCTCCAAGCGCCGTGGTGTGTGTGCACCTCCTGAACCGC
CTGGAAGGGGACCAGATCAGCAGCCCTCGCAATGTGCTCAGCGAGTACCAGCAGAGGCCGACGGCGTG
GTGAGCTACTTCAAGAAGAACTGAGCAAGGCC
ACGCGTACGCGGCCGCTCGAG - GFP Tag - GTTTAAAC
```

Protein Sequence: >Peptide sequence encoded by RG236273
Blue=ORF Red=Cloning site Green=Tag(s)

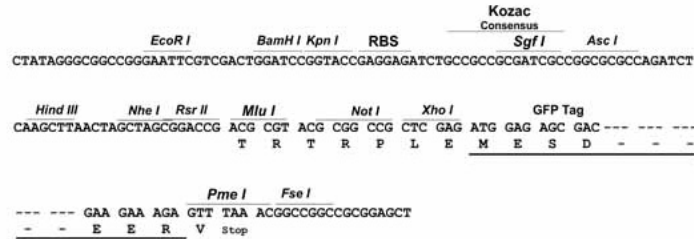
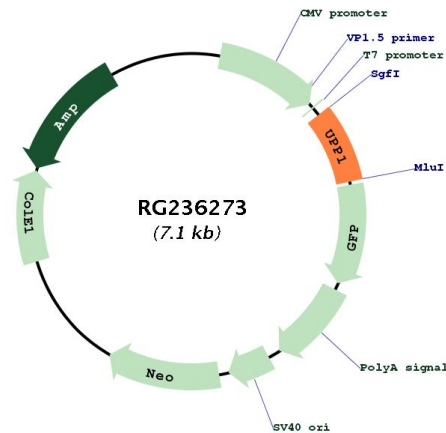
```
MQRKLVTSLEPGTVVITEQAVDTCFKAEFEQIVLGRVIRKTDLNKLVQELLLCSAELSEFTTVVGN
TMCTLDFYEGQGRLDGALCSYTEKDKQAYLEAAYAAGVRNIEMESSVFAAMCSACGLQAAVVCVTLNLR
LEGDQISSPRNVLSEYQQRQRLVSYFIKKLSKA
TRTRPLEMESDESGLPAMEIECRITGTLNGVEFELVGGEGTPEQGRMTNKMSTKGALTFSPYLLSHV
MGYGFYHFGTYPYSGYENPFLHAINNGGYTNTRIEKYEDGGVLHVSFSYRYEAGRVIGDFKVMGTGFPED
SVIFTDKIIRSNATVEHLHPMGDNDLDGSFTRTFSLRDGGYSSVVDSHMHFKSAIHPSILQNGGPMFA
FRRVEEDHSNTELGIVEYQHAFKTPDADAGEERV
```

Restriction Sites: Sgfl-MluI



Cloning Scheme:

Cloning sites used for ORF Shutting:


Plasmid Map:


ACCN: NM_001287430

ORF Size: 519 bp

OTI Disclaimer: The molecular sequence of this clone aligns with the gene accession number as a point of reference only. However, individual transcript sequences of the same gene can differ through naturally occurring variations (e.g. polymorphisms), each with its own valid existence. This clone is substantially in agreement with the reference, but a complete review of all prevailing variants is recommended prior to use. [More info](#)

OTI Annotation: This clone was engineered to express the complete ORF with an expression tag. Expression varies depending on the nature of the gene.

Components:	The ORF clone is ion-exchange column purified and shipped in a 2D barcoded Matrix tube containing 10ug of transfection-ready, dried plasmid DNA (reconstitute with 100 ul of water).
RefSeq:	NM_001287430.1 , NP_001274359.1
RefSeq Size:	1237 bp
RefSeq ORF:	522 bp
Locus ID:	7378
UniProt ID:	Q16831
Cytogenetics:	7p12.3
Protein Pathways:	Drug metabolism - other enzymes, Metabolic pathways, Pyrimidine metabolism
MW:	19.7 kDa
Gene Summary:	This gene encodes a uridine phosphorylase, an enzyme that catalyzes the reversible phosphorylation of uridine (or 2'- deoxyuridine) to uracil and ribose-1-phosphate (or deoxyribose-1-phosphate). The encoded enzyme functions in the degradation and salvage of pyrimidine ribonucleosides. [provided by RefSeq, Oct 2016]