

## Product datasheet for **RG236262**

### PPCDC (NM\_001301102) Human Tagged ORF Clone

#### Product data:

Product Type:	Expression Plasmids
Product Name:	PPCDC (NM_001301102) Human Tagged ORF Clone
Tag:	TurboGFP
Symbol:	PPCDC
Synonyms:	coaC; MDS018; PPC-DC
Mammalian Cell Selection:	Neomycin
Vector:	pCMV6-AC-GFP (PS100010)
E. coli Selection:	Ampicillin (100 ug/mL)
ORF Nucleotide Sequence:	>RG236262 representing NM_001301102. Blue=ORF Red=Cloning site Green=Tag(s)

```
GCTCGTTTGTAGTAACCGTCAGAATTTTGTAAACGACTACTATAGGGCGCCGGGAATTCGTCGACTG
GATCCGGTACCGAGGAGATCTGCCGCCCGCATCGCC
ATGAACCAAAGGCTCCTGTCCAGCTGCTGCACCCTTGATGGAGAGAAAATCCATGTTCTTGTGGGT
GTCACGGGGAGTGTGCGACCCCTGAAGTTGCCCTTCTGGTGTCAAAGCTTTTGGACATTCCTGGGATA
TGGAAAGAGCCGCTCTGACCCAGTTCTGCACATTGACCTGCGGAGGTGGGCAGACCTCCTGCTGGTGGCT
CCTCTTGATGCCAACACTCTGGGAAGGTGGCCAGTGGCATCTGTGACAACCTGCTTACCTGCGTCATG
CGGGCCTGGGACCGCAGCAAGCCCTGCTCTTCTGCCCGCCATGAACACCGCCATGTGGGAGCACCCG
ATCACAGCGCAGCAGGTAGACCAGCTCAAGGCCTTTGGCTATGTCGAGATCCCCTGTGTGGCCAAGAAG
CTGGTGTGCGGAGATGAAGGTCTCGGGCCATGGCTGAAGTGGGGACCATCGTGGACAAAGTAAAAGAA
GTCCTCTTCCAGCACAGTGGCTTCCAGCAGAGT
ACGCGTACGCGGCCGCTCGAG - GFP Tag - GTTTAAAC
```

**Protein Sequence:** >Peptide sequence encoded by RG236262  
Blue=ORF Red=Cloning site Green=Tag(s)

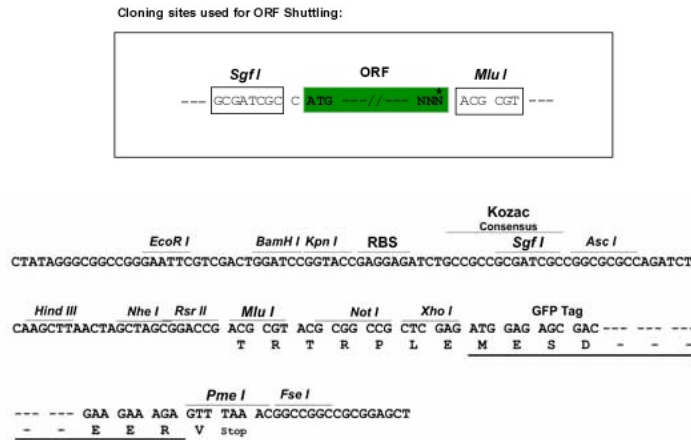
```
MEPKASCPAAPLMERKFHVLVGVGTGSVAALKLPLLVSKLLDIPGIWKSRSDPVLHIDLRRWADLLLVA
PLDANTLGKVASGICDNLLTCVMRAWDRSKPLLFPCAMNTAMWEHPITAQQVDQLKAFGYVEIPCAVK
LVCGDEGLGAMAEVGTIVDKVKEVLFQHSGFQQS
TRTRPLEMESDESGLPAMEIECRITGTLNGVEFELVGGGEGTPEQGRMTNKMSTKGALTFSPYLLSHV
MGYGFYHFGTYPYSGYENPFLHAINNGGYTNTRIEKYEDGGVLVHSFSYRYEAGRVIGDFKVMGTGFPED
SVIFTDKIIRSNATVEHLHPMGDNDLDGSFTRTFSLRDGGYSSVVDSHMHFKSAIHPSILQNGGPMFA
FRRVEEDHSNTELGIVEYQHAFKTPDADAGEERV
```

**Restriction Sites:** SgfI-MluI

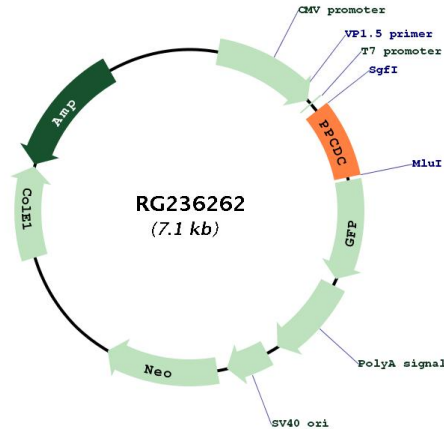


[View online >](#)

Cloning Scheme:



Plasmid Map:



ACCN: NM\_001301102

ORF Size: 516 bp

OTI Disclaimer: The molecular sequence of this clone aligns with the gene accession number as a point of reference only. However, individual transcript sequences of the same gene can differ through naturally occurring variations (e.g. polymorphisms), each with its own valid existence. This clone is substantially in agreement with the reference, but a complete review of all prevailing variants is recommended prior to use. [More info](#)

OTI Annotation: This clone was engineered to express the complete ORF with an expression tag. Expression varies depending on the nature of the gene.

<b>Components:</b>	The ORF clone is ion-exchange column purified and shipped in a 2D barcoded Matrix tube containing 10ug of transfection-ready, dried plasmid DNA (reconstitute with 100 ul of water).
<b>RefSeq:</b>	<a href="#">NM_001301102.2</a>
<b>RefSeq Size:</b>	2172 bp
<b>RefSeq ORF:</b>	519 bp
<b>Locus ID:</b>	60490
<b>UniProt ID:</b>	<a href="#">Q96CD2</a>
<b>Cytogenetics:</b>	15q24.2
<b>Protein Pathways:</b>	Metabolic pathways, Pantothenate and CoA biosynthesis
<b>MW:</b>	19.2 kDa
<b>Gene Summary:</b>	Biosynthesis of coenzyme A (CoA) from pantothenic acid (vitamin B5) is an essential universal pathway in prokaryotes and eukaryotes. PPCDC (EC 4.1.1.36), one of the last enzymes in this pathway, converts phosphopantothenoylcysteine to 4-prime-phosphopantetheine (Daugherty et al., 2002 [PubMed 11923312]).[supplied by OMIM, Mar 2008]