

Product datasheet for **RG236227**

ZCCHC17 (NM_001282572) Human Tagged ORF Clone

Product data:

Product Type: Expression Plasmids
Product Name: ZCCHC17 (NM_001282572) Human Tagged ORF Clone
Tag: TurboGFP
Symbol: ZCCHC17
Synonyms: HSPC251; pNO40; PS1D
Mammalian Cell Selection: Neomycin
Vector: pCMV6-AC-GFP (PS100010)
E. coli Selection: Ampicillin (100 ug/mL)
ORF Nucleotide Sequence: >RG236227 representing NM_001282572.
Blue=ORF Red=Cloning site Green=Tag(s)

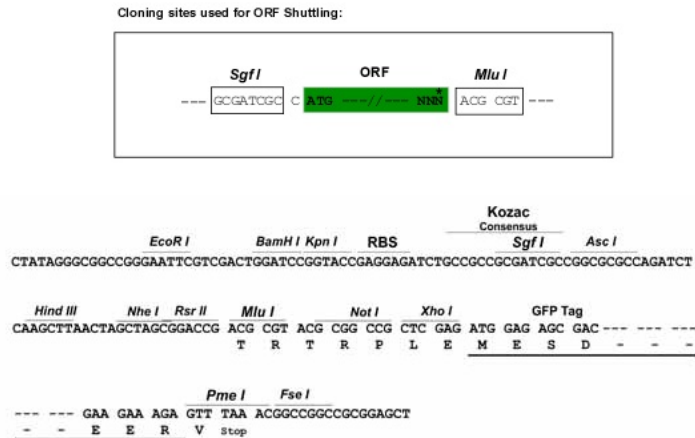
```
GCTCGTTTAGTGAACCGTCAGAATTTGTAAACGACTCACTATAGGGCGCCGGGAATTCGTCGACTG
GATCCGGTACCGAGGAGATCTGCCGCCGCGATCGCC
ATGAATTCAGGAAGCCTGAGACCATGGAAAATTGCCTGCTCTACACTATTTTCCAAGGAGAGGTT
GCTATGGTGACAGACTATGGGCCTTTATCAAAATCCCAGGCTGTCGGAAGCAAGGTCTGGTCCATCGA
ACTCATATGTCATCCTGTCGGGTGGATAAGCCCTCTGAGATAGTAGATGTTGGAGATAAAGTGTGGTG
AAGCTTATTGGCCGAGAGATGAAAATGATAGAATAAAAGTATCCCTCTCCATGAAGTTGTCAATCAA
GGGACTGGGAAAGACCTTGATCCCAACAATGTTATCATTGAGAGAAGAAGAAAAAGAAACATAGAGATA
GGAAGTCATCTGACTCTGACAGCTCAGACTCTGAGAGTGATACAGGCAAGAGGGCAAGGCACACATCAA
AAGACAGCAAGGCAGCAAGAAGAAGAAAAAGAAGAAGCACAAGAAGAGCACAAGGAGTGAGAGT
ATAAAGAGTGTAGGGGTGGT
ACGCGTACGCGGCCGCTCGAG - GFP Tag - GTTTAAAC
```

Protein Sequence: >Peptide sequence encoded by RG236227
Blue=ORF Red=Cloning site Green=Tag(s)

```
MNSGRPETMENLPALYTIQGEVAMVTDYGAFIKIPGCRKQGLVHRTHMSSCRVDKPEIVDVGDKVWV
KLIGREMKNDRIKVSLSMKVNVQGTGKLDLPNNVIERRRKRNIIEIGSHLTLTAQTLRVIQARGQGTQ
KTARQRRRRRRRSTRRSTRSESIKSVGGG
TRTRPLEMESDESGLPAMEIECRITGTLNGVEFELVGGEGTPEQGRMTNKMSTKGALTFSPYLLSHV
MGYGFYHFGTYPSGYENPFLHAINNGGYNTRIEKYEDGGVLHVSFSYRYEAGRVIGDFKVMGTGFPED
SVIFTDKIIRSNATVEHLHPMGDNDLDGSFTRTFSLRDGGYSSVVDSHMHFKSAIHPSILQNGGPMFA
FRRVEEDHSNTELGIVEYQHAFKTPDADAGEERV
```

Restriction Sites: SgfI-MluI



Cloning Scheme:


ACCN: NM_001282572

ORF Size: 504 bp

OTI Disclaimer: The molecular sequence of this clone aligns with the gene accession number as a point of reference only. However, individual transcript sequences of the same gene can differ through naturally occurring variations (e.g. polymorphisms), each with its own valid existence. This clone is substantially in agreement with the reference, but a complete review of all prevailing variants is recommended prior to use. [More info](#)

OTI Annotation: This clone was engineered to express the complete ORF with an expression tag. Expression varies depending on the nature of the gene.

Components: The ORF clone is ion-exchange column purified and shipped in a 2D barcoded Matrix tube containing 10ug of transfection-ready, dried plasmid DNA (reconstitute with 100 ul of water).

RefSeq: [NM_001282572.1](#), [NP_001269501.1](#)

RefSeq Size: 1388 bp

RefSeq ORF: 507 bp

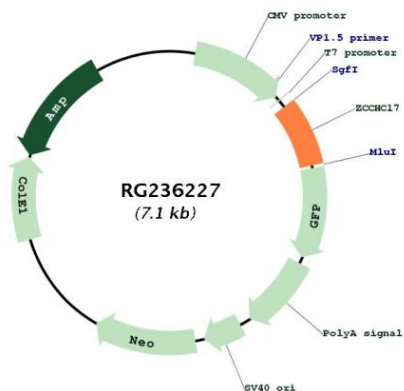
Locus ID: 51538

UniProt ID: [Q9NP64](#)

Cytogenetics: 1p35.2

MW: 19.5 kDa

Product images:



Circular map for RG236227