

## Product datasheet for **RG236226**

### Neuritin (NRN1) (NM\_001278711) Human Tagged ORF Clone

#### Product data:

**Product Type:** Expression Plasmids  
**Product Name:** Neuritin (NRN1) (NM\_001278711) Human Tagged ORF Clone  
**Tag:** TurboGFP  
**Symbol:** Neuritin  
**Synonyms:** dj380B8.2; NRN  
**Mammalian Cell Selection:** Neomycin  
**Vector:** pCMV6-AC-GFP (PS100010)  
**E. coli Selection:** Ampicillin (100 ug/mL)  
**ORF Nucleotide Sequence:** >RG236226 representing NM\_001278711.  
Blue=ORF Red=Cloning site Green=Tag(s)

```
GCTCGTTTAGTGAACCGTCAGAATTTGTAAACGACTACTATAGGGCGCCGGGAATTCGTCGACTG
GATCCGGTACCGAGGAGATCTGCCGCCGCGATCGCC
ATGGCCACAGCCGCGCGCCCGCAGCCTGACCACTCATCATCCGCGCCAGGTCTCAGGACGTCCAGGCTG
CCCTCTTCCAGCGGGGCGGGAGAGGGTGCATCCGAGGGTCTCACTCGGAATACAGAGTCCACGCGTAT
CTGGTGCAGGCCGTGAGAGCAGCGGGCAAGTGCATGCGGTCTTCAAGGGCTTTTCGGACTGTTTGTCTC
AAGCTGGGCGACAGCATGGCCAACACCCGAGGGCTGGACGACAAGACGAACATCAAGACCGTGTGC
ACATACTGGGAGGATTTCCACAGCTGCACGGTACAGCCCTACGGATTGCCAGGAAGGGCGAAAGAT
ATGTGGGATAAACTGAGAAAAGAATCCAAAACCTCAACATCCAAGGCAGCTTATTCGAACCTCTGCGGC
AGCGGCAACGGGGCGGGGGTCCCTGCTCCCGCGTTCCGGTGTCTCTCTCGGCAGCT
TTAGCGACCTGGCTTTTCCTTC
AGCGGACCGACGCGTACGCGGCCGCTCGAG - GFP Tag - GTTTAAAC
```

**Protein Sequence:** >Peptide sequence encoded by RG236226  
Blue=ORF Red=Cloning site Green=Tag(s)

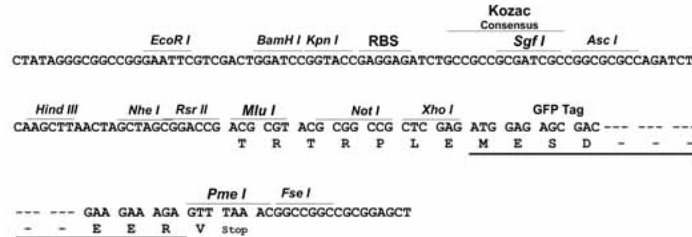
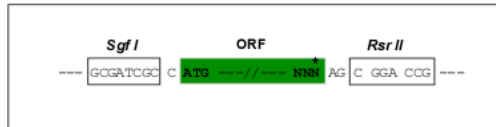
```
MATAARPQPDHSSAPGLRTRSRLPSFQRGGRGCIIRGSHSEYRVHAYLVQAVRAAGKCDVAFKGFSDCLL
KLGDSMANYPQGLDDKTNIKTVCTYWFHSCVTALDTCQEGAKDMWDLRKEKSNLNIQGSFELCG
SGNGAAGSLLPAFPVLLVLSAALATWLSF
SGPTRRTRPLEMESDESGLPAMEIECRITGTLNGVEFELVGGEGTPEQGRMTNKMSTKGALTFSPYLL
SHVMGYGFYHFGTYPSTYENPFLHAINNGGYTNTRIEKYEDGGVLHVFSYRYEAGRVIGDFKVMGTGF
PEDSVIFTDKIIRSNATVEHLHPMGDNDLDGSFTRTFSLRDGGYYSVVDSHMHFKSAIHPSILQNGGP
MFAFRRVEEDHSNTELGIVEYQHAFKTPDADAGEERV
```

**Restriction Sites:** Sgfl-RsrII



**Cloning Scheme:**

Cloning sites used for ORF Shuttling:


**ACCN:** NM\_001278711

**ORF Size:** 504 bp

**OTI Disclaimer:** The molecular sequence of this clone aligns with the gene accession number as a point of reference only. However, individual transcript sequences of the same gene can differ through naturally occurring variations (e.g. polymorphisms), each with its own valid existence. This clone is substantially in agreement with the reference, but a complete review of all prevailing variants is recommended prior to use. [More info](#)
**OTI Annotation:** This clone was engineered to express the complete ORF with an expression tag. Expression varies depending on the nature of the gene.

**Components:** The ORF clone is ion-exchange column purified and shipped in a 2D barcoded Matrix tube containing 10ug of transfection-ready, dried plasmid DNA (reconstitute with 100 ul of water).

**RefSeq:** [NM\\_001278711.1](#), [NP\\_001265640.1](#)
**RefSeq Size:** 1813 bp

**RefSeq ORF:** 507 bp

**Locus ID:** 51299

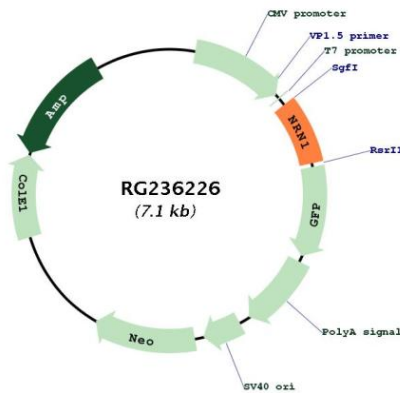
**UniProt ID:** [Q9NPD7](#)
**Cytogenetics:** 6p25.1

**MW:** 18.6 kDa

**Gene Summary:**

This gene encodes a member of the neuritin family, and is expressed in postmitotic-differentiating neurons of the developmental nervous system and neuronal structures associated with plasticity in the adult. The expression of this gene can be induced by neural activity and neurotrophins. The encoded protein contains a consensus cleavage signal found in glycosylphosphatidylinositol (GPI)-anchored proteins. The encoded protein promotes neurite outgrowth and arborization, suggesting its role in promoting neuritogenesis. Overexpression of the encoded protein may be associated with astrocytoma progression. Alternative splicing results in multiple transcript variants. [provided by RefSeq, Jul 2013]

**Product images:**



Circular map for RG236226